



Child Maltreatment: What We're Learning and Where We're Going

Ernestine Briggs-King, PhD
Duke University

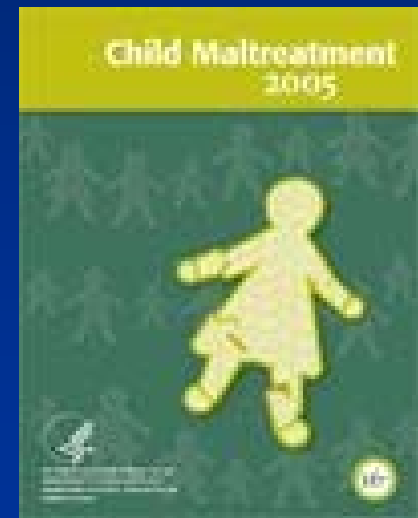
APA Summit on Violence and Abuse in Relationships
February 29, 2008
Washington, DC

What we know....

Prevalence of Child Maltreatment in the General Population

- 3.6 million children received an investigation
- 899,000 children confirmed as abused or neglected
 - 62.8% neglect, 16.6% CPA, 9.3 CSA, 7.1 emotional abuse
- 1460 child fatalities

Source: *Child Maltreatment 2005* (U.S. Department of Health and Human Services, Administration on Children, Youth, and Families, 2007).



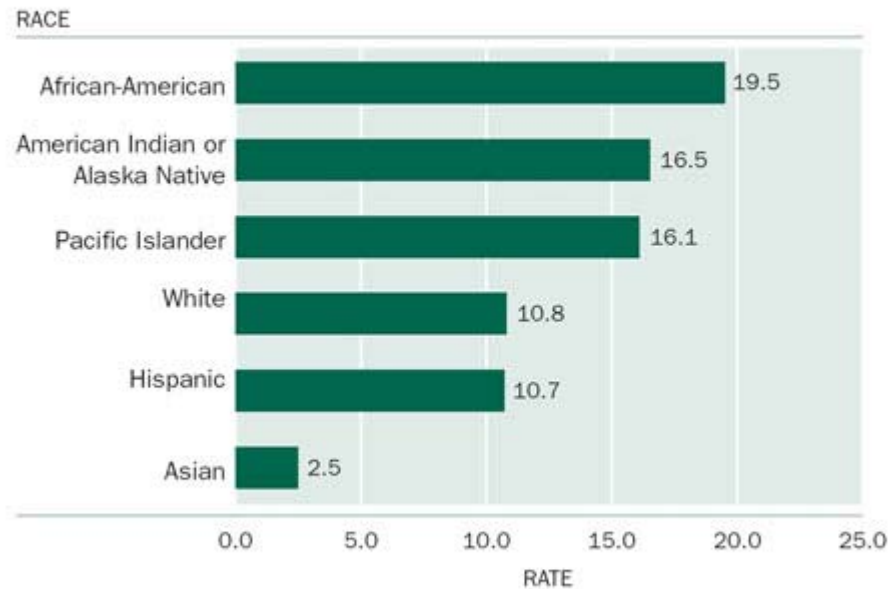
Children of Color in Child Welfare

- Over representation of children of color
- Differential rates of maltreatment substantiation
- ↑ Placement in out of home care (e.g., foster care)
- Longer stays in out of home care
- Fewer opportunities for reunification
- Greater likelihood of multi-system involvement (e.g., foster care, juvenile justice)

Source: *Child Maltreatment 2005* (U.S. Department of Health and Human Services, Administration on Children, Youth, and Families, 2007).

Race and Ethnicity Matter

Figure 3-4 Race and Ethnicity of Victims, 2005



Based on data from table 3-11.

Source: *Child Maltreatment 2005* (U.S. Department of Health and Human Services, Administration on Children, Youth, and Families, 2007).

Children of Color in Child Welfare – Cont.

- Disparities Complicated by:
 - Racial/Ethnic group
 - (AA, PI, AI/AN, E, H/L, AsA 19.9-2.3 per 1,000)
 - Location of study
 - Type of maltreatment
 - Level of aggregation (county, state, or nation)
 - Stage of CW process (report, investigation, substantiation, service determination).

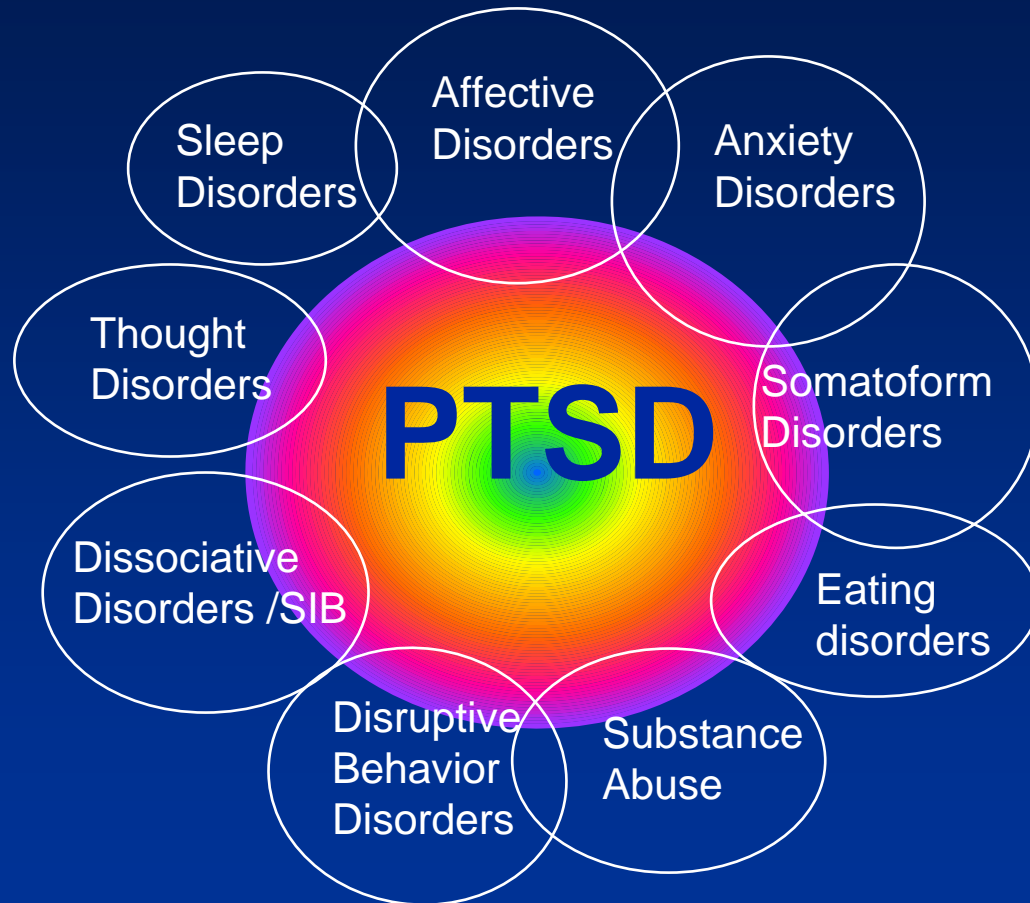


(Carter, 2003)

Potential Consequences of Maltreatment

- Post-traumatic stress, depression, anxiety & other disorders
- Suicide risk
- ↓ capacity to regulate emotion, behavior, & attention
- Impaired social development/interpersonal problems
- Impaired cognitive development: IQ, language
- Poor academic performance
- Substance use/abuse
- Numbness, desensitization to threat
- Subsequent victimization
- Recklessness & reenacting behavior (e.g., risky sex)
- Health problems
- Changes in brain chemistry lead to changes in brain growth and development

Comorbidity



-March & Amaya-Jackson '98

Continuum

Resilience ←————→ Severe Distress

- Nature & severity of symptoms can vary from child to child
 - Asymptomatic
 - Delayed onset of symptoms
 - Moderate distress
 - Major mental health disorders (severe distress)



Continuum

Resilience ←————→ Severe distress

Varies by:

- Type of maltreatment
- Severity
- Chronicity
- Cultural beliefs
- Other experiences
- Timing
- Cumulative risk

Adverse Childhood Experiences Study (ACES)



Felitti et al. 1998;

Costs of Child Maltreatment

- Direct costs (judicial, law enforcement, and health system responses to child maltreatment) are estimated at \$24 billion each year
- Indirect costs (long-term economic consequences of child maltreatment) exceed an estimated \$69 billion annually

Fromm S. Total estimated cost of child abuse and neglect in the United States—statistical evidence. Chicago (IL): Prevent Child Abuse America (PCAA); 2001. [cited 2005 Jan 1]. Available from: URL: www.preventchildabuse.org/learn_more/research_docs/cost_analysis.pdf.

Summary

- Millions of children each year experience maltreatment
- Disparities exist
- Short and long-term consequences
- Importance of resiliency
- Direct & indirect costs



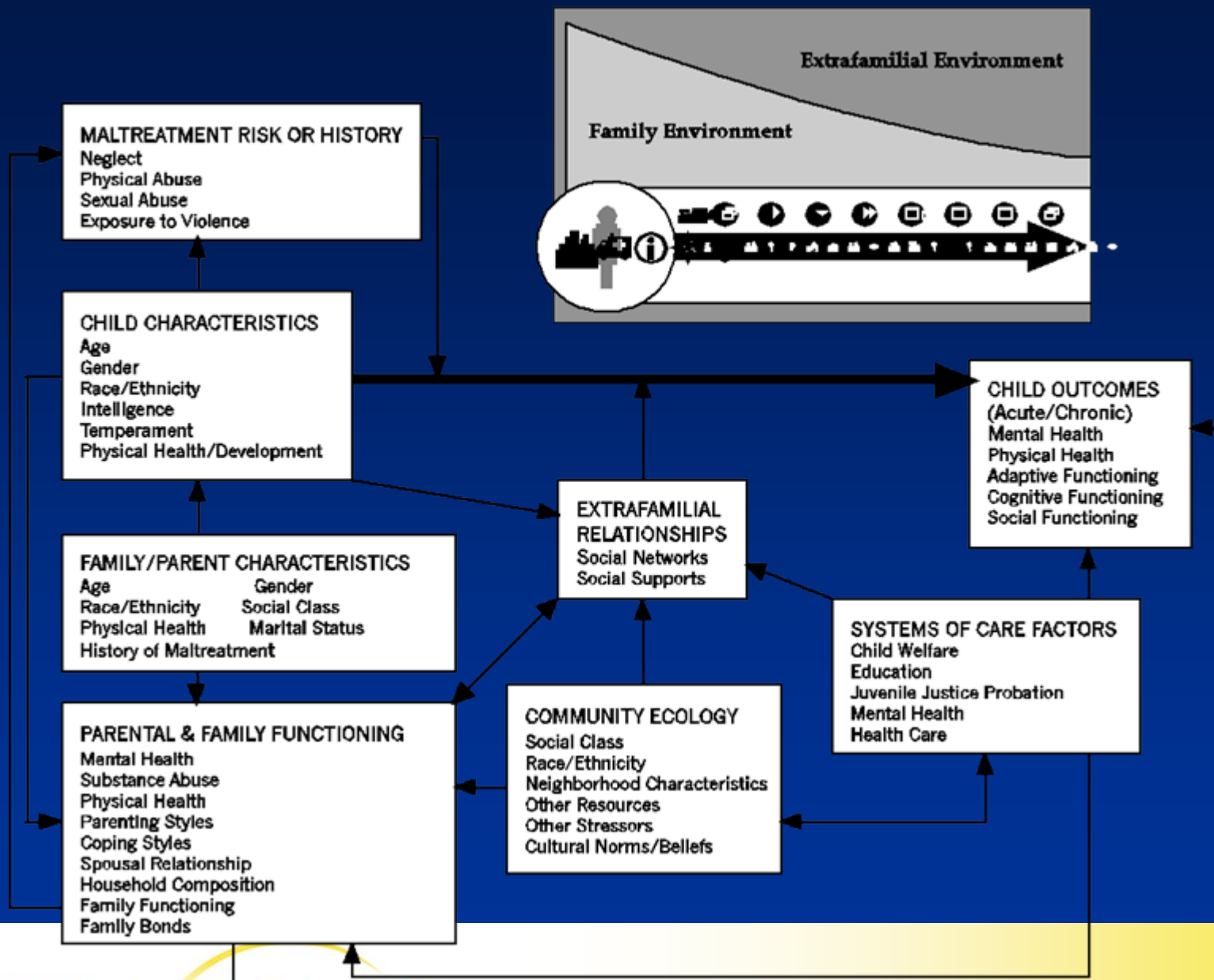
What we don't know...

How do all the pieces fit together?

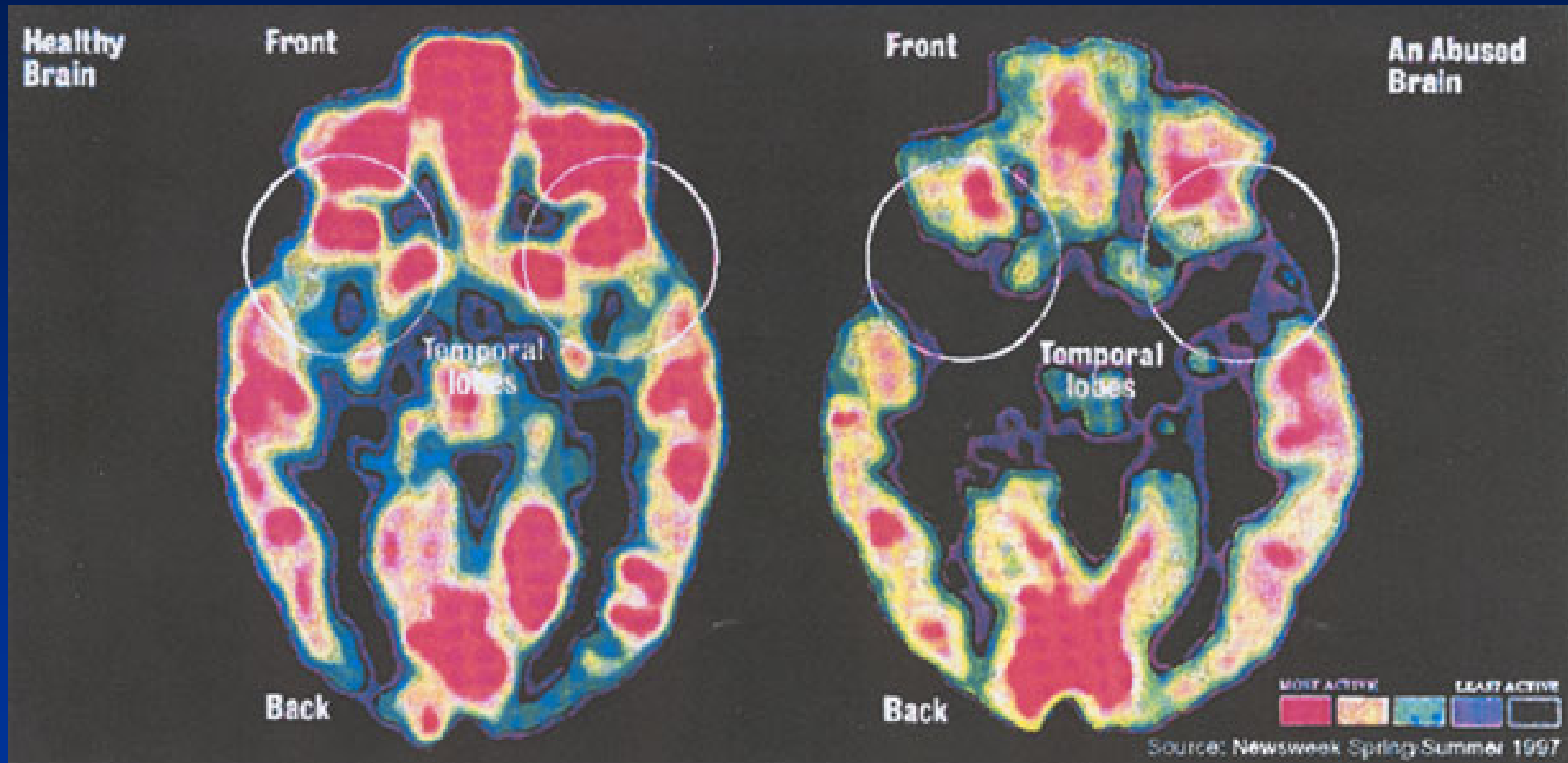
- Racial/ethnic differences
- Gender differences
- Different types of maltreatment
- Other forms of trauma

What we're learning &
where we're going...

LONGSCAN's Ecological - Developmental Conceptual Model

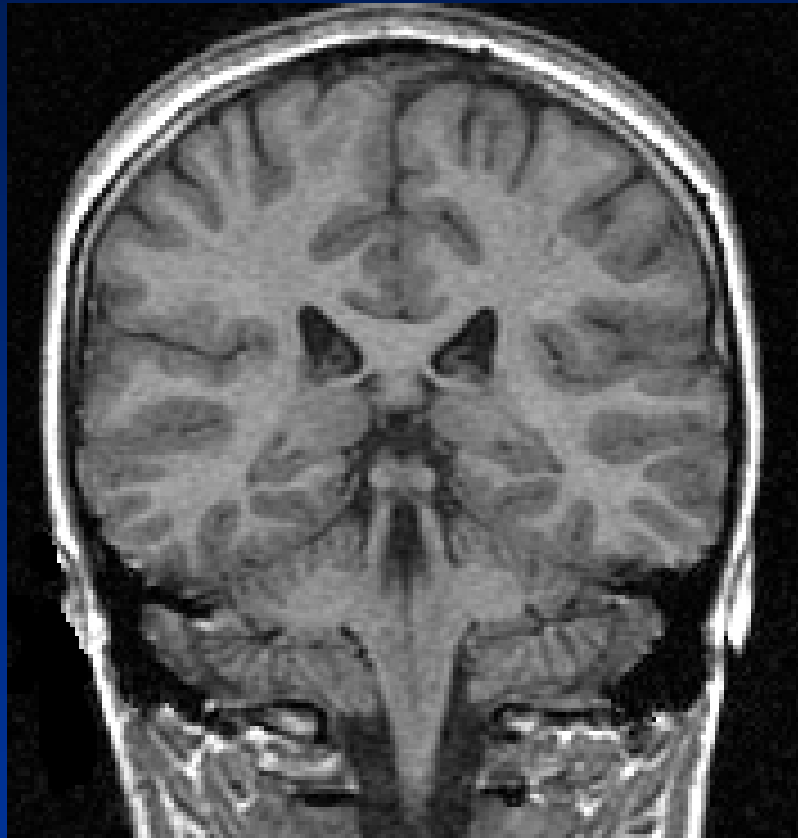


PET Scans of Activation in the Brain

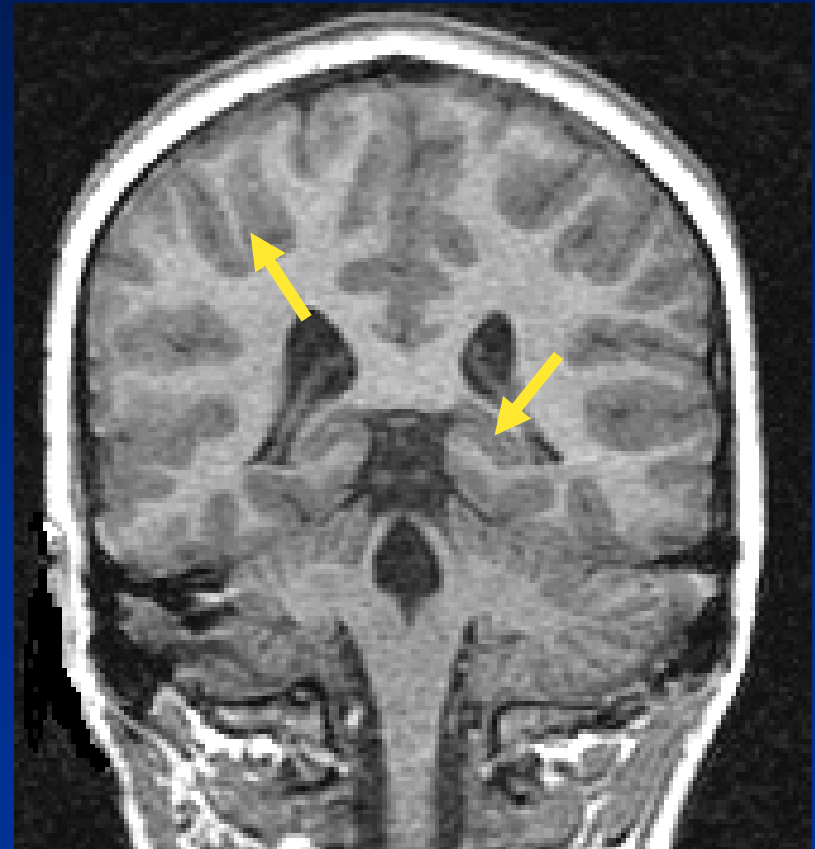


Lateral Ventricles Measures in an 11 Year Old Maltreated Male with Chronic PTSD, Compared with a Healthy, Non-Maltreated Matched Control

Control

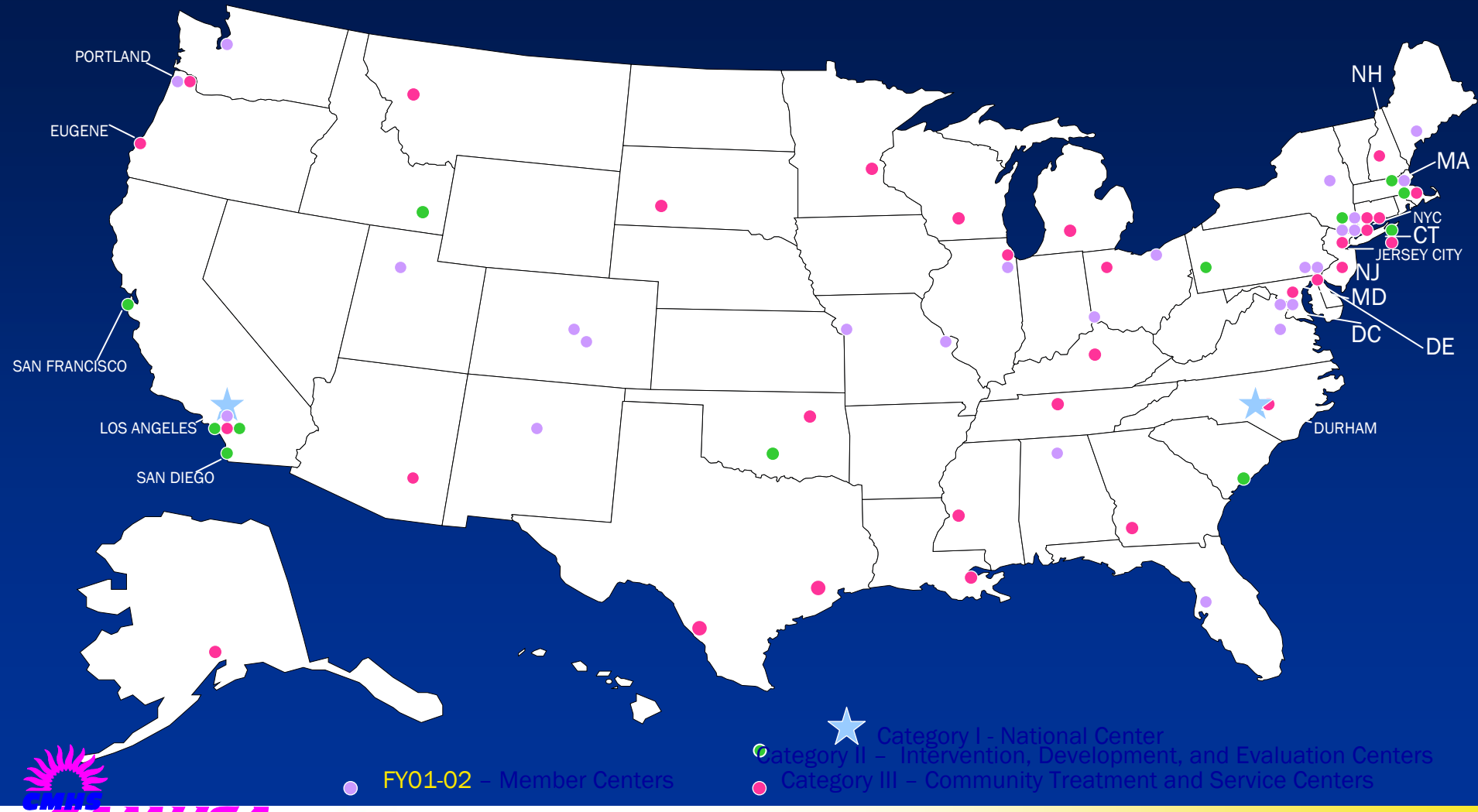


Maltreated



DeBellis et al., Biological Psychiatry (1999)

National Child Traumatic Stress Network Sites



National Child Traumatic Stress Network (NCTSN)

- Established by Congress in 2000, the NCTSN is a unique collaboration of academic and community based service centers whose mission is to increase access to services and the standard of care for traumatized children.
- Combining knowledge & expertise on trauma, culture, & family/consumer perspectives the NCTSN serves as a national resource for disseminating EBT, trauma-informed services, and public and professional education.
- NCTSN 63 centers (43 current grantees, 20 alumni)

Trauma History Timeline: Male Age 18

Age In Years

| Trauma Information | 0 | 1 | 2 | 3 | 4 | 5 | 6 | 7 | 8 | 9 | 10 | 11 | 12 | 13 | 14 | 15 | 16 | 17 | 18 | Unk | |
|--|---|---|---|---|---|---|---|---|---|---|----|----|----|----|----|----|----|----|----|-----|---|
| Sexual Maltreatment/Abuse | | | | | | | | | | | █ | | | | | | | | | | |
| Sexual Assault/Rape | | | | | | | | | | | | | | | | | | | | | |
| Physical Maltreatment/Abuse | | | | | █ | █ | █ | █ | █ | █ | █ | | | | | | | | | | |
| Physical Assault | | | | | | | | | | | | | | | | | | | | | |
| Emotional Abuse/Psychological Maltreatment | | | | | █ | █ | █ | █ | █ | █ | █ | | | | | | | | | | |
| Neglect | | | | | █ | █ | █ | █ | █ | █ | █ | | | | | | | | | | |
| Domestic Violence | | | | | | | | | | | | | | | | | | | | | |
| Kidnapping | | | | | | | | | | | | | | | | | | | | | |
| Trauma Loss or Bereavement | | | | | | | | | | | █ | | | | | | | | | | |
| Forced Displacement | | | | | | | | | | | | | | | | | | | | | █ |
| Impaired Caregiver | █ | █ | █ | █ | █ | █ | █ | █ | █ | █ | █ | | | | | | | | | | |
| Extreme Violence | | | | | | | | | | | | | | | | | | | | | |
| Community Violence | | | | | | | | | | | | | | | | | | | | | |

Kauffman Best Practices Project Final Report



**CLOSING THE QUALITY CHASM IN CHILD ABUSE TREATMENT:
IDENTIFYING AND DISSEMINATING BEST PRACTICES**

*The Findings of the Kauffman Best Practices Project
to Help Children Heal From Child Abuse.*

**Download at
www.chadwickcenter.org**

--Wilson & Saunders, 2005

TF-CBT Web

www.musc.edu/tfcbt

The screenshot shows the website's header with logos for MUSC Medical University of South Carolina, Allegheny General Hospital, LIMDNH SGM CARES INSTITUTE, and NCTSN. Navigation buttons for Register, Login, Introduction, Resources, and Contact Us are visible. The main content area features a large image of a young girl and a list of course topics: Psychoeducation, Stress Management, Affect Expression and Modulation, Cognitive Coping, Creating the Trauma Narrative, Cognitive Processing, Behavior Management Training, Parent-Child Sessions, and Evaluation. At the bottom, there are smaller images of people and the text 'A Strategy to Help' and 'System Requirements | Credits'.

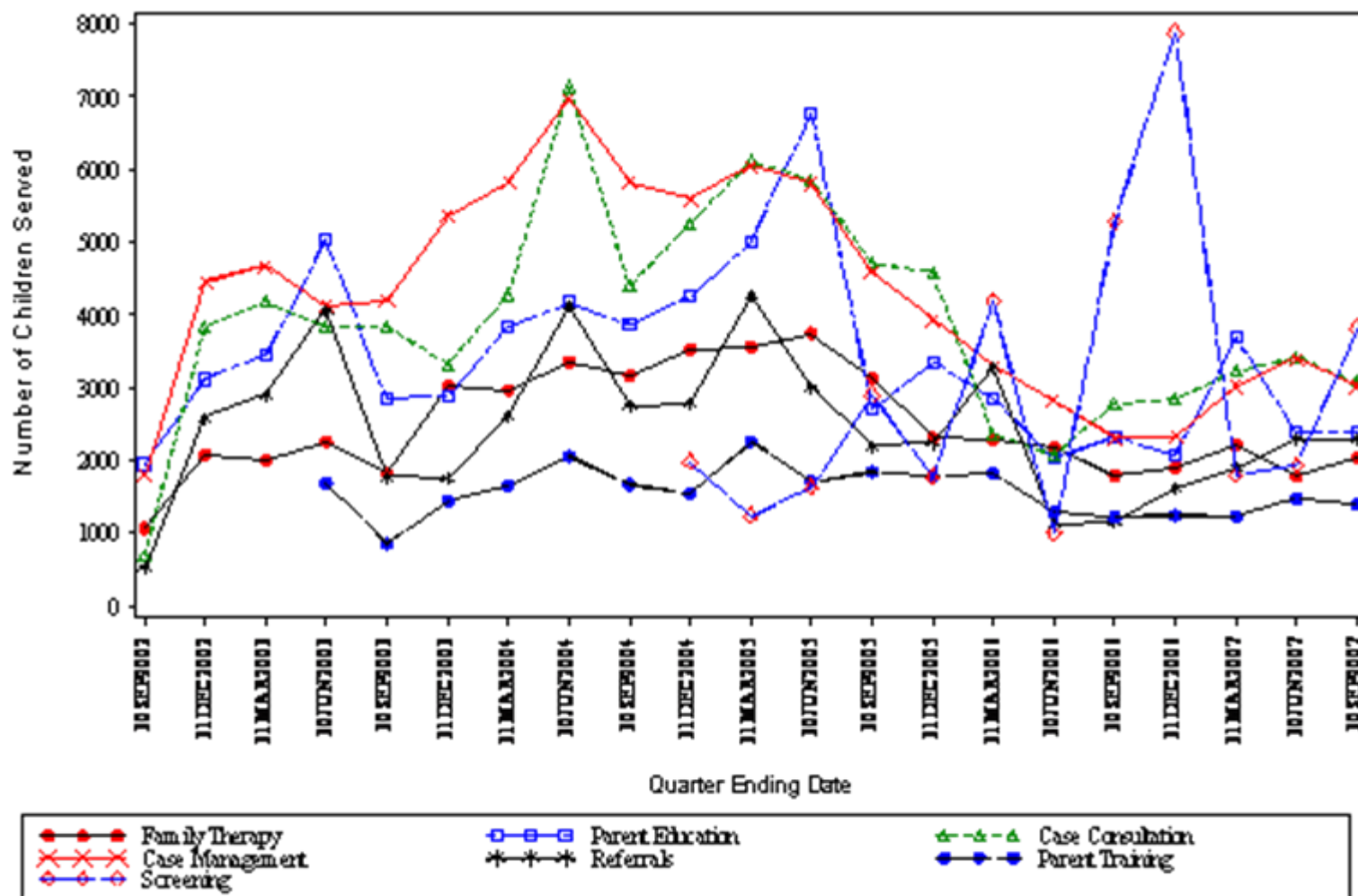
TF-CBT *Web* is an Internet-based, distance education training course for learning Trauma-Focused Cognitive-Behavioral Therapy (TF-CBT).

TF-CBT *Web* is offered free of charge.

Copyright 2005
Medical University of South Carolina
All Rights Reserved

--B.Saunders, 05

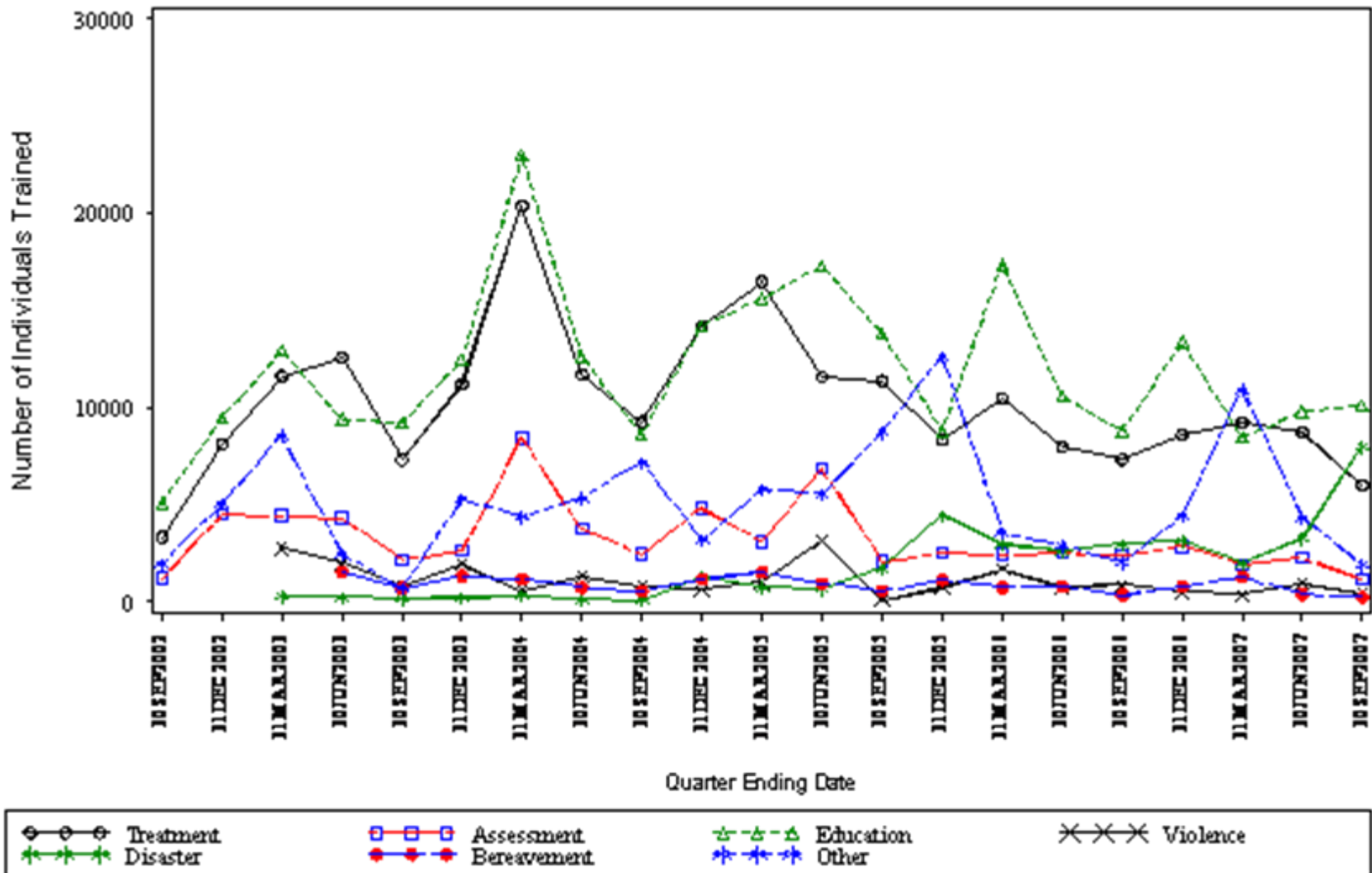
Figure 3. Client Related Services for Children – Category II and III Centers



Parent Training was added to the SUF for the quarter ending 06.30.2003.
 Screening was added to the SUF for the quarter ending 12.31.2004.

Q. Total = 18,038

Figure 4. Number of Individuals Trained – Category I, II and III Centers



Political Violence & Disaster were added to the SUF for the quarter ending 03.31.2003.

Traumatic Bereavement was added to the SUF for the quarter ending 06.30.2003.

Q. Total= 27,877

Summary

- Strategies to examine mediating and moderating effects over time
- Divergent trajectories
- Developmental impact of trauma
- Effective treatment strategies
- Importance of collaboration



Future Directions

- Adapt prevention, intervention, and research efforts to explore the roles of race & gender
- Continue to move toward greater collaboration
- Continue to examine mediators and moderators to explore complex relationships
- Work toward sustaining data collection efforts that will help us to continue to disentangle complex phenomena
- Bridging the gap to bring cutting edge innovations to the communities that need it most