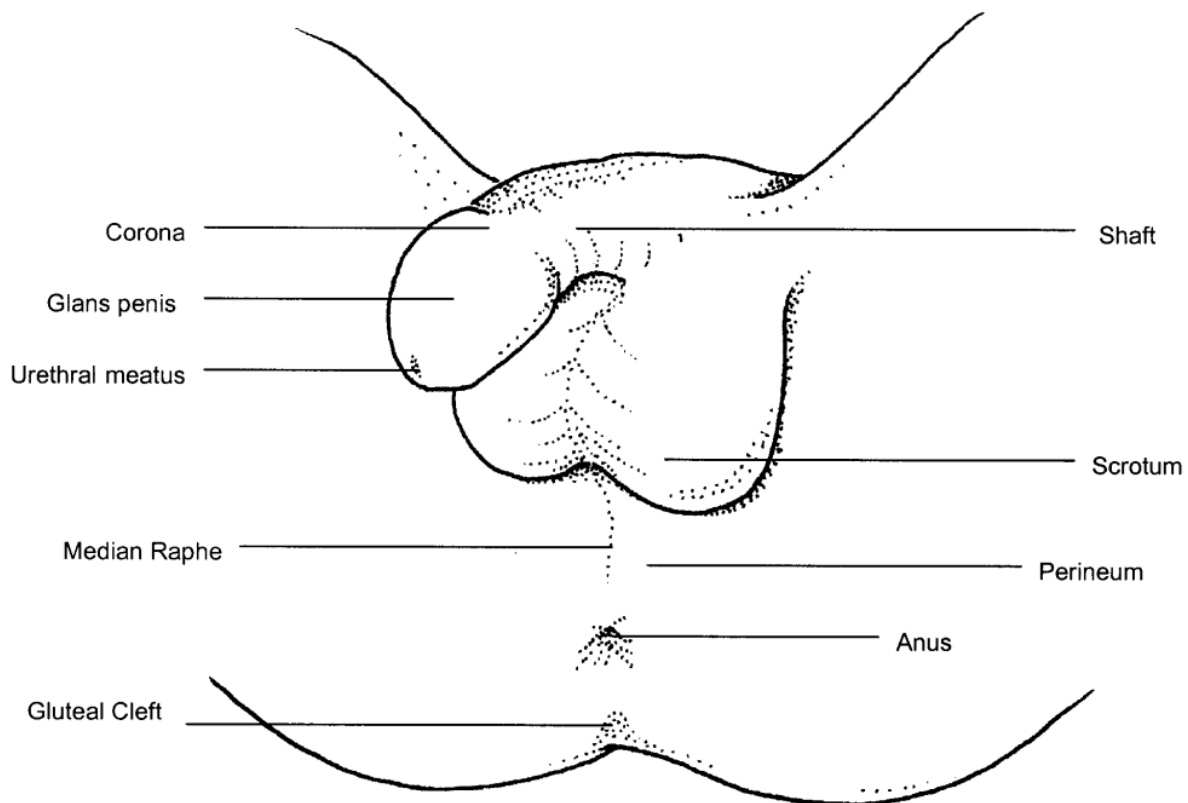


Taken from the National Protocol for Sexual Abuse Medical Forensic Examinations - Pediatric. For the full Pediatric SAFE Protocol, see www.KIDSta.org.

This project was supported by Grant No. 2015-TA-AX-K079 awarded by the Office on Violence Against Women, U.S. Department of Justice. The opinions, findings, conclusions, and recommendations expressed in this Web Site are those of the author(s) and do not necessarily reflect the views of the Department of Justice, Office on Violence Against Women.

Male Genital Anatomy²⁵⁰



²⁵⁰ The illustration is from the California Office of Emergency Services (2001), reprinted with permission.