
SAIOSH A-OSH Expo

Making Fall Protection *Practical*



PROTECTING
PEOPLE AT WORK



South African Institute of
Occupational Safety and Health
Corporate Member

1 - The overlooked STATISTIC

Reality Check



The 'HIDDEN' statistic

Data from FEM Specific too – FALL ONTO DIFFERENT LEVELS FALL ON SAME LEVEL	2015	2025

*data per FEM Statistics

Reality Check



The 'HIDDEN' statistic

Data – FALL ONTO DIFFERENT LEVELS FALL ON SAME LEVEL	2015	2025
Number Of Accidents	1 224	909 (-25%)

*data per FEM Statistics

Reality Check



The 'HIDDEN' statistic

Data – FALL ONTO DIFFERENT LEVELS FALL ON SAME LEVEL	2015	2025
Number Of Accidents	1 224	909 (-25%)
Lost Days		

*data per FEM Statistics

Reality Check



The 'HIDDEN' statistic

Data – FALL ONTO DIFFERENT LEVELS FALL ON SAME LEVEL	2015	2025
Number Of Accidents	1 224	909 (-25%)
Lost Days	10 333	8 073 (-21%)

*data per FEM Statistics

Reality Check



The 'HIDDEN' statistic

Data – FALL ONTO DIFFERENT LEVELS FALL ON SAME LEVEL	2015	2025
Number Of Accidents	1 224	909 (-25%)
Lost Days	10 333	8 073 (-21%)
Fatalities		

*data per FEM Statistics

Reality Check



The 'HIDDEN' statistic

Data – FALL ONTO DIFFERENT LEVELS FALL ON SAME LEVEL	2015	2025
Number Of Accidents	1 224	909 (-25%)
Lost Days	10 333	8 073 (-21%)
Fatalities	10	7 (-30%)

*data per FEM Statistics

Reality Check



The 'HIDDEN' statistic

Data – FALL ONTO DIFFERENT LEVELS FALL ON SAME LEVEL	2015	2025
Number Of Accidents	1 224	909 (-25%)
Lost Days	10 333	8 073 (-21%)
Fatalities	10	7 (-30%)
Permanent Disabilities		

*data per FEM Statistics

Reality Check



The 'HIDDEN' statistic

Data – FALL ONTO DIFFERENT LEVELS FALL ON SAME LEVEL	2015	2025
Number Of Accidents	1 224	909 (-25%)
Lost Days	10 333	8 073 (-21%)
Fatalities	10	7 (-30%)
Permanent Disabilities	123	201 (+63%)

*data per FEM Statistics

Points Covered Today

1. The Fall Protection Plan
2. Uncomfortable Truths
3. Why is the FPP not used properly
4. Points covered in FPP (CR10)
5. What should be understood by Employee?
6. Practical Example – STAGE 1
7. General Critical Failures
8. Final consideration

The Fall Protection Plan

The Fall Protection Plan



Actual Purpose:

Ensure Legislative Compliance (CR10)

Ensure risks are understood for the job carried out

Ensure the team carrying out the job understand them.

What the Plan is really used for:

'Assess' Contractors

Ensure Audits are Passed

Uncomfortable Truths

Uncomfortable Truths



1. How many people performing duties at heights see the Fall Protection Plan?
NEARLY NONE

2. How many of the stats might have gone home safe if they had?
PROBABLY MOST

Why is the FFP not used properly

Why is the FPP not used properly



It is not practical!!



Why is the FFP not used properly



Why?

Why is the FPP not used properly

Why?

1 – **Overly-complicated:** It would take longer to get through the document than complete the job.

Why is the FPP not used properly

Why?

- 1 – **Overly-complicated:** It would take longer to get through the document than complete the job.
- 2 - The persons working at Height are not Work at Heights Specialists. (Boiler Maker, Electrician, Pipe Fitter, Roofer etc).

Points covered in FPP (CR10)

AND What Safety and FPP Developer
should check

Points covered in FPP (CR10)



- **Competent Person Design FPP** (Ladder, Rope Access, Fall Protection etc.)
- **Competent Person Implement FPP**
- **Changes are applied** (Annual, Incident or Scope Change)

- **Instructive Documents**
 - ❖ **Method Statements** (Fall Arrest / Fall Restraint / Dropping Tools etc.)
 - ❖ **Risk Assessments** (Hierarchy of Controls/Remove Risk where Possible)
 - ❖ **Rescue Plan**

Points covered in FPP (CR10)



Heirarchy of Fall Protection



NB!!
Site and Task Specific

Points covered in FPP (CR10)



- Competent Person Design FPP (Ladder, Rope Access, Fall Protection etc.)
- Competent Person Implement FPP
- Changes are applied (Annual, Incident or Scope Change)

- Instructive Documents
 - ❖ Method Statements (Fall Arrest / Fall Restraint / Dropping Tools etc.)
 - ❖ Risk Assessments (Hierarchy of Controls/Remove Risk where Possible)
 - ❖ Rescue Plan

- Employee Capabilities
 - ❖ Fitness to work at Heights
 - ❖ Competence to work at Heights
 - ❖ Appointments

- General
 - ❖ Inspection, Testing and Maintenance of Fall Protection Equipment

What should be understood by
Employee?

What should be understood by Employee?



- ~~Competent Person Design FPP~~ (Ladder, Rope Access, Fall Protection etc.)
- ~~Competent Person Implement FPP~~
- ~~Changes are applied~~ (Annual, Incident or Scope Change)

- Instructive Documents
 - ❖ Method Statements (Fall Arrest / Fall Restraint / Dropping Tools etc.)
 - ❖ Risk Assessments (Hierarchy of Controls/Remove Risk where Possible)
 - ❖ Rescue Plan

- ~~Employee Capabilities~~
 - ❖ ~~Fitness to work at Heights~~
 - ❖ ~~Competence to work at Heights~~
 - ❖ ~~Appointments~~

- General
 - ❖ Inspection, Testing and Maintenance of Fall Protection Equipment

Practical Example – STAGE 1

Working on roofs

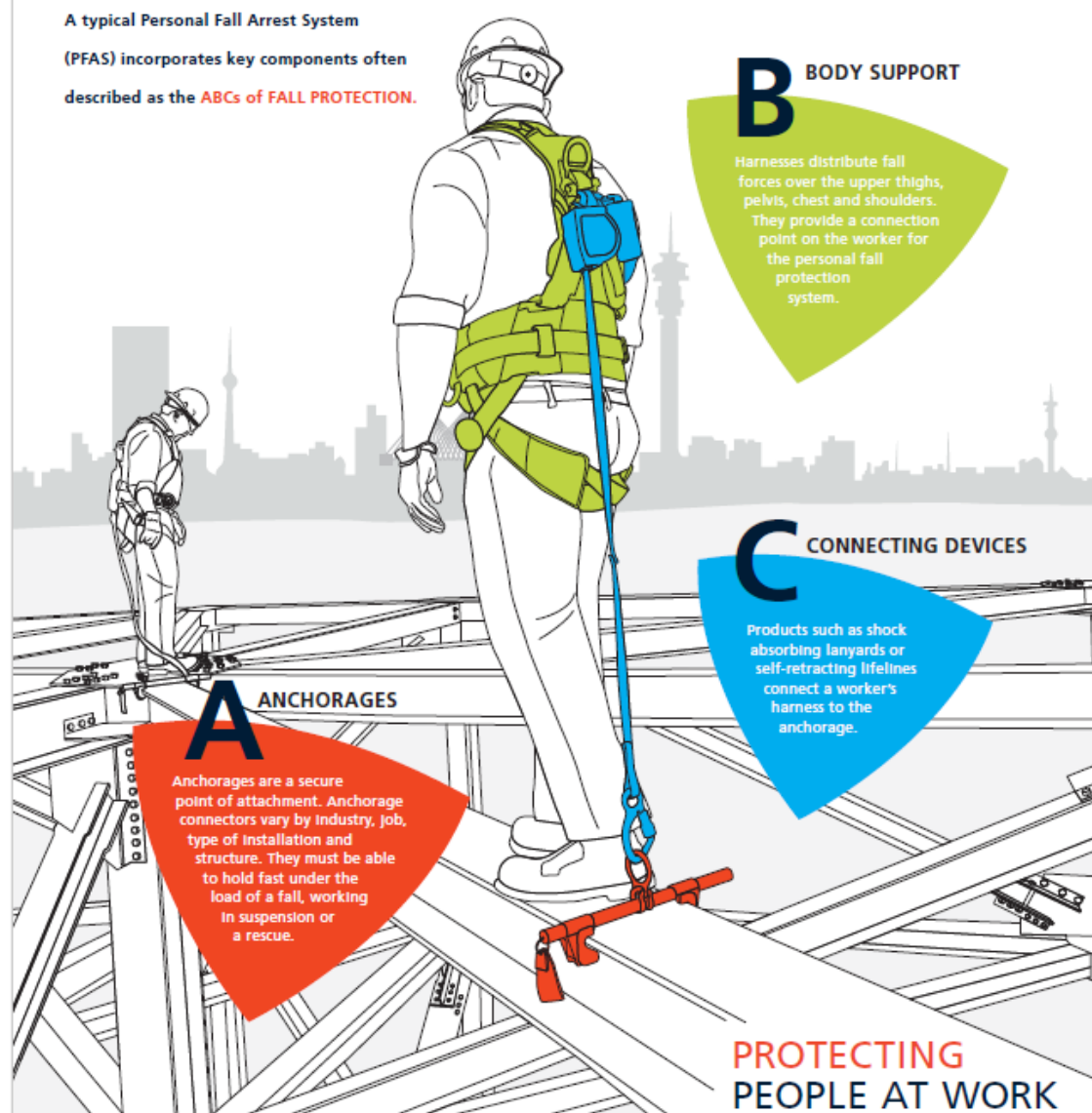
(Largest contributor of WAH Fatalities Globally)

Practical Example



A typical Personal Fall Arrest System

(PFAS) incorporates key components often described as the **ABCs of FALL PROTECTION**.



B BODY SUPPORT

Harnesses distribute fall forces over the upper thighs, pelvis, chest and shoulders. They provide a connection point on the worker for the personal fall protection system.

C CONNECTING DEVICES

Products such as shock absorbing lanyards or self-retracting lifelines connect a worker's harness to the anchorage.

A ANCHORAGES

Anchorages are a secure point of attachment. Anchorage connectors vary by industry, job, type of installation and structure. They must be able to hold fast under the load of a fall, working in suspension or a rescue.

**PROTECTING
PEOPLE AT WORK**

Practical Example



Stage 1: Phase 1

Erecting the Structure



Requested Equipment

A – Anchor Points

EN795 / SANS 50795 - Anchor Point which will not be damaged when used on Steel

B – Body Harness

EN361 / SANS 50361 - 2 Point Harness (Connect at Front and Back)

C – Connecting Device

EN360 - Edge Rated SRL

D – Descent / Rescue

Short/Simple Rescue Based on Connecting Device. No Leverage

A close-up photograph of a traditional lanyard material. The lanyard is made of a dark, braided rope and is attached to a metal shackle. The shackle is mounted on a red metal beam. The background is a blurred green, suggesting an outdoor setting.

**TRADITIONAL
LANYARD MATERIAL**

A close-up photograph of a traditional cable SRL (Self-Retrieving Lifeline) system. A thick, black, braided steel cable is attached to a metal bracket and runs along a red-painted metal beam. The background shows a blurred green tree. The image is split vertically, with the left side showing the physical equipment and the right side being a white background with a grey curved shape at the top.

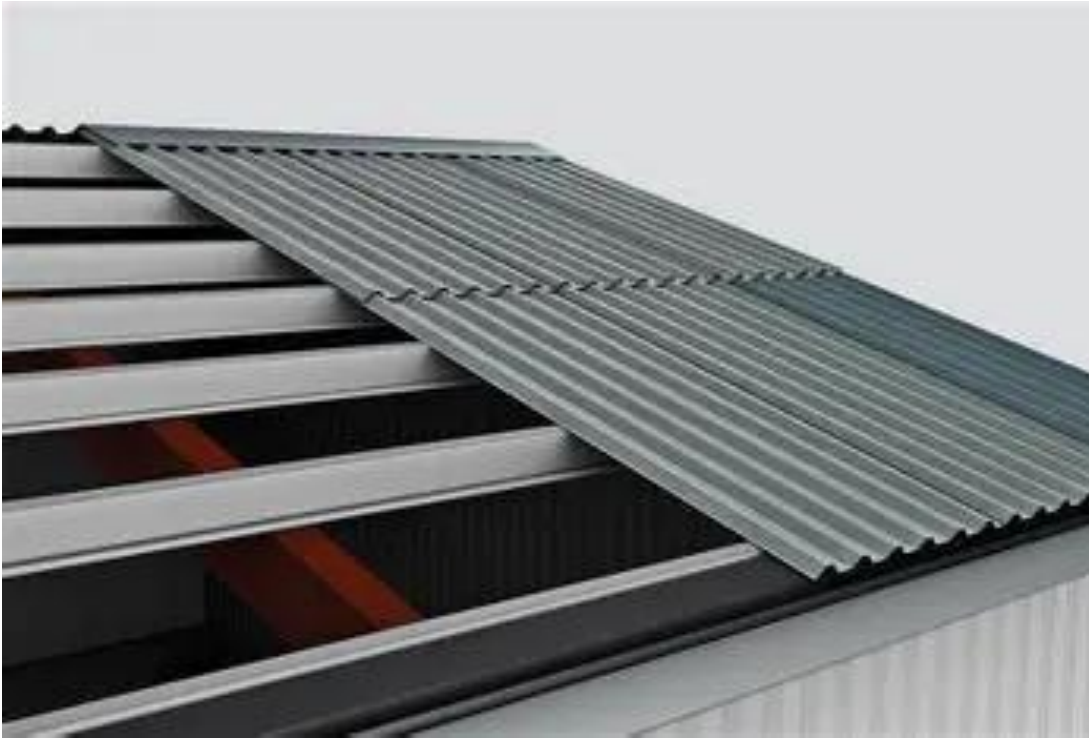
TRADITIONAL CABLE SRL

Practical Example



Stage 1: Phase 2

Installing Roof Sheet



Requested Equipment

A – Anchor Points

EN795 / SANS 50795 - Anchor in Ground / On Sheeting / Temporary Lifeline

B – Body Harness

EN361 / SANS 50361 - 2 Point Harness (Connect at Front and Back)

C – Connecting Device

EN360 - Edge Rated SRL / EN353-2 – Rope Grab (RESTRAINT ONLY)

D – Descent / Rescue

Pickoff Rescue Based on Connecting Device. No Leverage



Roof Anchor Testing -Fall Protection



Watch later



Share



01:00:17:11



0:02 / 1:35



YouTube



General Critical Failures

Critical Failures



Fall Protection Plans

Generic, complex and excessively long

Developed after equipment has been procured

Do not take into consideration evolving projects – Updates should occur:

1. Incident Occurs
2. Change to the structures/surrounding areas
3. Annually

Practicality of Solution

Fatalities and Permanent Disabilities do not happen to people connected

People performing the work are not Work at Heights specialist – their actual job happens to be at heights

Frequency

Reduced concern until it's too late - with falls, frequency is low, severity is high

Closing

Closing



Fall Protection Plans Should

Drive Procurement to ensure appropriate equipment is purchased

Instruct to the correct training required for the job

Assist the person performing the job to safely carry out their duty

Ensure the correct point is being anchored too

Ensure all potential risk variables have been handled prior commencement of work and through site evolution

Fall Protection Plans Should Not

Be Generic

Be overly complicated for the Employee

Be 100+ Pages for a 10 minute job

Only be referred to if there is an Audit or Incident



Presentation by:

Dylan Sutherland

071 533 6492

dylan@protekta.co.za

www.protekta.co.za