

RANI NAIDOO

# RESPIRATORY PROTECTION SPECIALIST



*Dromex*



HELPING TO BRING WORKERS HOME SAFELY

# ABOUT DROMEX

Dromex is Africa's biggest manufacturer and distributor of safety workwear, footwear and PPE with over 10 million items available in stock at any given time, to ensure that we always provide our customers world class service.

## PURPOSE

Dromex exists to champion and protect the hardworking men and women in industry with our complete head-to-toe range of work wear, footwear and PPE.



**Dromex**

# THE DROMEX RANGE

Dromex provides a complete head-to-toe safety solution with a wide range of product offerings across each category:

- Workwear
- Footwear
- Respiratory
- Gloves
- Head and Face Protection
- Eyewear
- Hearing Protection



**Dromex**



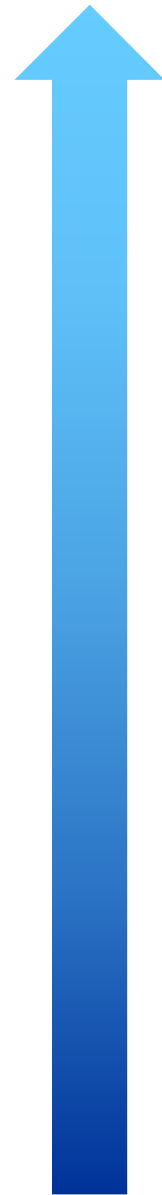
# Hierarchy of controls



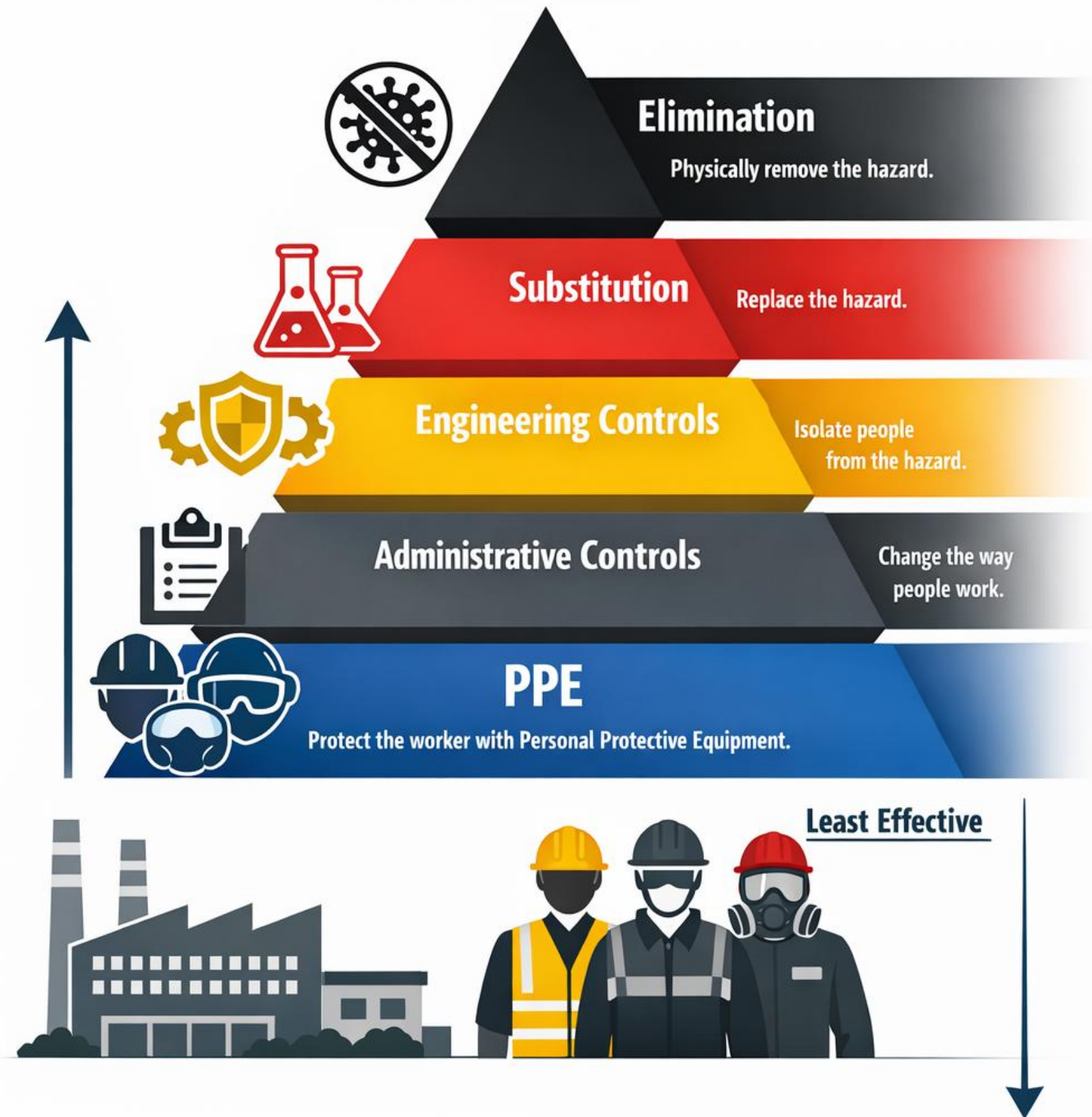
**Dromex**

## Hierarchy of Controls

Most effective



Least effective



Respiratory hazards remain one of the most underestimated risks in the workplace



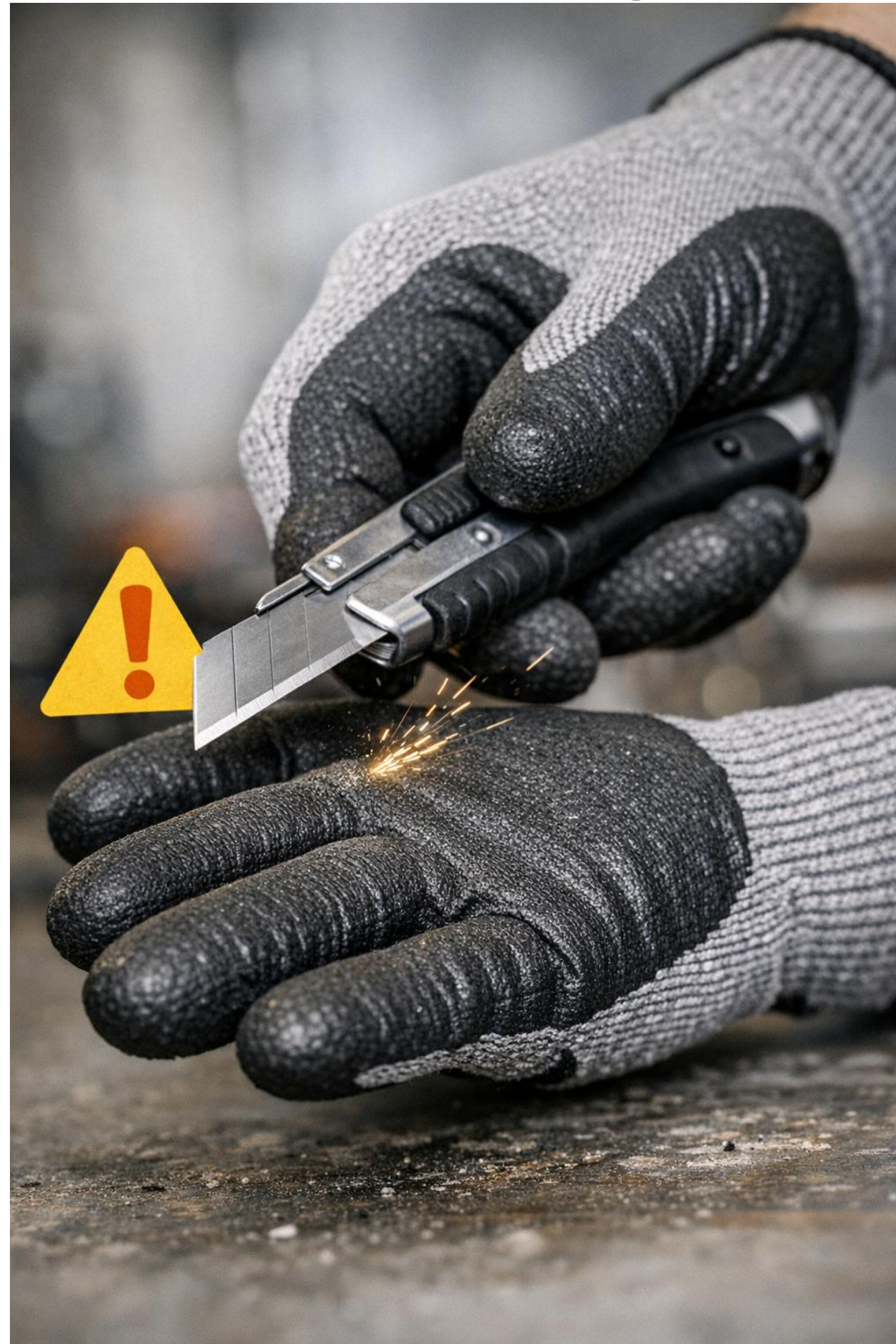
Dromex

**RESPIRATORY PROTECTION**

# Respiratory hazards are hidden dangers



**Dromex**





**Dromex**

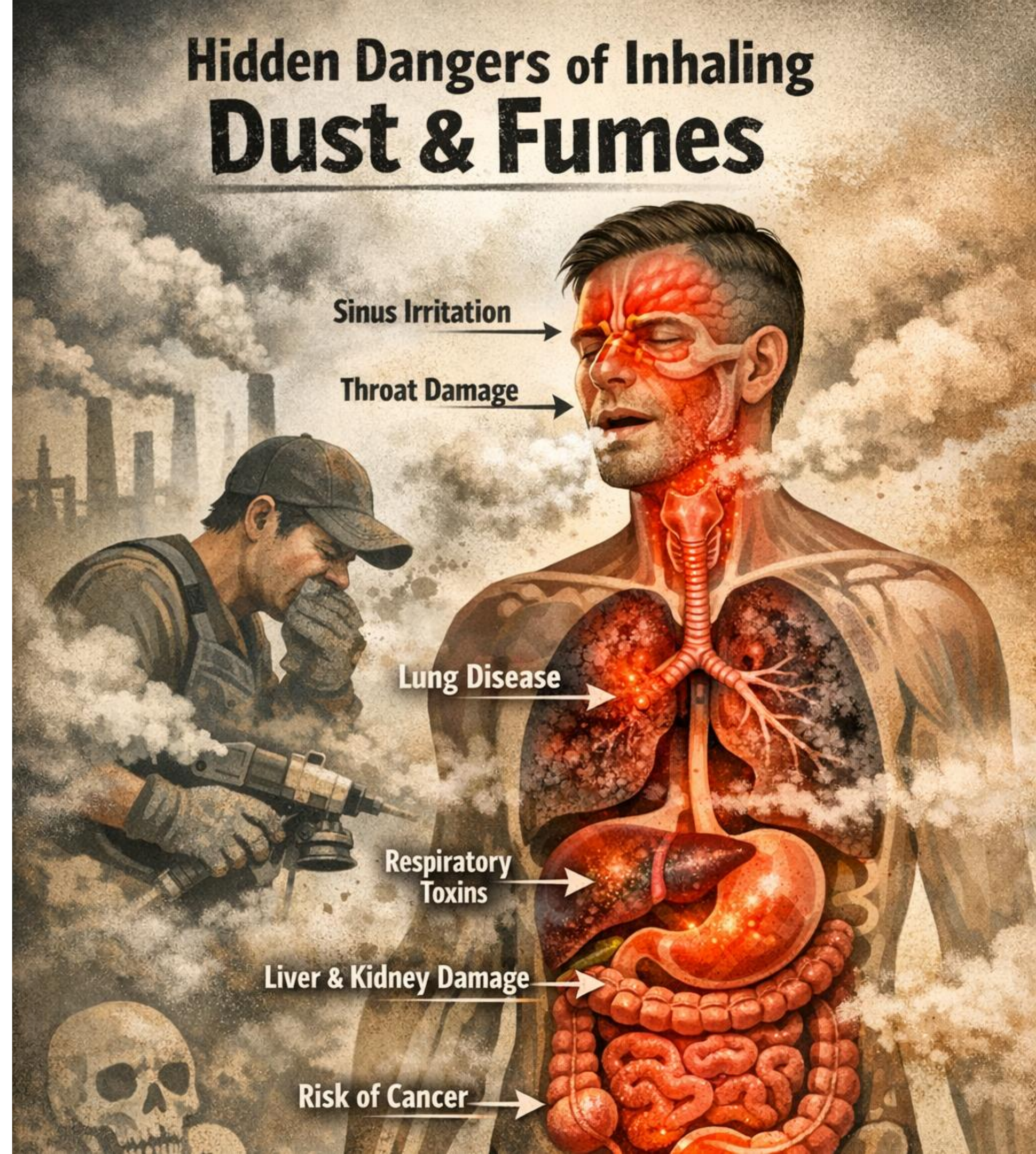


# Why Respiratory Protection Matters

RIMER

# Why is it important

- Respiratory hazards are invisible and delayed, but they are just as dangerous—if not more—than injuries you can see.
- Protecting your lungs today keeps you working and living healthier tomorrow.





# Respiratory protection is designed to Safeguard



**Dromex**

- Safeguarding against hazardous airborne particles
- Preventing occupational diseases
- Providing a controlled barrier in high- risk environments
- Ensuring compliant, standardized protection





**Dromex**

# Occupation: Welder / Grinder

# What Happens When You Inhale Welding Fumes

Exposure to welding fumes can affect lung function and overall health, which may contribute to fatigue and discomfort.

Immediate Effects (Short- Term Exposure)

Long- Term Health Effects



**Dromex**



**Dromex**

## Key effects

Ü Immediate (acute effects)

- ❖ Irritation of nose, throat, and lungs
- ❖ Coughing and shortness of breath
- ❖ Metal fume fever (flu-like symptoms)

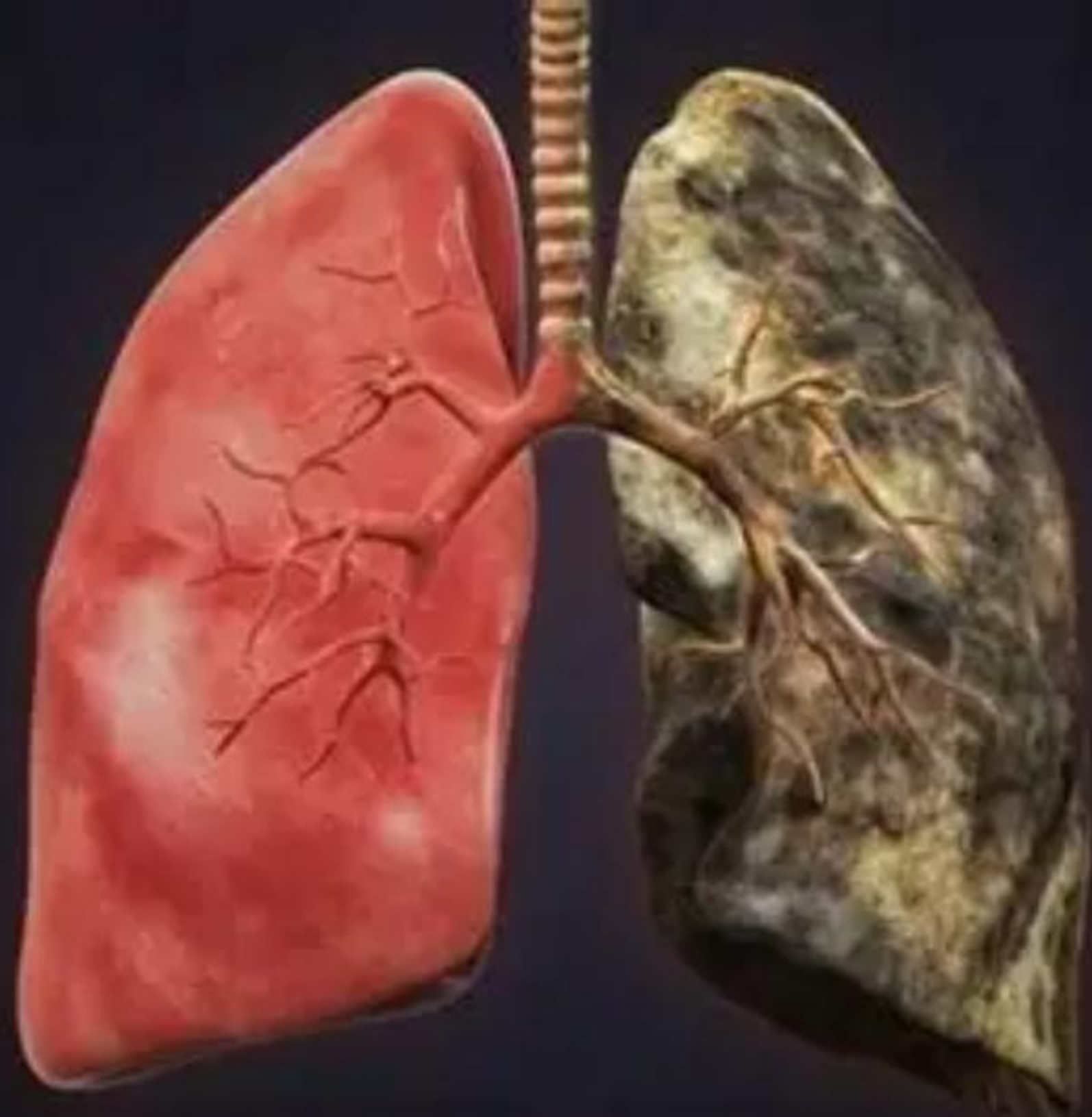
⚠ Long-term (chronic effects)

- ❖ Lung damage (reduced lung function)Occupational asthma
- ❖ Increased risk of cancer (e.g., hexavalent chromium)Neurological effects (e.g., manganese exposure)



**15 grams  
of welding fume  
INHALED PER YEAR**

**=**



**Welders Lung [hot metal work]**

A welder can inhale up to 10–15 grams of welding fume per year.

# The Critical Role of Correct Respirator Selection



**Dromex**

## Why Selection Matters

Choosing the correct respirator is essential because:

- Different hazards require different types of protection
- The wrong filter provides little to no protection
- Respirators are designed for specific contaminants and conditions

What Happens with Incorrect Selection:

- ✗ Exposure to harmful dusts, gases, or vapours
- ✗ False sense of safety
- ✗ Increased risk of occupational disease
- ✗ Potential for serious or irreversible health damage



**A respirator is only as good as its selection — the wrong choice doesn't reduce risk, it creates it**

# Why N95 and KN95 Are **Not Compliant** in South Africa



**Dromex**

## Regulatory Standards Difference

South Africa requires respirators to meet EN149:2001/SANS 50149:2003 standards instead of U.S. or Chinese certifications.

## Local Laboratory Evaluations

South African labs found many KN95 masks fail critical tests like seal checks and filtration efficiency.

## Approved Respirators for Use

Only respirators such as FFP1, FFP2, and FFP3 that meet local standards are permitted for occupational use.



# The KN95 and N95 Are Among the Most Counterfeited Respiratory Products



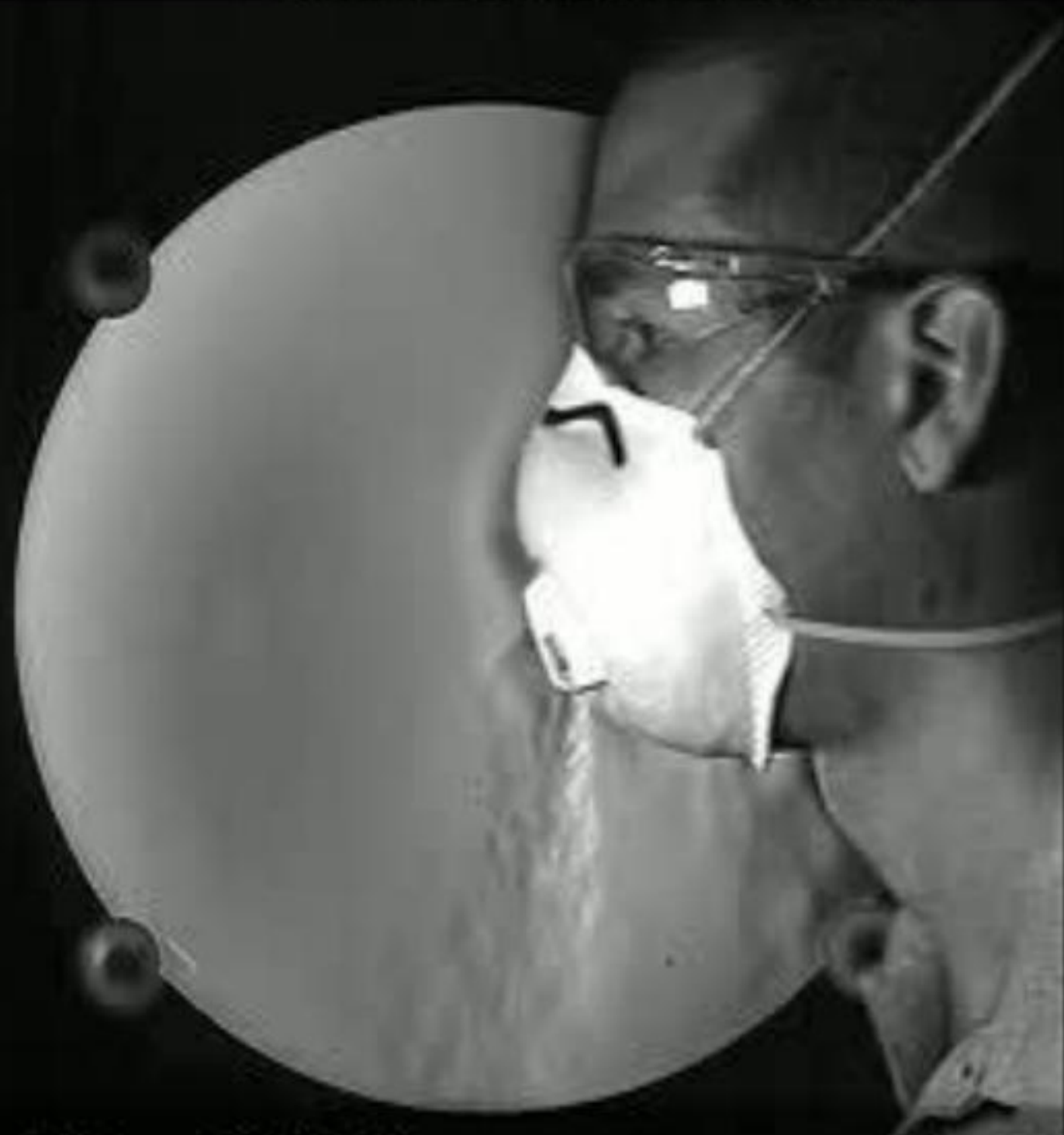


# Respirators – with and without a valve



**Dromex**

Unfiltered breath



Filtered breath



# Respirator Selection – Disposable respirators



**Dromex**



**Cup Shaped**

**vs**



**Flat Fold**

# Cup- Shaped Respirators

1. Fixed Shape Design
2. Variation in Facial Features
3. Limited Size Options
4. Seal Integrity Issues



**Dromex**

**Cup-shaped respirators  
don't fit all face shapes**

# Vertical flat- fold respirators



**Dromex**



→ Leakage Risk on nose bridge

→ Flexible material rather than a rigid cup

→ Breathing resistance: seam can restrict airflow

→ Airflow delay: When the valve is on the side

# Why You Should Use a Facepiece Respirator not a Dust Mask



**Dromex**

1. Better filtration capabilities
2. More comfortable and better fit
3. Durable and quality built
4. Lower breathing resistance
5. Replaceable filters
6. Environmental impact



**CE 2797**  
**EN140:1998**  
NRCS

COMFORTABLE & SOFT  
TPR FACE PIECE

LOW PROFILE FOR ENHANCED  
VISIBILITY DURING USE

HIGH QUALITY  
DURABLE STRAPS

PRESS-RELEASE  
DETACHMENT SYSTEM  
FOR UNIT MAINTENANCE

FOUR EASY-TO-USE  
ADJUSTMENT POINTS

QUICK TWIST FILTER  
APPLICATION

PLEATED FILTERS FOR  
IMPROVED BREATHING  
RESISTANCE

MOULDED ABS YOKE WITH SMART  
DESIGN FOR EXHALATION VALVE  
INSPECTION



**DH-302 HALF MASK**

**AVAILABLE IN THREE  
FACIAL SIZE OPTIONS**

# DH-302 GAS AND VAPOUR CARTRIDGES & Filters



# Risks of Using Cartridges from One Brand on Another Brand's Respirator



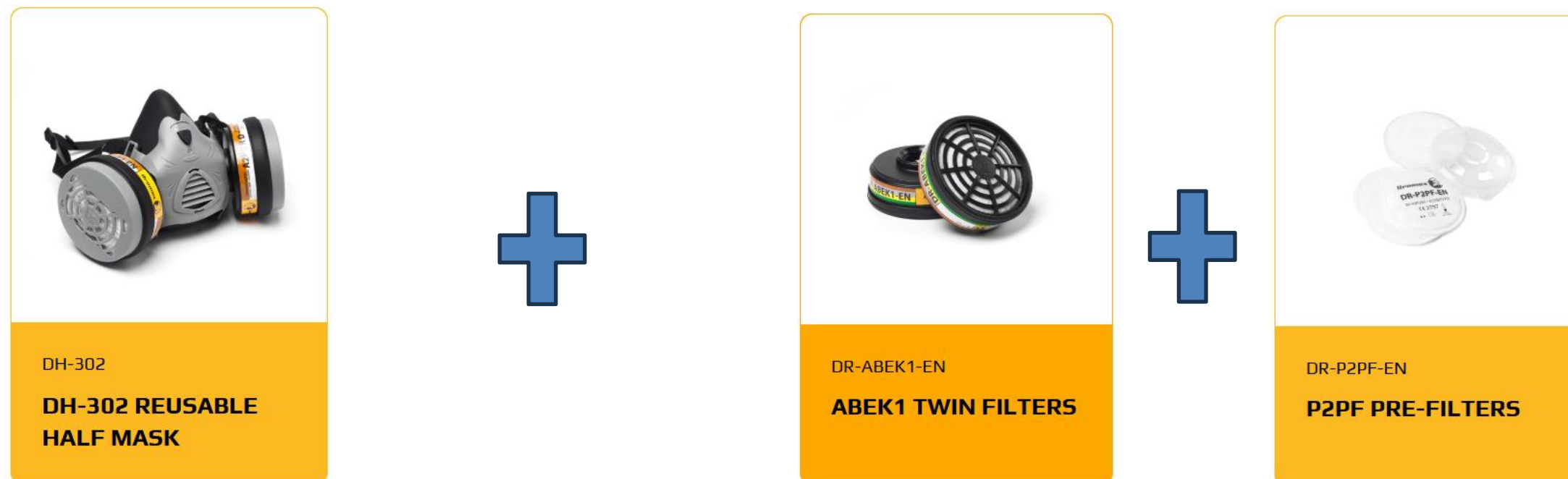
**Dromex**

Using non- Dromex cartridges on a Dromex respirator voids:

1. The EN certification
2. The manufacturer's performance rating
3. Any legal defensibility in the event of an injury claim
4. The warranty of the respirator

**Your respirator and cartridge are designed and tested together.**

If you use a cartridge from another brand, the protection level on the label no longer applies. This means using a competitor cartridge on Dromex masks = non-compliant PPE. This applies to all brands of respirators.



# Limitations



**Dromex**



# 1. Facial Hair (Major Limitation)



**Dromex**



# 2. Wearing makeup



# How NOT to wear your respirator



**Dromex**



Image – AI Generated

# Storage



**Dromex**



**FULL FACE MASK BAG**  
CODE: DH-FFMBAG



**MIDI MASK BAG**  
CODE: DHRB-BLK

## ACCESSORIES

These bags are designed to protect your reusable respiratory Midi-Mask or Full Face Mask & filters while not in use.

They also include a waist strap with quick release buckle so your equipment can be kept on you during the course of your work.

New  
Innovation

# TRANSFORMATIVE VOICE AMPLIFICATION TECHNOLOGY



**Dromex**



**THE NEW** BENCHMARK IN  
RESPIRATORY PROTECTION!

# VOICE AMPLIFICATION RESPIRATOR



Voice Amplification device

Common practice





**Dromex**

# NEW Voice Amplification device

## DH-302 Range





**Dromex**

# THANK YOU

---

We look forward to working with you and your team to help grow your business.



[rani@dromex.co.za](mailto:rani@dromex.co.za)

[www.dromex.co.za](http://www.dromex.co.za)