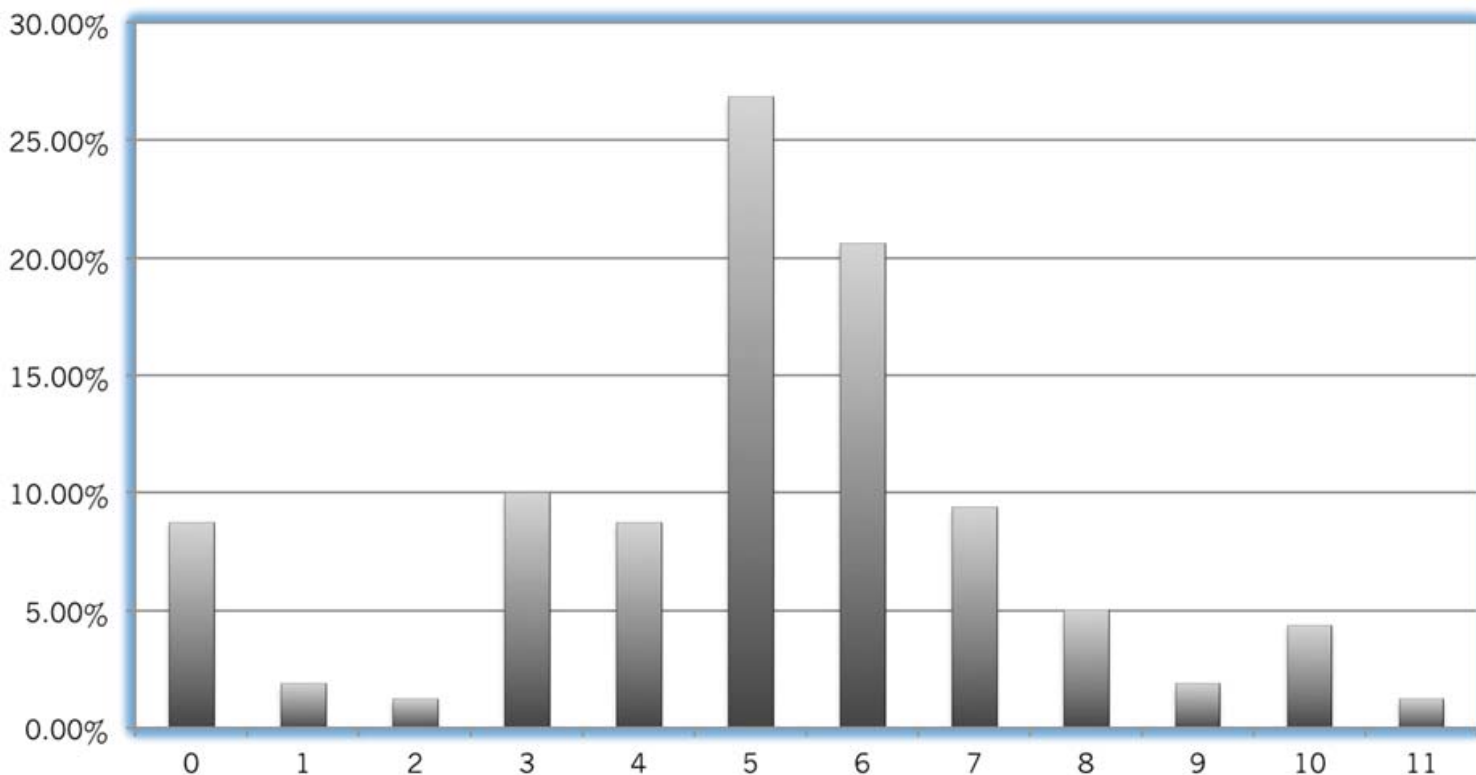


FAST FACTS

SEPTEMBER 2011

“How much is contributed to employee retirement by SAIS member schools?”



How, and how much, to compensate employees is a common issue for independent schools. The data presented in this FAST FACTS may be helpful for a school to strike the necessary balance between providing a competitive compensation package for employees and not over-extending its resources in the effort to be competitive. Thus, what is the typical amount that SAIS independent schools contribute to employee retirement plans? The horizontal (X-axis) indicates the percent of salary an independent school contributes. The vertical (Y-axis) indicates the percentage of SAIS schools that contribute at a particular level. For example, approximately 27% of SAIS schools contribute 5% of an employee’s salary to a retirement account. Approximately, 12% contribute 8% or higher, whereas 9% contribute nothing. Overall, you can see that the average contribution by SAIS schools is between five and six percent. Note, however, that the analysis is based on data collected from 160 (out of 350) SAIS schools that participated in the NAIS StatsOnline data collection in 2010-2011.

Heads and others in the independent school community can use this data to make comparisons to their own situations. Where do you fall?

All good RESEARCH starts with a good QUESTION.



FAST FACTS provides SAIS members with fast, readable, and pertinent information based on the quantitative analysis of one important question.

FAST FACTS encourages members to submit questions for future issues. If you have questions you would like answered via FAST FACTS please send to angela@sais.org.