

Conference Program

XXXIII ANNUAL MEETING
DENVER, USA, MAY 18 - 21,

2017



CLINICAL DECISIONS thAT WORK:

Navigating the Psychotherapy Integration Maze

Dear Colleagues Around the World!

On behalf of the Program Committee, we welcome you to the 33rd annual conference of the Society for the Exploration of Psychotherapy Integration. As an international and interdisciplinary organization of mental health professionals from diverse approaches, SEPI provides a unique opportunity to engage with a wealth of perspectives.

The theme for our 2017 meeting is *Clinical Decisions thAt Work: Navigating the Psychotherapy Integration Maze*. Clinical judgment is what all clinicians face and may well be the ultimate practice-relevant research. Despite the centrality of clinical judgment, however, psychotherapists are less likely than other health care professionals to explicitly frame their work, training, and research in terms of decisions. Decisions themselves do not figure prominently as explanatorily relevant entities in the field of psychotherapy research. Rather, they are the locus of many of the operations, processes, mechanisms and frameworks of interest, not themselves functionally relevant objects. This raises the question of whether the decision itself may operate as an integrated whole and engage its environment causally in ways that require that it be treated also as an object of inquiry!

With a rich array of pre-conference workshops, keynote addresses, mini-workshops, symposia, structured discussions, and a poster session, we hope this program and this conference gives clinicians, researchers and educators, new ways to attend to and improve integrative decision-making processes and products. Only time will tell whether emphasizing the unit of a single clinical decision as an object of attention, will set the stage to new developments in psychotherapy integration practice, research and training.

Meanwhile, our aim is that we all leave Denver enriched with new ideas and with new opportunities for collaboration with members of SEPI community and beyond.

And now, ladies and gentlemen, **a very warm welcome to our joint event!**

Nuno Conceição, Program Chair

PROGRAM COMMITTEE

Nuno Conceição *	PhD, Program Chair, 2017 Conference and SEPI President
Antonio Vasco	PhD, Member of Research Committee
Shigeru Iwakabe	PhD, Member of Education and Training Committee
Ken Critchfield	PhD, Member of Executive Committee
Tracey Martin	PhD, Conference Coordinator and Administrative Officer
Stanley Messer	PhD, 2017 President-Elect
Daniel Fishman	PhD, Future Program Chair
Beatriz Gómez	PhD, Past Program Chair and Past President
Marvin Goldfried	PhD, Chair of Communications & Publications Committee

* with assistance of Alexandre Vaz

kudos to Brad Smith and www.MeetingSavvy.com

LOCAL HOST COMMITTEE

Lynett Henderson Metzger, PsyD
Lavita Nadkarni, PhD
University of Denver

with collaboration of
Susan Heitler, PhD
Rose Medical Center, Denver

SEPI EXECUTIVE COMMITTEE

Nuno Conceição	Ph.D., President
Beatriz Gómez	Ph.D., Past President
Stanley Messer	Ph.D., President-Elect
Catherine F. Eubanks	Ph.D., President-Elect Designate
Kenneth Critchfield	Ph.D., Secretary
Steven A. Sobelman	Ph.D., Treasurer
Tracey Martin	Administrative Officer

SEPI WEBSITE

WWW.SEPIWEB.ORG

CE CREDITS

Continuing Education credits will be available for approved programming at the 2017 SEPI Conference and will be sponsored by the Society for the Advancement of Psychotherapy -Division 29 of the American Psychological Association. The Society for the Advancement of Psychotherapy is approved by the American Psychological Association to offer continuing education for psychologists. The Society for the Advancement of Psychotherapy maintains responsibility for the program. Those presentations that offer CE are noted in the program.

CE Credits are granted to participants with documented attendance at eligible sessions and completed evaluation forms for those sessions. Attendance is monitored. Credit will not be granted to registrants who are more than 15 minutes late, are absent for more than 15 minutes during a session, or those who depart more than 15 minutes early from a session. Credit will not be granted to registrants who do not submit a completed evaluation form at the end of the session. It is the responsibility of registrants to comply with these requirements. It is the responsibility of the attendee to determine whether these CE credits are valid in his/her state of licensure or his/her country.

Attendees who have paid the CE fee will receive a CE passport at the beginning of the conference and must bring it to all attended CE sessions. At the beginning of each session, the attendance monitor for the session must stamp/sign you in. At the end of each session, the monitor must stamp/sign you out. At this time you will also receive an evaluation form that must be completed. These forms can be dropped into the CE feedback dropboxes at registration. At the close of the conference, turn your passport in to a representative of SEPI who is authorized to verify and sign the form. You will receive a receipt for your log and the approximate CE hours it represents. A CE certificate will be emailed to you so ensure that a valid email address is included on the passport.

CE COMPLAINT PROCEDURE

Should you wish to file a formal complaint about the CE process, please visit the Society for the Advancement of Psychotherapy's website: <http://societyforpsychotherapy.org/> for a complete list of instructions. The Society for the Advancement of Psychotherapy -APA Division 29 - is approved by the American Psychological Association to offer continuing education for psychologists. The Society for the Advancement of Psychotherapy - APA Division 29 - maintains responsibility for the program.

kudos to Jack Anchin, PhD., Chair of SEPI Education and Training Committee for handling the whole CE process.

MEETING ACTIVITIES

SEPI Regional Networks Program:

You have the opportunity to meet with Tom Holman at some point during the conference in case you are interested in SEPI regional networking so you can be put in touch with others in your area when you get back home. Chairs of already existing networks will meet on Friday from 12:45 pm to 2:15 pm in the 15/Fifty restaurant.

Research Consultations:

The Research Committee organized research consultations which will be held on Friday from 12:45 pm to 1:45 pm in the Vail and Savoy rooms.

Practice Consultations:

The Practice Advocacy Committee organized sessions which will be held on Friday from 9:45 am to 11:00 am in Room Savoy and from 3:35 pm to 4:50 pm in Room Terrace.

Meet with the Editors:

The Communications and Publications Committee organized a meeting with the editors of the Journal of the Psychotherapy Integration, and the Newsletter of The Integrative Therapist. This will be an opportunity to share the news of SEPI's publications. This meeting will be held on Friday from 12:45 pm to 1:45 pm in the Majestic Ballroom.

Saturday Night Gala!

Come join us at this special location for an evening of fun with your friends and colleagues. Buy your ticket (75\$) in advance through the website or at the conference reception. May 20, 2017, at 7:30 pm, at Tamayo Restaurant, Rooftop Patio, 1400 Larimer St., Denver, Colorado. You will stay a bit poorer but richer in memories to (re)consolidate!

Tamayo's rooftop patio offers spectacular views of the sunset over the Rockies and the Denver skyline. At Tamayo, Chef Richard Sandoval offers his signature blend of authentic Mexican ingredients and innovative culinary techniques. Handcrafted margaritas and a selection of over 100 tequilas pair beautifully with the flavorful dishes. Savor Tamayo's acclaimed cuisine on the outdoor terrace with sweeping views of the Rocky Mountains, or in the main and private dining rooms, where handmade Mexican artwork completes Tamayo's dining experience.

Thursday, 18 May

Pre-Conference Workshop

Organizers: SueAnne V. Piliero,
Karen Pando-Mars, AEDP
Institute

CE

Thursday | 9:00 AM —12:00 PM | Capitol

**AEDP: A model of systematic interventions that harness
the core biological self to deepen and stabilize change**

Pre-Conference Workshop

Organizer: Lorna Smith
Benjamin, University of Utah

CE

Thursday | 2:00 PM —5:00 PM | Capitol

**Interpersonal Reconstructive Therapy (IRT) helps
decide what to do for whom, when and how**

FRIDAY MORNING, MAY 19

	Majestic Ballroom	Columbine	Vail	Terrace	Savoy	Capitol
8:30-9:40	<p>Welcome and Opening Plenary</p> <p>Integrative Themes in Psychotherapy: Searching for Universal Principles to Guide our Clinical Work</p> <p><i>Marvin Goldfried (CE)</i></p>					
9:45-11:00	<p>Applying Unified Metatheories of Psychotherapy to Training Integrative Decision-Making Skills</p> <p><i>Marquis (CE)</i></p>	<p>Finding your footing: Re-conceptualizing therapist factors through a culturally-competent framework</p> <p><i>Bowen</i></p>	<p>Choice point or convergence? Exploring transformative emotional processes and spiritual experiences.</p> <p><i>Gleiser</i></p>	<p>Navigating the road to emotional and sexual intimacy in couples treatment: Emotionally Focused Therapy</p> <p><i>Simakhodskaya (CE)</i></p>	<p>Practice consultation: MOTR - An integrative approach to individualised therapy relations</p> <p><i>Caspar</i></p>	<p>Integrating Emotional Arousal Techniques</p> <p><i>Schoenholtz-Read (CE)</i></p>
11:00-11:30	<p>Coffee break</p>					
11:30-12:45	<p>To Err is Human; To learn from Mistakes... Senior Psychotherapists Describe Therapeutic Errors and Recovery</p> <p><i>Shapiro (CE)</i></p>	<p>Culturally Relevant Clinical Decision-Making</p> <p><i>Ibrahim (CE)</i></p>	<p>Beyond the Words: How non-verbal interplay can assist you in decision making</p> <p><i>Osborn (CE)</i></p>	<p>Using a Unified Framework to Guide Clinical Decision Making through Case Formulation and Treatment Planning</p> <p><i>Harris (CE)</i></p>	<p>Collapsing the Mind-Body Split: Clinical Approaches</p> <p><i>Duckham (CE)</i></p>	<p>Abuse/Attachment and Interpersonal Relationships: Strategies of Disconnection</p> <p><i>Farrell</i></p>
12:45-2:15	<p>Lunch on your own</p>					
12:45-1:45	<p>Research Consultations (Vail and Savoy)+ Meet with JPI & Newsletter Editors (Majestic Ballroom)</p>					

FRIDAY AFTERNOON, MAY 19

	Majestic Ballroom	Columbine	Vail	Terrace	Savoy	Capitol
2:15-3:30	Interpersonal factors in psychotherapy <i>Kramer</i>	Clinical Decision Making: Developmental, Disorder and Disability Cultures <i>Holman (CE)</i>	What is essential to Therapeutic Change? How can research hypotheses be tested in live sessions? <i>Pando-Mars (CE)</i>	You can't hurry love: Choice points in treatment for sexual avoidance <i>Bresler</i>	Trauma in Special Populations <i>Mazary (CE)</i>	The Attachment Beliefs and Behaviors Scale: A new resource for understanding clients' close relationships <i>Liese (CE)</i>
3:35-4:50	Therapist Effects <i>Boswell (CE)</i>	Assimilative Integration of Neurobiologically Informed Concepts for the Treatment of Traumatic Stress <i>Curry (CE)</i>	Bringing the Body and Mind in Psychotherapy <i>Stabb</i>	Practice consultation: Live Session with <i>Marvin Goldfried</i>	Choices for Professional and Personal Development <i>Gori</i>	Integrative Psychotherapy Training in Turkey <i>Ozakkas (CE)</i>
4:50-5:20	Coffee break					
5:20-6:35	When to lead and when to follow in AEDP and EFT <i>Iwakabe (CE)</i>	Three tales of complex PTSD: Clinical decision making in action <i>Davidtz</i>	The Therapeutic Palette: an Innovative Approach to Decision-Making in Couple Therapy <i>Fraenkel</i>	From Two Person to Group Based Psychotherapy Integration <i>Compare</i>	Psychotherapy Integration in Psychoanalysis and Spirituality <i>Bachelart</i>	Unified Psychotherapy for Victims of Intimate Partner Violence <i>Pyland (CE)</i>
6:40-7:15	Awards Ceremony (Majestic Ballroom)					
7:00-9:00	Poster Session and Welcome Reception (15 Fifty Restaurant)					

SATURDAY MORNING, MAY 20

	Majestic Ballroom	Columbine	Vail	Terrace	Savoy	Capitol
8:30-9:55	Clinical Decision Making in Two Integrative Humanistic- Experiential Psychotherapies: Comparisons and Contrasts <i>Bohart (CE)</i>	Comparing and Contrasting Decision-Making by Experienced and Novice Integrative Psychotherapists <i>Anchin (CE)</i>	Patient, Therapist and Common Factors <i>Heinonen</i>	Open Your Heart in the Face of Self-Destructive Behaviors: Using Affect Phobia Therapy... <i>Osborn (CE)</i>	Case Studies and General Clinical Approach and Cultural Differences in Turkey <i>Ozakkas (CE)</i>	Autistic Children Inspire and Require Integration... <i>Holman (CE)</i>
10:00-11:15	A Mixed-Methods Approach to RCTs and Case Study Knowledge <i>Fishman (CE)</i>	New Directions for Integration Research <i>Callahan (CE)</i>	The Heart of Couple Therapy: Finding Strengths and Keeping on Focus <i>E. Wachtel</i>	The Well-Being Checkup System <i>Henriques</i>	Training Supervision, Consultation and Mentoring <i>Florence</i>	Three Depression Treatments in Search of a Researcher <i>Heitler</i>
11:15-11:45	Coffee break					
11:45-1:00	Training Clinical Judgment Using Streaming Psychotherapy Videos: APA PsycTHERAPY <i>Meidenbauer</i>	Psychotherapeutic Treatment of Chronic Pain by Enhancing Emotional Awareness <i>Lane (CE)</i>	Recognizing and Responding to Markers for Building Self-Compassion in our (AEDP) Clients <i>Edlin</i>	The Phenomenology, Diagnosis and Treatment of The Borderline PD: The Masterson Approach <i>Pearson</i>	Psychotherapy Integration: Dynamical Systems Approach as a Meta-Framework <i>Shapiro (CE)</i>	Different Psychotherapy Technics in Clinical Practice <i>Ozakkas (CE)</i>
1:00-2:30	Lunch on your own					

SATURDAY AFTERNOON, MAY 20

Majestic Ballroom Columbine Vail Terrace Savoy Capitol

2:30-3:25	Sifting and winnowing through effective approaches to maximize outcome for each individual <i>Lorna Smith Benjamin (CE)</i>					
3:30-4:45	Are We There Yet? Seeking Theoretical Convergence <i>Smith (CE)</i>	When aggression and culture intersect: the challenge of talking therapeutically about race <i>Davidtz</i>	Facilitating both emotional and relational change: AEDP distinctive and integrable principles <i>Conceição (CE)</i>	Diagnosis and Treatment of Narcissistic PD: The Masterson Approach <i>Bankston</i>	Having the Body and Spirit in Mind <i>Jarry (CE)</i>	Utilizing the Conflict Analysis Battery, an online didactic, diagnostic and integrative therapeutic self-assessment <i>ALewis</i>
4:45-5:15	Coffee break					
5:15-6:30	Promoting Acceptance and Assimilation of Warded Off Parts of Self and Experience <i>Paul Wachtel (CE)</i>					
7:30-	Gala Dinner at Tamayo. Tickets required.					

SUNDAY MORNING, MAY 21

	Majestic Ballroom	Columbine	Vail	Terrace	Savoy	Capitol
8:30-9:45		Cognitive-Behavioral-Expectant Therapy: Variation on a Theme <i>Boyd (CE)</i>	The Decision to Follow a Dream: An Intuitive DEFT Approach with Video Analysis <i>Warshaw</i>	Authenticity Therapy: A New Unifying Framework for the Theory and Practice of Psychotherapy <i>Maros (CE)</i>		
9:50-11:05	Accelerated Experiential Dynamic Psychotherapy: Clinical Decision Making <i>Kranz</i>	Inclusive Psychodynamic/Cognitive Behavioral Consultation: Overview and Demonstration <i>Einhorn (CE)</i>	Integrative Therapy with Diverse Couples: Addressing Race, Religion, and Socioeconomic Status <i>Kelly (CE)</i>	How to Diagnose and Treat Schizoid Self Disorder in Masterson Approach <i>Aydin (CE)</i>	Time Limited Mentalization-Based Treatment for Children (MBT-C) <i>Malberg (CE)</i>	Psychotherapy for Relationally Violent Men in Intimate Partner Violence <i>Harris (CE)</i>
11:05-11:30	Coffee break					
11:30-12:45	A Video Preview of Coming Attractions: How Energy Therapy Innovations Might Radically Accelerate Psychodynamic Treatment <i>Heitler</i>	Practical Applications of Research on the Mechanisms of Change in Emotionally Focused Couple Therapy <i>Brubacher (CE)</i>	3D Recovery: An Integrative Treatment for Addiction <i>Maddoux (CE)</i>	Broadening scope of flexibility with cognitive behavioral psychotherapy practice: could we enhance outcome? <i>Rady</i>	Utilizing Genograms to Integrate Systems and Psychodynamic Thinking <i>Browning (CE)</i>	Moving from Grief back to Life after Perinatal Loss <i>Bindeman (CE)</i>
12:45-13:00	Closing Remarks Goodbye to Remaining Group of Attendants!					
	Concluding Thoughts, Announcement of Next Conference					

Friday, 19 May

**Presidential Opening
Remarks**

Nuno Conceição, Lisbon
University

Keynote

Marvin Goldfried, Stony Brook
University

CE

Friday | 8:30 AM —9:40 AM | Majestic Ballroom

**Integrative Themes in Psychotherapy: Searching for
Universal Principles to Guide our Clinical Work**

**Panel/Symposium
*Integration***

Organizer: Andre Marquis,
University of Rochester

CE

Friday | 9:45 AM —11:00 AM | Majestic Ballroom

**Applying Unified Metatheories of Psychotherapy to
Training Integrative Decision-Making Skills**

**An Interpersonal Reconstructive Therapy lens on teaching the
conceptual skills needed for integrative decision-making in
unified psychotherapy**

Kenneth L. Critchfield, James Madison University

**Systems Metatheory and the Concept of Nonlinearity:
Implications for Facilitating the Practice and Training of
Integrative Decision-Making**

Jack Charles Anchin, Medaille College & University at Buffalo--SUNY

**TEST RePP: An Integrative Model for Teaching Clinical Decision-
Making**

Gregg Ros Henriques, James Madison University

**How Integral Psychotherapy Informs the Training of
Psychotherapists' Decision-Making**

Andre Marquis, University of Rochester

Discussant: Barry Wolfe, Rockville, MD

Panel/Symposium*Psychodynamic*

Organizer: Monique S Bowen,
PhD, SUNY Downstate Medical
Center

Friday | 9:45 AM —11:00 AM | Columbine

Finding your footing: Re-conceptualizing therapist factors in psychotherapy through the effective use of a culturally-competent framework

Familiar roles: A therapist's attempt at competence and congruence, this time by 'going Down South' into her own historical past.

Monique S Bowen, PhD, SUNY Downstate Medical Center

"How could you forget?": Re-collecting a Baby Boomer's personal histories of traumatic attachment within a culture-specific context

Aaryn Gottesfeld, private practice

Discussant:

Paul Wachtel, City College and CUNY Graduate Center

Mini-Workshop*Experiential*

Organizer: Kari A. Gleiser, AEDP
Institute

Friday | 9:45 AM —11:00 AM | Vail

Choice point or Convergence? Exploring transformative emotional processes and spiritual experiences

Mini-Workshop*Couple*

Organizer: Zoya Simakhodskaya,
New York Center for EFT
CE

Friday | 9:45 AM —11:00 AM | Terrace

Navigating the road to emotional and sexual intimacy in couples treatment: decision making process in integrating behavioral, mindfulness, psychodynamic interventions in Emotionally Focused Therapy.

Using attachment theory and EFT research as the foundation for determining timing and usefulness of behavioral, mindfulness, and psychodynamic interventions.

Zoya Simakhodskaya, New York Center for EFT

Beyond breaking sexual gridlock: using EFT and sensate focus to achieve greater relational and sexual intimacy.

Michael Moran, New York Center for EFT

It's About Time: Using the sexual system to strengthen a couple's emotional connection and heal attachment injuries.

Steffani Brandenburg, New York Center for EFT

Practice Consultations

Organizers: Franz Caspar,
University of Bern; Ueli Kramer,
Institute of Psychotherapy,
University of Lausanne

Friday | 9:45 AM —11:00 AM | Savoy

Motive Oriented Therapy Relationship - An integrative approach to individualised therapy relations

Discussants:

Arthur C. Bohart, California State University Dominguez Hills

Stanley Messer, Rutgers University - New Brunswick

Mini-Workshop*Experiential*

Organizer: Judith Schoenholtz-
Read, Fielding Graduate
University

CE

Friday | 9:45 AM —11:00 AM | Capitol

Integrating Emotional Arousal Techniques: Sensorimotor, Psychodrama and Imagery to Enhance Corrective Experiences in Psychotherapy**Coffee Break**

Friday | 11:00 AM —11:30 AM |

Structured Discussion*Psychotherapy*

Organizer: Jerrold Lee Shapiro,
Santa Clara University

CE

Friday | 11:30 AM —12:45 PM | Majestic Ballroom

To Err is Human; To learn from Mistakes... Therapeutic: Senior Psychotherapists Describe Therapeutic Errors and Recovery**Personal reactivity and errors in an existential case**

Jerrold Lee Shapiro, Santa Clara University

In defense of making errors, from a Client-Centered Therapy perspective

Arthur C. Bohart, California State University Dominguez Hills

When EFT therapy goes off the rails

Rhonda Goldman, Illinois School of Professional Psychology

Gaining wisdom from embarrassing moments through a CBT lens

Daniel B. Fishman, Rutgers University-New Brunswick

Discussant:

Stanley Messer, Rutgers University - New Brunswick

Mini-Workshop*Culture*

Organizer: Farah A. Ibrahim,
University of Colorado Denver

CE

Friday | 11:30 AM —12:45 PM | Columbine

Culturally Relevant Clinical Decision-Making**Mini-Workshop***Psychotherapy/research
bridge*

Organizer: Kristin A. R. Osborn,
Harvard Medical School

CE

Friday | 11:30 AM —12:45 PM | Vail

Beyond the Words: How Non-Verbal Interplay Can Assist You in Decision Making**Mini-Workshop***Integration*

Organizers: Jeff E. Harris, Texas
Woman's University; Barbara
Ingram, Pepperdine University

CE

Friday | 11:30 AM —12:45 PM | Terrace

Using a Unified Framework to Guide Clinical Decision-Making through Case Formulation and Treatment Planning**Mini-Workshop***Integration*

Organizers: Bryan Duckham,
Kimberly Carter, Southern
Illinois University Edwardsville

CE

Friday | 11:30 AM —12:45 PM | Savoy

Collapsing the Mind-Body Split: Clinical Approaches**Panel/Symposium***Case studies*

Organizer: Karen Farrell,
Midwestern University; John
Farrell, Associates in Clinical
Psychology and Substance
Abuse

Friday | 11:30 AM —12:45 PM | Capitol

Abuse/Attachment and Interpersonal Relationships: Strategies of Disconnection**Lunch**

Friday | 12:45 PM —2:15 PM |

Explore local restaurants (on your own)

Research Consultations

Friday | 12:45 PM —1:45 PM | Vail & Savoy

**Meet with JPI &
Newsletter Editors**

Friday | 12:45 PM —1:45 PM | Majestic Ballroom

Panel/Symposium*Interpersonal*

Organizer: Ueli Kramer, Institute of Psychotherapy, University of Lausanne

Friday | 2:15 PM —3:30 PM | Majestic Ballroom

Interpersonal factors in psychotherapy**Therapist Responsiveness in Treatments for Personality Disorders: a Challenge and a Principle of Change**

Ueli Kramer, Institute of Psychotherapy, University of Lausanne; Kenneth N. Levy, Penn State University

When is therapist anger helpful to patients?

Lorna Smith Benjamin, University of Utah; Kenneth L. Critchfield, James Madison University

Training Therapists in Interpersonal Process Through Video Simulation of Various Client Personality Styles

Timothy Anderson, Ohio University; Catherine Eubanks, Yeshiva University; Jeremy Safran, New School for Social Research

Panel/Symposium

Organizer: Tom Holman, Private Practice, Montgomery Village, MD and Faculty, Washington School of Psychiatry

CE

Friday | 2:15 PM —3:30 PM | Columbine

Clinical Decision Making: Developmental, Disorder and Disability Cultures**Collaborative Treatment Planning with Special Needs Families: Integrative Psychotherapeutic Modeling Within Disability Culture Contexts**

Judith Tischler, University of San Francisco

Clinical Decision Making: Disorder or Developmental Issue?

Carolyn Gralewski, Argosy University

Towards an Integrative Cultural Psychotherapy

Amy Orecchia, PhD, LP, Park Nicollet Health Services; Martin La Roche, PhD, LP, Harvard Medical School

Panel/Symposium*Change Process*

Organizer: Karen Pando-Mars,
AEDP Institute

CE

Friday | 2:15 PM —3:30 PM | Vail

What is essential to bringing about Therapeutic Change? How can research hypotheses be tested in live psychotherapy sessions?

Building the Self by "Being with" and "staying with" Corrective Emotional Experiences

SueAnne V. Piliero, Senior Faculty, AEDP Institute

What Changes? How corrective experiences make way for adaptive action on behalf of the Self.

Karen Pando-Mars, AEDP Institute

Discussant:

Richard Lane, University of Arizona

Panel/Symposium*Integration*

Organizer: Jill Browning, New
York University

Friday | 2:15 PM —3:30 PM | Terrace

You can't hurry love: Choice points in treatment for sexual avoidance

Discussants:

Stephen Holland & Robert Cohen

Panel/Symposium*Trauma*

Organizer: Dr. Sally Nazari,
Chrysalis Psychological Services

CE

Friday | 2:15 PM —3:30 PM | Savoy

Trauma in Special Populations

Exploring Change Process Among Adult Female Survivors of Recurrent Trauma

Dr. Sally Nazari, Chrysalis Psychological Services

Moral Injury and its Impact on Judgment and Self-Worth

Vladimir Nacev, Ph.D, ABPP, UMUC

PTSD and its Impact on Cognitive Functions, Work Performance and Judgment

Katie M. Fry, M.S., Fielding Graduate University; Vladimir Nacev, Ph.D, ABPP, UMUC

Mini-Workshop*Attachment*

Organizer: Bruce Liese,
University of Kansas

CE

Friday | 2:15 PM —3:30 PM | Capitol

The Attachment Beliefs and Behaviors Scale (ABBS): A new resource for understanding clients' close relationships

Structured Discussion*Integration*

Organizer: Sally D. Stabb, Texas Woman's University

Friday | 3:35 PM —4:50 PM | Vail

Bringing the Body and Mind in Psychotherapy**The Embodied and Emotional Experiences of Meditators: Implications for Integrating Therapy Modalities**

Sapna Patel & Sally D. Stabb, Texas Woman's University

Trauma-Sensitive Yoga: Perspectives on Integrated Trauma Treatment

Evan Bodine & Jeff E. Harris, Texas Woman's University

Panel/Symposium*Therapist factors*

Organizer: James Franklin Boswell, University at Albany, SUNY

CE

Friday | 3:35 PM —4:50 PM | Majestic Ballroom

Therapist Effects**Therapist Effects: What do we Know and What are the Implications?**

James Franklin Boswell, Matteo Bugatti, Carly Schwartzman, University at Albany, SUNY; David Kraus, Outcome Referrals, Inc.; Michael Constantino, University of Massachusetts Amherst; Louis Castonguay, Penn State University

How Therapist Skill Explains the Therapist Effect

Timothy Anderson, Ohio University; Clara Hill, University of Maryland

Therapist Negative Reactions: How to Transform Toxic Experiences

Abraham Wolf, Private Practice; Marvin Goldfried, Stony Brook University

What do we Know about Expertise that Might Explain Therapist Effects?

Franz Caspar, University of Bern

Mini-Workshop*Trauma*

Organizer: Mary Curry, PhD, Smith College

CE

Friday | 3:35 PM —4:50 PM | Columbine

Assimilative Integration of Neurobiologically Informed Concepts for the Treatment of Traumatic Stress

Panel/Symposium

Organizer: Alessio Gori,
University of Florence

Friday | 3:35 PM — 4:50 PM | Savoy

Choices for Professional and Personal Development

Pitfalls and pathways in the development of the integrative psychotherapist's selection and use of theory: an educator's perspective

Daniel Marom, Mandel School for Educational Leadership

Personality features and the choice of psychotherapy training: an exploratory study

Alessio Gori, University of Florence; Marco Cacioppo, Vincenzo Caretti, LUMSA University of Rome

Wellness of Healthcare Providers: Successful Recovery from Vicarious Trauma

Vladimir Nacev, Ph.D, ABPP, UMUC

Practice Consultations

Friday | 3:35 PM — 4:50 PM | Terrace

Live Session with Marvin Goldfried

Discussants:

Arthur C. Bohart, California State University Dominguez Hills

Lorna Smith Benjamin, University of Utah

Panel/Symposium

Training

Organizer: Tahir Ozakkas,
Psychotherapy Institute, Turkey

Friday | 3:35 PM — 4:50 PM | Capitol

Training Experience of Integrative Psychotherapy of 15 years

Integrative Psychotherapy Training in Turkey: Grand Overview

Tahir Ozakkas, Psychotherapy Institute, Turkey

Integrative Psychotherapy Training, Psychotherapy Institution: Theoretical Training

Ahsen Ozakkas, Psychotherapy Institute, Turkey

Integrative Psychotherapy Training, Psychotherapy Institution: Formulation Training

Gonca Kucuktetik, Psychotherapy Institute, Turkey

Integrative Psychotherapy Training, Psychotherapy Institution: Supervision

Begüm Kaplan, Psychotherapy Institution

Discussants:

Gonca Kucuktetik, Psychotherapy Institute, Turkey

Tahir Ozakkas, Psikoterapi Enstitüsü Turkey

CE

Coffee Break

Friday | 4:50 PM —5:20 PM |

Panel/Symposium*Emotion-focused*Organizer: Shigeru Iwakabe,
Ochanomizu University**CE**

Friday | 5:20 PM —6:35 PM | Majestic Ballroom

**When to lead and when to follow in AEDP and EFT:
Making the most of affective change processes****Leading and Following in Emotion-focused therapy: the ongoing
dilemma**

Rhonda Goldman, Illinois School of Professional Psychology

Leading and Following: The Artistry of AEDP

Karen Pando-Mars, AEDP Institute

Panel/Symposium*Trauma*Organizer: Jennifer Davidtz,
Nova Southeastern University

Friday | 5:20 PM —6:35 PM | Columbine

**Three tales of complex PTSD: Clinical decision making
in action****Navigating the maze, indeed: treating a complex trauma survivor
in the context of pregnancy, homelessness, and borderline
intellectual functioning**

Sophia Policastro, Nova Southeastern University

**Embracing ambiguity: integrative treatment of a patient with
dissociative identity disorder**

Jennifer Davidtz, Nova Southeastern University

**The body comes to therapy, too: Integrating yoga into phase-
oriented trauma processing**

Nicole Sciarrino, Nova Southeastern University

Discussant:

Karen Farrell, Midwestern University

Mini-Workshop*Couple*Organizer: Peter Fraenkel, City
College of New York

Friday | 5:20 PM —6:35 PM | Vail

**The Therapeutic Palette: An Innovative Approach to
Decision-Making in Couple Therapy**

Panel/Symposium

Organizer: Judith Schoenholtz-Read, Fielding Graduate University

Friday | 5:20 PM —6:35 PM | Terrace

From Two Person to Group Based Psychotherapy Integration**Emotion-Focused Family Therapy: Supporting Clinicians to Process Parental Therapy-Interfering Behaviors**

Adele Lafrance, Laurentian University

From Two Person to Group Based Psychotherapy Integration: Integrated Relational Group Schema Theory and Therapy

Judith Schoenholtz-Read, Fielding Graduate University

Integrative psychotherapy in pedagogy of leisure time

Daniel Baumruk, Skálúv Institut o.p.s.

Panel/Symposium

Organizer: Maximilien Bachelart, AEMO (French Educational Guidance Service for Adolescent) & Private practice

Friday | 5:20 PM —6:35 PM | Savoy

Psychotherapy Integration in Psychoanalysis and Spirituality**Identifying Spirituality within Psychotherapy**

Osamu Kuramitsu, The Open University of Japan

Could experiential work be integrated into psychoanalytic theory and practice? Should it?

Ofer Maurer, Centre for Academic Studies Or-Yehuda

USA and France: Different clinical decisions at work, but are we in the the same Maze?

Maximilien Bachelart, AEMO (French Educational Guidance Service for Adolescent) & Private practice

Psychoanalysis and Trauma: Room for Improvement?

Patricia Hunter, Manhattan Institute for Psychoanalysis

Mini-Workshop***Integration***

Organizer: Claudia Porras Pyland, Texas Woman's University

CE

Friday | 5:20 PM —6:35 PM | Capitol

Unified Psychotherapy for Victims of Intimate Partner Violence

Claudia Porras Pyland, Danica A. Harris & Jeff E. Harris
Texas Woman's University

Awards Ceremony

Friday | 6:40 PM —7:15 PM | Majestic Ballroom

Poster Session & Reception

Friday | 7:15 PM —9:00 PM | Fifty Restaurant

Poster Session & Reception**Case Study: An Integrative Approach to NPD**

Fadime Yurtseven, Psychotherapy Institution, Turkey

Transition from Integrative Psychotherapy to Emotion-Focused Therapy (EFT) and Re-integration Attempt Along with Cultural Diversities

Guney Toprak & Tahir Ozakkas, Psychotherapy Institute-Turkey

The Effects of Stress Inoculation, Physical Relaxation and Skill Acquisition Training in Managing Occupational Stress Among Health Workers in Ekiti State, Nigeria

Olasupo Bamidele, National Open University of Nigeria; Ruth Saidu, University of Lagos, Akoka, Lagos state, Nigeria; Funmilola Akinpelu, University of Syracuse U.S.A; Rosemary Fehintoluwa Saidu, National Open University of Nigeria

Pedophilia and Child Abuse

Nimet Zenginer Kirisci & Tahir Ozakkas, Psychotherapy Institute-Turkey

The Synthesis of Short-Term Psychodynamic Psychotherapy with Acceptance and Commitment Therapy

Michelle Matoff, CalSouthern University

Considering a client's voice when decision-making: A case study exploring clinical decisions when treating borderline personality pathology through integrated psychotherapy

Nicole F Caron, Nova Southeastern University

Pay-for-Performance in Behavioral Health Care: A Systematic Review

Matteo Bugatti, University at Albany, SUNY; Jennifer Oswald, Elijah Cedeno, James Franklin Boswell, University at Albany, SUNY; Ann Doucette, Claremont Graduate University

The empirical landscape of the Journal of Psychotherapy Integration between 1991 and 2016: A systematic review

Elijah Cedeno, Matteo Bugatti, Samuel Snyder, Riana Piccirillo-Delgado, Brittany Iles, James Franklin Boswell, University at Albany, SUNY

Stigma in the Psychotherapy Process

Busra Vedat Tatari Celik, Psychotherapy Institute-Turkey

Incorporating mind and body: an integrative approach to borderline personality disorder in a community mental healthcare setting

Brittany Nicole Rubin, Nova Southeastern University

Clinician adherence and competence delivering a recently adopted transdiagnostic evidence-based treatment program for severe eating and comorbid disorders

Jennifer Oswald, University at Albany, SUNY; Matteo Bugatti, University at Albany, SUNY; Melanie Smith, The Renfrew Center; James Franklin Boswell, University at Albany, SUNY

Integrative Treatment Approach in Disorders of Vaginismus

Semiha Tufan & Tahir Ozakkas, Psychotherapy Institute-Turkey

An Integrative Approach to a Couple with Sexual Dysfunction Disorder: Premature Ejaculation and Erectile Dysfunction Male and Female with Anorgasmia

Semiha Tufan & Tahir Ozakkas, Psychotherapy Institute-Turkey

From in-session corrective emotional experience to interpersonal change in real life: A systematic case study of integrative affect-focused therapy

Kaori Nakamura, Shigeru Iwakabe, Eri Mukai & Yuka Kimura, Ochanomizu University

Routine Outcome Monitoring in Psychotherapy: A preliminary search for underlying, in-session processes

Alexandre Vaz & Daniel Sousa, ISPA-IU

Non-Diagnostic Patient Factors as Predictors of Early Termination and Therapeutic Gains

Kimberley Miller, Larry Beutler, Christopher Edwards, Shweta Ghosh, Palo Alto University

MBSR Mobile App for Veterans and First Responders Outcomes and Next Steps: Identifying Common Factors for Therapy Adherence

Karen Wolford, Kimberly Zettel, SUNY Oswego; Arthur Delsing, University of Arizona;

Interprofessional education (IPE) and psychotherapy integration: Are counselling psychology students ready?

Ellen Marie Klaver, William Joseph Whelton, University of Alberta; Nicole Kelly Davis, M.Ed., Greg Harris, Ph.D., Memorial University of Newfoundland; Elaine Greidanus, Ph.D., University of Lethbridge

Who gets better and why? Predicting the development of a working alliance and its subsequent role in pharmacotherapy for social anxiety disorder

Jonah Cohen, Temple University

Countertransference Among Therapists: Understanding the Reactions of Therapists and Their Ability to Work with Suicidal Patients

Derek Fenwick, Nova Southeastern University

An Examination of Therapist Management of Resistance in Motivational Interviewing Integrated with Cognitive-Behavioral Therapy for Generalized Anxiety

Kimberley M. Hara, York University; Henny A. Westra, York University; Michael Constantino, University of Massachusetts Amherst; Martin M. Antony, Ryerson University

Introduction of Family Education Sessions: discussing the family in the development of adolescent individuals

Sibel Toy & Tahir Ozakkas, Psychotherapy Institute-Turkey

Race and Aggression: Exploring the Diagnostic Decision Making Among Doctoral Level Trainees

Christopher Elliott Fisher, Paula Brochu, William Dorfman & Jennifer Davidtz, Nova Southeastern University

Philosophical Basis of Intersubjectivity Theory

Sinem Aritemiz & Tahir Ozakkas, Psychotherapy Institute-Turkey

Saturday, 20 May

Panel/Symposium

Experiential

Organizer: Arthur C. Bohart,
California State University
Dominguez Hills

CE

Saturday | 8:30 AM —9:55 AM | Majestic Ballroom

Clinical Decision Making in Two Integrative Humanistic-Experiential Psychotherapies: Comparisons and Contrasts

Clinical Decision-Making From An Integrative Person-Centered Perspective: An Alternative Paradigm

Arthur C. Bohart, California State University Dominguez Hills

Clinical Decision Making in Emotion-Focused Psychotherapy

Rhonda Goldman, Illinois School of Professional Psychology

Discussant:

Jerrold Lee Shapiro, Santa Clara University

Structured Discussion

Training

Organizer: Jack Charles Anchin,
Medaille College & University at
Buffalo--SUNY

CE

Saturday | 8:30 AM —9:55 AM | Columbine

Comparing and Contrasting Decision-Making by Experienced and Novice Integrative Psychotherapists

Héctor Fernández-Álvarez, Aiglé Foundation

Beatriz Gómez, Aiglé Foundation

Shigeru Iwakabe, Ochanomizu University

Alexandre Vaz, ISPA-IU

Discussant:

Jack Charles Anchin, Medaille College & University at Buffalo--SUNY

Panel/Symposium

Organizer: Erkki Heinonen,
University of Helsinki, Finland

Saturday | 8:30 AM —9:55 AM | Vail

Patient/Therapist/Common Factors**Change in Patients' Expectations in Psychotherapy and Correlations with Therapist Interventions**

Kevin McCarthy, Rachel Fallig, Chestnut Hill College; Dianne Chambless, University of Pennsylvania; Barbara Milrod, Weill Cornell Medical College; Jacques Barber, Adelphi University

Client reflections on confirmation and disconfirmation of process expectations in cognitive behavioral therapy for generalized anxiety disorder: A qualitative analysis

Melissa L. Button, Henny A. Westra & Lynne Angus, York University; Michael Constantino, University of Massachusetts Amherst; Martin M. Antony, Ryerson University

What are the characteristics of the psychotherapist that matter in terms of patient outcomes? A systematic literature review

Erkki Heinonen, University of Helsinki; Helene Nissen-Lie, University of Oslo

How a therapist speaks: the language as a way of integration among the psychotherapies. 12 linguistic ingredients that a therapist can't not use.

Bernardo Paoli, LACT

Mini-Workshop*Change Process*

Organizer: Kristin A. R. Osborn,
Harvard Medical School

CE

Saturday | 8:30 AM —9:55 AM | Terrace

Open Your Heart in the Face of Self-Destructive Behaviors: Using Affect Phobia Therapy (APT) to empower your clients to leave their symptoms behind**Panel/Symposium***Case studies*

Organizer: Tahir Ozakkas,
Psychotherapy Institute-Turkey

CE

Saturday | 8:30 AM —9:55 AM | Savoy

Case Studies and General Clinical Approach and Cultural Differences**Coup d'Etat Night 15th of July in Turkey from the Eyes of an Anesthesiologist/Psychotherapist**

Büşra Tezcan & Tahir Ozakkas, Psychotherapy Institute-Turkey

Case Study: Discussing Hypotherapy Methods in Panic Disorder Patient

Tahir Ozakkas & Enes Bulbul, Psychotherapy institute

Adaptation of Test of Object Relations (TOR) in a Turkish Sample

Yasemin Ozkan & Tahir Ozakkas, Psychotherapy Institute-Turkey

Mini-Workshop*Child/Adolescent*

Organizer: Tom Holman, Private Practice, Montgomery Village, MD and Faculty, Washington School of Psychiatry

CE

Saturday | 8:30 AM —9:55 AM | Capitol

Autistic Children Inspire and Require Integration of Psychotherapies and Integration of Psychotherapy with other essential interventions

Panel/Symposium*Case studies*

Organizer: Daniel B. Fishman, Rutgers University-New Brunswick

CE

Saturday | 10:00 AM —11:15 AM | Majestic Ballroom

A Mixed-Methods Approach to Clinical Decision-Making: Integrating RCTs and Case Studies

Introduction to the Mixed-Methods Approach to RCTs and Case Studies

Stanley Messer, Rutgers University - New Brunswick

A "Cool Kids/Chilled Adolescents" (CK/CA) Intervention for Youth Anxiety Disorders: An RCT and Systematic Case Studies Drawn From Within the RCT

Daniel B. Fishman, Rutgers University - New Brunswick

A "Motivational Enhancement Therapy" (MET) Intervention for Depressed Latino Adults: An RCT and Systematic Case Studies Drawn From Within the RCT

William Buerger, Rutgers University - New Brunswick

Discussant:

Shigeru Iwakabe, Ochanomizu University

Panel/Symposium*Integration*

Organizer: Jennifer L Callahan, University of North Texas

CE

Saturday | 10:00 AM —11:15 AM | Columbine

New Directions in Psychotherapy Integration

Development of Phase Model and RDoC Congruent Outcome Measures

Jennifer L Callahan & Elizabeth Davis, University of North Texas

Can an Integrative Theory Be Created on the Basis of Empirical Findings? The Disruptive Role of Method Effects

Scott Thomas Meier, University at Buffalo

Task Matching: Development of a clinical decision making map for therapist's marker-guided responsiveness

Alexandre Vaz, ISPA-IU; Daniel Sousa, ISPA-IU; Nuno Conceição, University of Lisbon; John C. Norcross, Scranton University

Mini-Workshop*Couple*

Organizer: Ellen Wachtel, Private Practice

Saturday | 10:00 AM —11:15 AM | Vail

The Heart of Couple Therapy: Finding Strengths and Keeping on Focus

Mini-Workshop*Assessment*

Organizer: Gregg Ros Henriques, James Madison University

Saturday | 10:00 AM —11:15 AM | Terrace

The Well-Being Checkup System

Panel/Symposium

Organizer: Sara Florence, Nova Southeastern University

Saturday | 10:00 AM —11:15 AM | Savoy

Training, Supervision, Consultation and Mentoring

Meeting in the middle: Recommendations for trainees and supervisors for overcoming uncertainty in clinical decision-making

Sara Florence, Nova Southeastern University

Experience may not help outcome, but will mentoring?: Licensed therapists engaging in peer mentoring

Russell Bailey, David Erekson, Kaelene Fenn, Braden Tanner, Brigham Young University

Supportive psychotherapy, an integrative perspective

Benjamin Fortin-Langelier, University of Ottawa; Deana Mercer, University of Ottawa; Doug Green, University of Ottawa

Coffee Break

Saturday | 11:15 AM —11:45 AM |

Mini-Workshop*Training*

Organizer: Edward B. Meidenbauer, American Psychological Association

Saturday | 11:45 AM —1:00 PM | Majestic Ballroom

Training Clinical Judgment Using Streaming Psychotherapy Videos: APA PsycTHERAPY

Panel/Symposium*Somatic*

Organizer: Richard Lane,
University of Arizona

CE

Saturday | 11:45 AM —1:00 PM | Columbine

**Psychotherapeutic Treatment of Chronic Pain by
Enhancing Emotional Awareness**

**Effectiveness of Emotional Awareness and Expression Therapy
for Pain in Fibromyalgia**

Howard Schubiner, Michigan State University College of Human Medicine

**No Longer Afraid to Feel: Illustrating how emotional awareness
relieves chronic pain**

Frances Sommer Anderson, Manhattan Institute for Psychoanalysis

**A Brain-Based Model of How Promoting Emotional Awareness
May Attenuate Chronic Pain**

Richard Lane, University of Arizona

Mini-Workshop*Integration*

Organizer: Jennifer Edlin,
SueAnne V. Piliero, AEDP
Institute

Saturday | 11:45 AM —1:00 PM | Vail

**Recognizing and Responding to the Markers for
Building Self-Compassion in our Clients: The Integration
of Mindfulness, Attachment Theory, and AEDP in
Moment-by-Moment Clinical Work to Transform
Maladaptive Versions of Self**

Mini-Workshop*Personality disorders*

Organizer: Judith Pearson, The
International Masterson
Institute

Saturday | 11:45 AM —1:00 PM | Terrace

**The Phenomenology, Diagnosis and Treatment of The
Borderline Personality Disorder: The Masterson
Approach.**

Judith Pearson, Loray Daws & Meral Aydin, The International Masterson
Institute

Discussant:

Carolyn Bankston, The International Masterson Institute

Mini-Workshop*Psychotherapy/research
bridge*

Organizer: Yakov Shapiro,
University of Alberta

CE

Saturday | 11:45 AM —1:00 PM | Savoy

**Psychotherapy Integration: Dynamical Systems
Approach as a Meta-Framework for Therapeutic
Change**

Panel/Symposium

Eclectic

Organizer: Tahir Ozakkas,
Psychotherapy Institute-Turkey

CE

Saturday | 11:45 AM —1:00 PM | Capitol

Different Psychotherapy Technics in Clinical Practice

Cognitive Poetry Therapy

Harun Gunduz & Tahir Ozakkas, Psychotherapy Institute-Turkey

Application of Psychotherapeutic Methods into Sports

Mustafa Aydin & Tahir Ozakkas, Psychotherapy Institute-Turkey

Aikido-Embedded Integrative Psychotherapy

Emrullah Kilic & Tahir Ozakkas, Psychotherapy Institute-Turkey

Object Relations Representations in Psychodrama Stage

Melek Arslanbenzer & Tahir Ozakkas, Psychotherapy Institute-Turkey

**Application of Attack Therapy: Positive and Negative Aspects,
Patient Inclusion Criteria**

Abdullah Alpaslan & Tahir Ozakkas, Psychotherapy Institute-Turkey

Discussant:

Tahir Ozakkas, Psychotherapy Institute-Turkey

Lunch

Saturday | 1:00 PM —2:30 PM |

Explore local restaurants (on your own)

Keynote

Organizer: Lorna Smith
Benjamin, University of Utah

CE

Saturday | 2:30 PM —3:25 PM | Majestic Ballroom

**Sifting and winnowing through effective approaches to
maximize outcome for each individual**

Panel/Symposium

Integration

Organizer: Jeffery Steven Smith,
New York Medical College

CE

Saturday | 3:30 PM —4:45 PM | Majestic Ballroom

Are We There Yet? Seeking Theoretical Convergence

**Memory Reconsolidation, Emotional Arousal and the Process of
Change in Psychotherapy**

Richard Lane, University of Arizona

The Affect Avoidance Model

Jeffery Steven Smith, New York Medical College

Discussant:

Rhonda Goldman, Illinois School of Professional Psychology

Panel/Symposium*Culture*

Organizer: Jennifer Davidtz,
Nova Southeastern University

Saturday | 3:30 PM —4:45 PM | Columbine

When aggression and culture intersect: the challenge of talking therapeutically about race

The case study of "Rob" -- Facilitating exploration of racial content between White clients and Black therapists

Chelsea Walton, Nova Southeastern University

The case study of "Alicia" -- Using the therapeutic relationship to explore American race relations

Yanique Levy, Nova Southeastern University

Supervising While White: Reflections on Exploring Race-Related Themes in Clinical Supervision

Jennifer Davidtz, Nova Southeastern University

Discussant:

Christopher Elliott Fisher, Nova Southeastern University

Mini-Workshop*Personality disorders*

Organizer: Carolyn Bankston,
Masterson Institute Turkey &
The International Masterson
Institute

Saturday | 3:30 PM —4:45 PM | Terrace

Diagnosis and Treatment of the Narcissistic Personality Disorder

Theory and Diagnosis of NPD within The Masterson Approach

Carolyn Bankston, The International Masterson Institute

Treatment of NPD within The Masterson Approach

Meral Aydin & Judith Pearson, The International Masterson Institute

Mini-Workshop

Organizer: Albert Levis, Museum
of the Creative Process, Institute
of Conflict Analysis; Maxwell
Levis, Boston University

CE

Saturday | 3:30 PM —4:45 PM | Capitol

Utilizing the Conflict Analysis Battery, an online didactic, diagnostic and integrative therapeutic self-assessment

Panel/Symposium*Change Process*

Organizer: Nuno Conceição,
University of Lisbon

CE

Saturday | 3:30 PM —4:45 PM | Vail

Facilitating both emotional and relational change: AEDP distinctive and integrable principles

The "Acceleration" in Accelerated Experiential Dynamic Psychotherapy: Patient and therapist experiences in the early phase of therapy

Shigeru Iwakabe, Kaori Nakamura, Minami Fuchigami, Riko Nakayama, Ochanomizu University; Diana Fosha, Jennifer Edlin, AEDP Institute; Nuno Conceição, University of Lisbon

Decisions around processing the process of change: disassembling and reassembling the previous task model of metaprocessing

Nuno Conceição, Catarina Rodrigues, Sara Ribeiro, Ana Gonzalez, A.Rita Ferreira, Ana Silva, , Mariana Caetano, University of Lisbon; Alexandre Vaz; Shigeru Iwakabe, Ochanomizu University, Jennifer Edlin, Diana Fosha, AEDP Institute

Attunement, Disruption and Repair in the Therapeutic Process

Nzula Tavormina, University of British Columbia

Discussant:

Kristin A. R. Osborn, Harvard Medical School

Panel/Symposium

Organizer: Josee Lucile Jarry,
University of Windsor

CE

Saturday | 3:30 PM —4:45 PM | Savoy

Having the Body and Spirit in Mind

Ashtanga yoga alleviates symptoms of depression: Preliminary results.

Josee Lucile Jarry, Felicia Chang & Ashley Howard, University of Windsor

The Case of Dianne: Integrating Reiki, Relational Factors, Cognitive-Behavioral Interventions, Experiential Techniques, and DBT to Facilitate Change Processes In Trauma Symptomatology within Outpatient Settings

Dr. Sally Nazari, Chrysalis Psychological Services

Nourishing the Spirit: Exploratory Research on Ayahuasca Experiences Along the Continuum of Recovery from Eating Disorders and Other Mental Health Issues

Adele Lafrance, Laurentian University

Somatic Countertransference and Sexual Dysfunction in Doctoral Trainees Working with Trauma: Using Somatic Attunement to Inform Clinical Decisions and Implement Self-Care

Michela Gaffney Kane & Derek Fenwick, Nova Southeastern University

Coffee Break

Saturday | 4:45 PM —5:15 PM |

Keynote*Integration*

Organizer: Paul Wachtel, City
College and CUNY Graduate
Center

CE

Saturday | 5:15 PM —6:30 PM | Majestic Ballroom

**Promoting Acceptance and Assimilation of Warded Off
Parts of Self and Experience****Presidential Pre-Closing
Remarks**

Nuno Conceição, Lisbon
University

Sunday, 21 May

Mini-Workshop

Psychotherapy

Organizer: William Boyd, Ascent
Medical Consultants

CE

Sunday | 8:30 AM —9:45 AM | Columbine

Cognitive-Behavioral-Expectant Therapy: Variation on a Theme

Mini-Workshop

Emotion-focused

Organizer: Susan Warren
Warshow, DEFT Institute

Sunday | 8:30 AM —9:45 AM | Vail

The Decision to Follow a Dream: An Intuitive DEFT Approach with Video Analysis

Mini-Workshop

Integration

Organizer: Yudit Maros, Center
for Authentic Living, LLC

CE

Sunday | 8:30 AM —9:45 AM | Terrace

Authenticity Therapy: A New Unifying Framework for the Theory and Practice of Psychotherapy

Mini-Workshop

Emotion

Organizer: Karen Catharine
Kranz, R. Psych. Faculty AEDP
Institute

Sunday | 9:50 AM —11:05 AM | Majestic Ballroom

Accelerated Experiential Dynamic Psychotherapy: Clinical Decision Making

Mini-Workshop

Integration

Organizer: Jay Einhorn,
Independent Practice /
Northwestern University

CE

Sunday | 9:50 AM —11:05 AM | Columbine

Inclusive Psychodynamic/Cognitive Behavioral Consultation: Overview and Demonstration

Mini-Workshop*Integration*

Organizer: Shalonda Kelly,
Rutgers - GSAPP

CE

Sunday | 9:50 AM —11:05 AM | Vail

Integrative Therapy with Diverse Couples: Addressing Race, Religion, and Socioeconomic Status**Principle-Based Integrative Therapy with African American Couples**

Shalonda Kelly, Rutgers - GSAPP

Integrating Spirituality into a Narrative Therapy Framework with Couples

Suzanne Coyle & Christina J. Davis, Christian Theological Seminary

Integrative Treatment to Address Structural Disparities for African Americans and Latinos

Kiara Wesley, Rutgers, The State University of New Jersey

Mini-Workshop*Personality disorders*

Organizer: Meral Aydin, The
International Masterson
Institute

CE

Sunday | 9:50 AM —11:05 AM | Terrace

How to Diagnose and Treat Schizoid Self Disorder in Masterson Approach

Meral Aydin & Carolyn Bankston, The International Masterson Institute

Mini-Workshop*Child/Adolescent*

Organizer: Norka T Malberg,
Yale Child Study Center

CE

Sunday | 9:50 AM —11:05 AM | Savoy

Time Limited Mentalization-Based Treatment for Children (MBT-C)**Mini-Workshop***Integration*

Organizer: Danica A. Harris,
Texas Woman's University

CE

Sunday | 9:50 AM —11:05 AM | Capitol

Unified Psychotherapy for the treatment of Relationally Violent Men who engage in Intimate Partner Violence

Danica A. Harris, Claudia Porrás Pyland & Jeff E. Harris, Texas Woman's University

Coffee Break

Sunday | 11:05 AM —11:30 AM |

Mini-Workshop*Depression*

Organizer: Susan Heitler, Rose
Medical Center, Denver

Saturday | 11:30 AM —12:45 AM | Majestic Ballroom

**A Video Preview of Coming Attractions: How Energy
Therapy Innovations Might Radically Accelerate
Psychodynamic Treatment.**

Discussants:

Daniel Hettleman, Ph.D., Private Practice

Panel/Symposium*Couple*

Organizer: Lorrie L. Brubacher,
UNC Greensboro

CE

Sunday | 11:30 AM —12:45 PM | Columbine

**Practical Applications of the Process Research on the
Mechanisms of Change in Emotionally Focused Couple
Therapy (EFT)**

Mini-Workshop*Addiction*

Organizer: John Maddoux,
Department of Veterans Affairs

CE

Sunday | 11:30 AM —12:45 PM | Vail

3D Recovery: An Integrative Treatment for Addiction

John Maddoux, Department of Veterans Affairs

Jeff E. Harris, Texas Woman's University

Mini-Workshop*CBT*

Organizer: Ahmed Rady,
Associate Professor at
Alexandria University

Sunday | 11:30 AM —12:45 PM | Terrace

**Broadening scope of flexibility with cognitive behavioral
psychotherapy practice: could we enhance outcome?**

Mini-Workshop*Integration*

Organizer: Scott Browning,
Chestnut Hill College

CE

Sunday | 11:30 AM —12:45 PM | Savoy

**Utilizing Genograms to Integrate Systems and
Psychodynamic Thinking**

Utilizing the Genogram for Systemic Case Conceptualization

Scott Browning, Chestnut Hill College

Psychodynamic Processes Illustrated through the Genogram

Rachel Hull, Chestnut Hill College

Discussant:

Kevin McCarthy, Chestnut Hill College

Mini-Workshop

Change Process

Organizer: Julie Bindeman, Psy-
D, Independent Practice

CE

Sunday | 11:30 AM —12:45 PM | Capitol

Moving from Grief back to Life after Perinatal Loss

Presidential Closing

Nuno Conceição, Lisbon
University

Sunday | 12:45 AM —13:00 PM | Majestic Ballroom

Index to Participants - First Authors & Discussants only

- A**
Alpaslan, Abdullah (abdullahalpaslan@psikoterapi.com): 20
Anchin, Jack Charles (Jack.C.Ancin@medaille.edu): 2, 15
Anderson, Timothy (timbohio@gmail.com): 6, 8
Aritemiz, Sinem (sinemaritemiz@psikoterapi.com): 20
Arslanbenzer, Melek (melekarslanbenzer@psikoterapi.com): 58
Ayden, Meral (marallimn@hotmail.com): 19, 21, 25
Aydin, Mustafa (mustafaaydin@psikoterapi.com): 20
- B**
Bachelart, Maximilien (bachelart.maximilien@gmail.com): 11
Bailey, Russell (russ_bailey@byu.edu): 18
Bamidele, Olasupo (drsupobamidele@gmail.com): 12
Bankston, Carolyn (cbankston@embarqmail.com): 19, 21
Baumruk, Daniel (baumruk.d@gmail.com): 11
Benjamin, Lorna Smith (lsb_3@msn.com): 6, 9, 20
Bindeman, Psy-D, Julie (drbindeman@gmail.com): 27
Bodine, Evan (ebodine@twu.edu): 8
Bohart, Arthur C. (abohart@csudh.edu): 4, 9, 15
Boswell, James Franklin (jboswell@albany.edu): 8, 12, 13
Bowen, Monique S (bowenphd@gmail.com): 3
Boyd, William (wboydphd@hotmail.com): 24
Brandenburg, Steffani (sbrandenburg@earthlink.net): 3
Bresler, Jill (drjbresler@gmail.com): 7
Browning, Scott (scobrown@chc.edu): 26
Brubacher, Lorrie L (lorrie@carolinaeft.com): 26
Buerger, William (will.buerger@gmail.com): 17
Bugatti, Matteo (mbugatti@albany.edu): 8, 12, 13
Button, Melissa L. (mbutton@yorku.ca): 16
- C**
Callahan, Jennifer L (jennifer.callahan@unt.edu): 17
Caron, Nicole F (nc860@nova.edu): 12
Carter, Kimberly (kimcart@siue.edu): 5
Caspar, Franz (franz.caspar@psy.unibe.ch): 8
Cedeno, Elijah (ecedeno@albany.edu): 12
Cohen, Jonah (jonah.cohen@temple.edu): 14
Cohen, Robert (rcohen1101@gmail.com): 7
Conceição, Nuno (nunoconceicao@gmail.com): 2, 17, 22, 23, 26
Coyle, Suzanne (scoyle@cts.edu): 25
Critchfield, Kenneth L. (critchkl@jmu.edu): 2, 6
Curry, Mary (mary.curry1111@gmail.com): 8
- D**
Davidtz, Jennifer (Jdavidtz@nova.edu): 10, 14, 21
Daws, Loray (loraydaws@shaw.ca): 19
Duckham, Bryan (bduckha@siue.edu): 5
- E**
Edlin, Jennifer (edlintherapy@gmail.com): 19, 22
- F**
Farrell, John (ACPSA1@gmail): 5
Farrell, Karen (kfarre@midwestern.edu): 5, 10
Fenwick, Derek (df886@nova.edu): 14, 22
Fernández-Álvarez, Héctor (hfa@aigle.org.ar): 15
Fisher, Christopher Elliott (cf987@nova.edu): 14, 21
Fishman, Daniel B. (dfishman.rutgers@gmail.com): 4, 17
Florence, Sara (sf1141@nova.edu): 18
Fortin-Langelier, Benjamin (benjamin.flangelier@gmail.com): 18
Fraenkel, Peter (fraenkelorama@gmail.com): 10
Fry, Katie M. (katie.holland.fry@gmail.com): 7
- G**
Gleiser, Kari A. (kari.gleiser@gmail.com): 3
Goldman, Rhonda (rhonda.goldman@comcast.net): 4, 10, 15, 20
Gómez, Beatriz (beatrizgomez@fibertel.com.ar): 15
Gori, Alessio (alessio_gori@libero.it): 9
Gottesfeld, Aaryn (aaryng@gmail.com): 3
Gralewski, Carolyn (carolyn@gralewski.com): 6
Gunduz, Harun (harungunduz@psikoterapi.com): 20
- H**
Hara, Kimberley M. (khara@yorku.ca): 14
Harris, Danica A. (dmartin8@twu.edu): 12, 25
Harris, Jeff E. (jharris18@twu.edu): 5, 8, 11, 25, 26
Heinonen, Erkki (erkki.heinonen@helsinki.fi): 16
Heitler, Susan (drheitler@gmail.com): 18, 26
Henriques, Gregg Ros (henriqgx@jmu.edu): 2, 18
Hettleman, Daniel (danielhettleman@gmail.com): 18
Hinterwallner, Heidemarie (heidemarie.hinterwallner@donau-uni.ac.at): 7, 13
Holland, Stephen (sholland@cognitivetherapydc.com): 7
Holman, Tom (tom@tomholman.com): 17
Hull, Rachel (HullR@chc.edu): 26
Hunter, Patricia (drpatriciahunter273@gmail.com): 11
- I**
Ibrahim, Farah A. (farah.ibrahim@ucdenver.edu): 5
Ingram, Barbara (barbara.ingram@pepperdine.edu): 5
Iwakabe, Shigeru (iwakabe.shigeru@ocha.ac.jp): 10, 13, 15, 17, 22
- J**
Jarry, Josee Lucile (jjarry@uwindsor.ca): 22
- K**
Kane, Michela Gaffney (mg2154@nova.edu): 22
Kelly, Shalonda (skelly@scarletmail.rutgers.edu): 25
Kilic, Emrullah (emrullahkilic@psikoterapi.com): 20
Klaver, Ellen Marie (eklaver@ualberta.ca): 13
Kramer, Ueli (ueli.kramer@chuv.ch): 4, 6
Kranz, Karen Catharine (drkarenkranz@gmail.com): 24
Kucuktetik, Gonca (gonca@psikoterapi.com): 9
Kuramitsu, Osamu (okuramitsu@gmail.com): 11
- L**
Lafrance, Adele (adele.lafrance@gmail.com): 11, 22

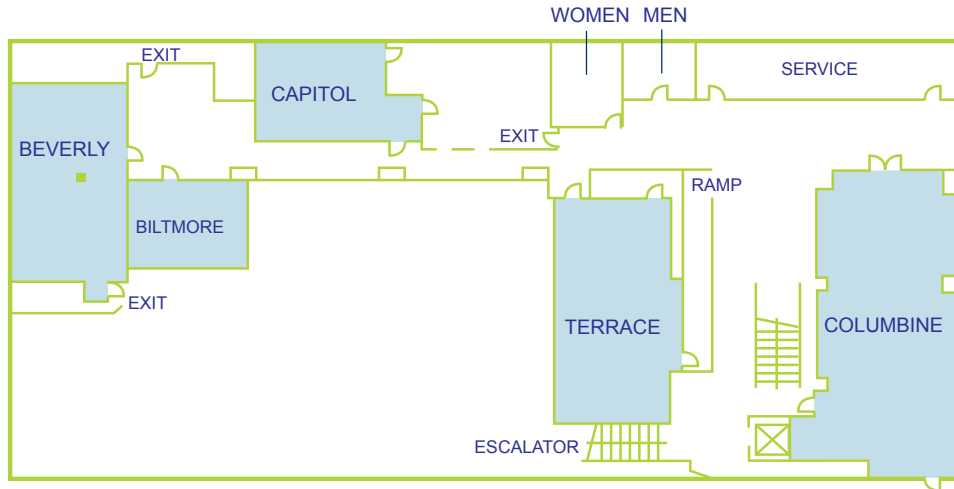
Index to Participants - First Authors & Discussants only

- Lane, Richard (lane@email.arizona.edu): 7 , 19, 20
Levis, Albert (moralscience@hotmail.com): 21
Levy, Yanique (yl176@nova.edu): 21
- M**
Maddoux, John (jmaddoux@twu.edu): 26
Malberg, Norka T (NMalberg@gmail.com): 25
Marom, Daniel (dmarom@mandel.org.il): 9
Maros, Yudit (yudit.maros1@gmail.com): 24
Marquis, Andre (amarquis@warner.rochester.edu): 2
Matoff, Michelle (mimatoff@googlemail.com): 12
Maurer, Ofer (offer.maurer@gmail.com): 11
McCarthy, Kevin (kevin.mccarthy@chc.edu): 16 , 26
Meidenbauer, Edward B. (emeidenbauer@apa.org): 18
Meier, Scott Thomas (stmeier@buffalo.edu): 17
Messer, Stanley (smesser@gsapp.rutgers.edu): 4 , 17
Miller, Kimberley (kmiller@paloalto.edu): 13
Moran, Michael (fulfilledcouples@gmail.com): 3
- N**
Nacev, Vladimir (nv235@msn.com): 7 , 9
Nakamura, Kaori (k_nakason@yahoo.co.jp): 13 , 22
Nazari, Sally (drnazari@drsallynazari.com): 7 , 22
- O**
Orecchia, Amy (amy.orecchia@gmail.com): 6
Osborn, Kristin A. R. (kristin@kristinosborn.com): 5 , 16 , 22
Oswald, Jennifer (joswald@albany.edu): 12 , 13
Ozakkas, Ahsen (admin@psikoterapi.com): 9
Ozakkas, Tahir (ozakkas@psikoterapi.com): 9 , 16 , 20
Ozkan, Yasemin (yaseminozkan@psikoterapi.com): 16
- P**
Pando-Mars, Karen (kpm117@comcast.net): 1 , 7 , 10
Paoli, Bernardo (bernardopaoli@yahoo.it): 16
Patel, Sapna (SPatel15@twu.edu): 8
Pearson, Judith (judithpearson@verizon.net): 19 , 21
Piliero, SueAnne V. (sapiliero@gmail.com): 1 , 7 , 19
Policastro, Sophia (sp1569@nova.edu): 10
Porrás Pyland, Claudia (cporras@twu.edu): 11 , 25
- R**
Rady, Ahmed (dr_ahmed_rady@yahoo.fr): 26
Rubin, Brittany Nicole (br489@nova.edu): 13
- S**
Schoenholtz-Read, Judith (jbsread@fielding.edu): 4 , 11
Schubiner, Howard (Hschubiner@gmail.com): 19
Sciarrino, Nicole (ns940@nova.edu): 10
Shapiro, Jerrold Lee (jshapiro@scu.edu): 4 , 15
Shapiro, Yakov (yshapiro@shaw.ca): 19
Simakhodskaya, Zoya (drzoyasim@gmail.com): 3
Smith, Jeffery Steven (jsmd@howtherapyworks.com): 20
Sommer Anderson, Frances (drfsommeranderson@gmail.com): 19
- T**
Tatari Celik, Busra Vedat (busratataricelik@psikoterapi.com): 12
Tavormina, Nzula (nzula@alumni.ubc.ca): 16
Tezcan, Büşra (busraytezcan@yahoo.com): 16
Tischler, Judith (judithtischlerphd@gmail.com): 6
Toprak, Guney (guneytoprak@psikoterapi.com): 12
Toy, Sibel (sibeltoy@psikoterapi.com): 14
Tufan, Semiha (semihatufan@psikoterapi.com): 13
- V**
Vaz, Alexandre (alexmagvaz@gmail.com): 13 , 15, 17 , 22
- W**
Wachtel, Ellen (wachteellen@yahoo.com): 18
Wachtel, Paul (paul.wachtel@gmail.com): 3 , 23
Walton, Chelsea (cw1408@nova.edu): 21
Warren Warshow, Susan (swarshow@me.com): 24
Wesley, Kiara (kiaracwesley@gmail.com): 25
Wolf, Abraham (abewolfphd@gmail.com): 25
Wolfe, Barry (bewolfephd@gmail.com): 8
Wolford, Karen (karen.wolford@oswego.edu): 13
- Y**
Yurtseven, Fadime (fadimeyurtseven@psikoterapi.com): 12
- Z**
Zengin Kirisci, Nimet (nimetkirisci@psikoterapi.com): 12

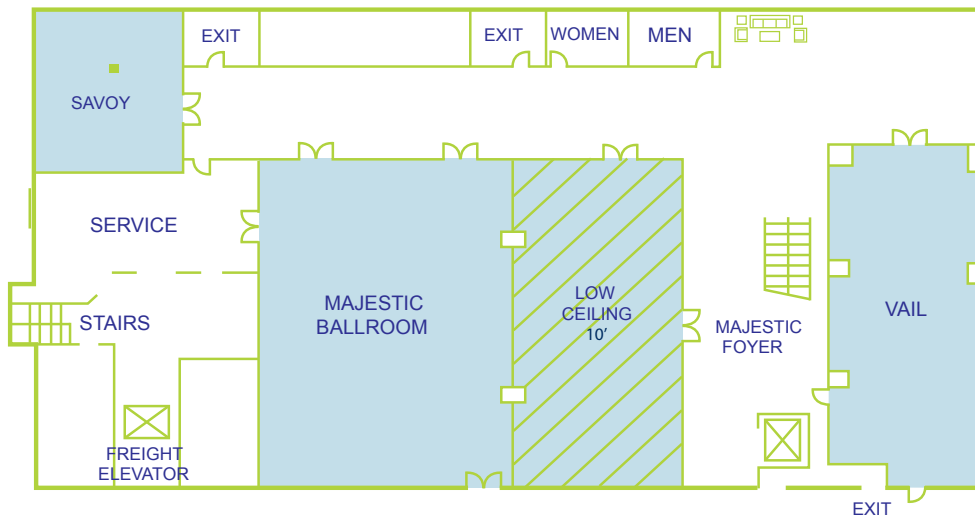
CAPACITY CHART



Tower Building Terrace Level



Tower Building Majestic Level



ROOM DIMENSIONS AND SEATING CHART

Room Name	Sq. Feet	Dimensions	Height	Theater	Classroom	Banquet	Reception	H-Square	Conf.	U-Shape
Columbine	1,700	68 x 24	8'	109	95	110	75	58	36	45
Terrace	1,200	23 x 52	8'	78	70	80	70	42	30	36
Capitol	630	23 x 27	8'	40	27	40	30	18	18	18
Biltmore	572	22 x 26	8'	32	21	30	30	18	18	16
Beverly	1,030	23 x 19	8'	55	51	50	50	18	30	15
Majestic Ballroom	5,700	85 x 67	19'/10'	300	144	280	280	74	-	54
Majestic Foyer	2,500	-	8'9"	-	-	-	100	-	-	-
Vail	1,700	23 x 68	8'9"	105	95	110	75	58	36	45
Savoy	950	28 x 34	8'9"	64	36	50	40	18	18	18



AMERICAN PSYCHOLOGICAL ASSOCIATION



APA JOURNALS®

Publishing on the Forefront of Psychology

**American Psychological Association Is
the Proud Publisher of the Official Journal
of the Society for the Exploration of
Psychotherapy Integration (SEPI)**



Journal of Psychotherapy Integration

Editor: Jennifer L. Callahan, PhD, ABPP

www.apa.org/pubs/journals/int

www.apa.org/pubs/journals