



2018 SRNT SCHEDULE AT A GLANCE

Tuesday, February 20, 2018

4:30 p.m.-6:30 p.m. Key Ballroom Foyer (Main Building, 2nd Floor)
Registration

4:30 p.m.-6:30 p.m. Mencken (East Building, 2nd Floor)
Speaker Ready Room

Wednesday, February 21, 2018

7:00 a.m.-8:00 p.m. Key Ballroom Foyer (Main Building, 2nd Floor)
Registration

8:30 a.m.-12:00 noon Latrobe (East Building, 1st Floor)
Pre-Conference Workshop #1
Introduction to the Multiphase Optimization Strategy (MOST) for Building More Effective, Efficient, Economical, and Scalable Behavioral and Biobehavioral Interventions
Sponsoring Organization: N/A

8:30 a.m.-12:00 noon Holiday Ballroom 1 (East Building, 2nd Floor)
Pre-Conference Workshop #2
PATH Study Data and Resources
Sponsoring Organizations: NIDA/FDA

8:30 a.m.-12:00 noon Holiday Ballroom 3 (East Building, 2nd Floor)
Pre-Conference Workshop #3
Alternative Careers for Individuals in Tobacco and Nicotine Research
Sponsoring Organizations: SRNT Trainee Advisory Network and SRNT Basic Science Network

8:30 a.m.-12:00 noon Johnson A-B (East Building, 1st Floor)
Pre-Conference Workshop #4
Adolescent and Young Adult Nicotine Dependence in the Contemporary Tobacco Landscape
Sponsoring Organization: SRNT Adolescent Network

8:30 a.m.-12:00 noon Holiday Ballroom 2 (East Building, 2nd Floor)
Pre-Conference Workshop #5
Innovations in Tobacco Treatment Research: New Treatments and Methodologies
Sponsoring Organization: SRNT Treatment Research Network

8:30 a.m.-12:00 noon Peale BC (East Building, 1st Floor)
Pre-Conference Workshop #6
Engaging Indigenous Communities in Tobacco Control Research
Sponsoring Organization: SRNT Health Disparities Network

8:30 a.m.-12:00 noon Ruth (East Building, 1st Floor)
Pre-Conference Workshop #7
Today's Smokers—New Challenges in a Changing Population
Sponsoring Organization: N/A

8:30 a.m.-12:00 noon Peale A (East Building, 1st Floor)
Pre-Conference Workshop #8
Sample Size Calculations for Observational and Experimental Studies in Tobacco Control
Sponsoring Organization: N/A

10:00 a.m.-10:30 a.m.

Pre-Conference Workshop Refreshment Break Locations
Holiday Ballroom 1 - North Foyer (East Building, 2nd Floor)
Lobby B - Latrobe Foyer (East Building, 1st Floor)

12:00 noon-1:15 p.m. Holiday Ballroom 6 (East Building, 2nd Floor)
Lunch Break
(All attendees must wear their pre-conference workshop badges, and have a lunch ticket to receive a boxed lunch.)

1:00 p.m.-8:00 p.m. Mencken (East Building, 2nd Floor)
Speaker Ready Room

1:00 p.m.-2:00 p.m.
Network Meetings
Adolescent Johnson A-B (East Building, 1st Floor)
Genetics Peale A (East Building, 1st Floor)
Global Research Ruth (East Building, 1st Floor)
Health Disparities Holiday Ballroom 2 (East Building, 2nd Floor)

2:15 p.m.-3:15 p.m.
Network Meetings
Basic Science Latrobe (East Building, 1st Floor)
Policy Research Peale BC (East Building, 1st Floor)
Treatment Holiday Ballroom 3 (East Building, 2nd Floor)

3:30 p.m.-4:15 p.m. Holiday Ballroom 1 (East Building, 2nd Floor)
Food and Drug Administration's Center for Tobacco Products: An Update on Regulatory Activities and Priorities
Session Chair: Mitch Zeller, JD
Speakers: Mitch Zeller, JD, Director, Center for Tobacco Products, FDA; Matthew R. Holman, PhD, Director, Office of Science, Center for Tobacco Products, FDA; and Kathy Crosby, Director, Office of Health Communications and Education, Center for Tobacco Products, FDA

4:15 p.m.-4:30 p.m.

Break

4:30 p.m.-5:15 p.m. Holiday Ballroom 1 (East Building, 2nd Floor)
Investigational Research Issues with Electronic Nicotine Delivery Systems and Other Tobacco Products: FDA Center for Tobacco Products (CTP) and FDA Center for Drug Evaluation and Research (CDER) Joint Session

Session Chair: Judith J. Prochaska, PhD, MPH, President, SRNT

Panelists: Mitch Zeller, JD, Director, Center for Tobacco Products; Janet Woodcock, MD, Director, Center for Drug Evaluation and Research; Priscilla Callahan-Lyon, MD, Deputy Director, Division of Individual Health Science, Center for Tobacco Products; Grail Sipes, JD, Director, Office of Regulatory Policy, Center for Drug Evaluation and Research

5:15 p.m.-5:30 p.m.

Break

5:30 p.m.-6:45 p.m. Key Ballroom 1-6 (Main Building, 2nd Floor)

Opening Session: Presidential Symposium

Reducing Nicotine Content in Cigarettes: A Discussion of the Evidence and Policy Implications

Session Chair: Dorothy K. Hatsukami, PhD, Masonic Cancer Center, University of Minnesota, Minneapolis, MN, USA

Presenters: Eric Donny, PhD, Wake Forest University; Dorothy K. Hatsukami, PhD, University of Minnesota; Stephen Higgins, PhD, University of Vermont; Saul Shiffman, PhD, University of Pittsburgh

Panelists: Suchitra Krishnan-Sarin, PhD, Yale University; Kurt Ribisl, PhD, University of North Carolina; Natalie Walker, PhD, University of Auckland; Mitch Zeller, JD, Center for Tobacco Products, FDA

6:45 p.m.-8:00 p.m. Holiday Ballroom 4-6 (East Building, 2nd Floor)

Opening Welcome Reception

(All attendees are welcome! Cash bar and hors d'oeuvres)

Thursday, February 22, 2018

7:00 a.m.-5:00 p.m. Mencken (East Building, 2nd Floor)

Speaker Ready Room

7:15 a.m.-8:15 a.m. Paca (Main Building, 3rd Floor)

Health Disparities Network Breakfast Meeting

7:15 a.m.-5:00 p.m. Key Ballroom Foyer (Main Building, 2nd Floor)

Registration

8:30 a.m.-10:00 a.m. Key Ballroom 1-6 (Main Building, 2nd Floor)

Welcome/Awards

Pre-Clinical/Basic Science Theme Plenary

Bringing Precision Medicine to Smoking Cessation

Laura Jean Bierut, MD, Alumni Endowed Professor of Psychiatry, Health and Behavior Research Center, Washington University School of Medicine, St. Louis, MO, USA

9:30 a.m.-3:30 p.m. Key Ballroom, South Foyer (Main Building, 2nd Floor)

Exhibits Open

10:00 a.m.-10:30 a.m. Key Ballroom Foyer (Main Building, 2nd Floor)

Exhibitor Time

Refreshment Break

10:30 a.m.-12:00 noon Key Ballroom 1-6 (Main Building, 2nd Floor)

Podium Presentation 1: Symposium 1

Health Effects of Electronic Cigarettes and Recommendations for Research: The 2018 Report of the National Academies of Science, Engineering, and Medicine for the FDA Center for Tobacco Products

Audience: P, C, PH/E, C

10:30 a.m.-12:00 noon Holiday Ballroom 4 (East Building, 2nd Floor)

Podium Presentation 1: Symposium 2

Communicating Science to Policymakers

Audience: P

10:30 a.m.-12:00 noon Peale ABC (East Building, 1st Floor)

Podium Presentation 1: Symposium 3

The Impact of Waterpipe Constituents, Compounds, and Design Features on Toxicity: A Call for Regulatory Action

Audience: PH/E

10:30 a.m.-12:00 noon Holiday Ballroom 5 (East Building, 2nd Floor)

Podium Presentation 1: Symposium 4

Reaching, Engaging, and Intervening with Behavioral Health Smokers

Audience: PH/E, C

10:30 a.m.-12:00 noon Ruth (East Building, 1st Floor)

Podium Presentation 1: Symposium 5

Understanding Smoking Patterns, Stigma, and Smoking Cessation Treatment Engagement in the Sexual and Gender Minority Population

Audience: P

10:30 a.m.-12:00 noon Johnson A-B (East Building, 1st Floor)

Podium Presentation 1: Symposium 6

Translating Genetic Research Into Clinical Practice for Precision Medicine Tobacco Treatment-SRNT Genetics Network

Audience: PC

10:30 a.m.-12:00 noon Holiday Ballroom 2 (East Building, 2nd Floor)

Podium Presentation 1: Paper Session 1

Expanding Tobacco-Free Policies

Audience: PH/E, P

10:30 a.m.-12:00 noon Holiday Ballroom 3 (East Building, 2nd Floor)

Podium Presentation 1: Paper Session 2

Tobacco Product Warnings: Research to Policy

Audience: PH/E, P

10:30 a.m.-12:00 noon Holiday Ballroom 1 (East Building, 2nd Floor)

Podium Presentation 1: Paper Session 3

Contextual, Behavioral, and Demographic Predictors of Smoking Cessation Successes

Audience: C, PH/E

10:30 a.m.-12:00 noon Holiday Ballroom 6 (East Building, 2nd Floor)

Podium Presentation 1: Paper Session 4

Strategies for Optimizing and Personalizing Smoking Treatment

Audience: C

12:00 noon-12:15 p.m.

Break

12:15 p.m.-1:30 p.m. Key Ballroom 7-12 (Main Building, 2nd Floor)

Poster Session 1: Pre-Clinical and Policy

12:15 p.m.-1:30 p.m. Key Ballroom Foyer (Main Building, 2nd Floor)

Lunch Break

Boxed lunches will be distributed starting at 12:00 noon.

Plan to attend Poster Session 1 while eating your boxed lunch!

1:30 p.m.- 2:30 p.m. Key Ballroom 1-6 (Main Building, 2nd Floor)

Public Health Theme Keynote Lecture

Session Chair: Judith J. Prochaska, PhD, MPH

VADM Jerome M. Adams, MD, MPH

United States Surgeon General, Washington, DC, USA

2:30 p.m.- 3:00 p.m. Key Ballroom Foyer (Main Building, 2nd Floor)

Exhibitor Time

Refreshment Break

3:00 p.m.-4:30 p.m. Holiday Ballroom 5 (East Building, 2nd Floor)

Podium Presentation 2: Symposium 7

Exploring Use and Preference of E-Cigarette Flavors Among Adolescents, Young Adults, and Adults

Audience: PH/E

3:00 p.m.-4:30 p.m. Johnson A-B (East Building, 1st Floor)

Podium Presentation 2: Symposium 8

Tobacco Retail Outlets: Inside and Out

Audience: PH/E

3:00 p.m.-4:30 p.m. Ruth (East Building, 1st Floor)

Podium Presentation 2: Symposium 9

Social Norms as a Predictor of Smoking and E-Cigarette Use

Audience: P

3:00 p.m.-4:30 p.m. Peale ABC (East Building, 1st Floor)

Podium Presentation 2: Symposium 10

Leveraging User Data From Online Cessation Interventions:
Novel Analytic Approaches to Improve Effectiveness and Reach

Audience: C

3:00 p.m.-4:30 p.m. Holiday Ballroom 1 (East Building, 2nd Floor)

Podium Presentation 2: Symposium 11

Laboratory-Based Clinical Studies to Inform Tobacco Cessation
Interventions Among Individuals With Psychiatric Conditions

Audience: C

3:00 p.m.-4:30 p.m. Holiday Ballroom 3 (East Building, 2nd Floor)

Podium Presentation 2: Paper Session 5

Social and Environmental Factors for Tobacco Use Among Special
Populations

Audience: PC, C, PH/E

3:00 p.m.-4:30 p.m. Holiday Ballroom 2 (East Building, 2nd Floor)

Podium Presentation 2: Paper Session 6

Tobacco Regulatory Science and Policy Development

Audience: P, PH/E

3:00 p.m.-4:30 p.m. Key Ballroom 1-6 (Main Building, 2nd Floor)

Podium Presentation 2: Paper Session 7

Electronic Nicotine Delivery Systems: Initiation and Subsequent
Smoking Initiation

Audience: PH/E, PC

3:00 p.m.-4:30 p.m. Holiday Ballroom 6 (East Building, 2nd Floor)

Podium Presentation 2: Paper Session 8

Electronic Nicotine Delivery System: Oxidant and Aldehyde
Emissions and Exposure

Audience: PC, C, P

3:00 p.m.-4:30 p.m. Holiday Ballroom 4 (East Building, 2nd Floor)

Podium Presentation 2: Paper Session 9

Comprehensive Assessment of Impact of Flavors: Constituents to
Perceptions

Audience: PC, PH/E, P

4:30 p.m.-4:45 p.m.

Break

4:45 p.m.-6:00 p.m. Key Ballroom 7-12 (Main Building, 2nd Floor)

Poster Session 2: Epidemiology and Public Health (Session 1)

6:30 p.m.-7:30 p.m. East Foyer (Main Building, 3rd Floor)

**Trainee Network Mentoring Roundtables - Check-in at
Registration Table**

7:30 p.m.-9:00 p.m. Paca (Main Building, 3rd Floor)

Trainee Network Mixer

Friday, February 23, 2018

7:15 a.m.-5:00 p.m. . . . Key Ballroom Foyer (Main Building, 2nd Floor)

Registration

7:30 a.m.-5:00 p.m. Mencken (East Building, 2nd Floor)

Speaker Ready Room

7:30 a.m.-8:15 a.m. Holiday Ballroom 1 (East Building, 2nd Floor)

SRNT Members Meeting

(All members are welcome to attend.)

8:30 a.m.-9:30 a.m. . . . Key Ballroom 1-6 (Main Building, 2nd Floor)

Clinical Theme Plenary Lecture

Technology and Smoking Cessation: Is it all Smoke and Mirrors?

Session Chair: Chris Bullen, MBChB, DObst, DCH, MPH, PhD,
FAFPHM, FNZCPHM

Robyn Whittaker, MBChB, MPH, PhD, FNZCPHM, Associate
Professor, Clinical Director of Innovation, Waitemata District
Health Board and University of Auckland, Auckland, New
Zealand

9:30 a.m.-4:00 p.m. . . . Key Ballroom, South Foyer (Main Building, 2nd Floor)

Exhibits Open

9:30 a.m.- 10:00 a.m. Key Ballroom Foyer (Main Building, 2nd Floor)

Exhibitor Time

Refreshment Break

10:00 a.m.-11:30 a.m. . . . Key Ballroom 1-6 (Main Building, 2nd Floor)

Podium Presentation 3: Symposium 12

Smokers Who Vape and Vapers Who Smoke—Public Health
Implications of Dual Use of Tobacco and Electronic Cigarettes

Audience: PH/E

10:00 a.m.-11:30 a.m. . . . Holiday Ballroom 5 (East Building, 2nd Floor)

Podium Presentation 3: Symposium 13

Cooling Agents, Flavors, and Nicotine: Additives or Drugs?

Audience: PC, C, PH/E

10:00 a.m.-11:30 a.m. Johnson A-B (East Building, 1st Floor)

Podium Presentation 3: Symposium 14

Vulnerabilities to Tobacco Product Use and Strategies to Reduce
Use Among Women of Reproductive Age

Audience: PH/E

10:00 a.m.-11:30 a.m. . . . Holiday Ballroom 2 (East Building, 2nd Floor)

Podium Presentation 3: Symposium 15

Cutting-Edge Mixed Methods Research on Marijuana and
Tobacco Co-Use: Causes, Correlates, and Consequences Across
the Age Spectrum

Audience: PH/E

10:00 a.m.-11:30 a.m. . . . Holiday Ballroom 4 (East Building, 2nd Floor)

Podium Presentation 3: Paper Session 10

Emerging Topics in Reduced Nicotine Tobacco Products

Audience: PC, C, PH/E

10:00 a.m.-11:30 a.m. . . . Holiday Ballroom 1 (East Building, 2nd Floor)

Podium Presentation 3: Paper Session 11

Health Impact of Tobacco Products

Audience: PC, C, PH/E

10:00 a.m.-11:30 a.m. Ruth (East Building, 1st Floor)

Podium Presentation 3: Paper Session 12

Impact of Economic Tobacco Control Policy Interventions

Audience: P, PH/E

10:00 a.m.-11:30 a.m. Peale ABC (East Building, 1st Floor)

Podium Presentation 3: Paper Session 13

Smoking Cessation Interventions for Patients With Medical and Psychiatric Co-Morbidities

Audience: C

10:00 a.m.-11:30 a.m. Holiday Ballroom 6 (East Building, 2nd Floor)

Podium Presentation 3: Paper Session 14

Trajectories of Multiple Tobacco Product Use

Audience: PH/E, C

10:00 a.m.-11:30 a.m. Holiday Ballroom 3 (East Building, 2nd Floor)

Podium Presentation 3: Paper Session 15

Tobacco and Substance Use Disorder Comorbidity

Audience: C, PH/E, P

11:30 a.m.-11:45 a.m.

Break

11:45 a.m.-1:00 p.m. Key Ballroom 7-12 (Main Building, 2nd Floor)

Poster Session 3: Clinical

11:45 a.m.-1:00 p.m. Key Ballroom Foyer (Main Building, 2nd Floor)

Lunch Break

Boxed lunches will be distributed starting at 11:30 a.m.

Plan to attend Poster Session 3 while eating your boxed lunch!

11:45 a.m.-1:00 p.m. Calloway AB (East Building, 2nd Floor)

Past President Luncheon (by invitation only)

1:00 p.m.-1:30 p.m. Key Ballroom 1-6 (Main Building, 2nd Floor)

Jarvik-Russell New Investigator Award Paper Session

Developing Research to Inform Tobacco-Related Policy

Session Chair: Thomas R. Kirchner, PhD

Andrea Villanti, PhD, MPH, Associate Professor, Vermont Center on Behavior and Health, Department of Psychiatry, University of Vermont, Burlington, VT USA

1:30 p.m.-2:30 p.m. Key Ballroom 1-6 (Main Building, 2nd Floor)

Special Symposium: The Latest from the PATH Study

Selected Tobacco Use 3 Wave Transitions and E-Cigarette and Biomarker Data

Session Chairs: Heather Kimmel, PhD, National Institute on Drug Abuse, NIH; Nicolette Borek, PhD, Center for Tobacco Products, FDA

Presenters: Andrew Hyland, PhD, Roswell Park Comprehensive Cancer Center; Blair Coleman, PhD, Center for Tobacco Products, FDA; Jennifer Pearson, PhD, MPH, University of Nevada, Reno; Maciej Goniewicz, PhD, PharmD, Roswell Park Comprehensive Cancer Center

2:30 p.m.-2:45 p.m. Key Ballroom Foyer (Main Building, 2nd Floor)

Exhibit Time (Last Day)

Refreshment Break

2:45 p.m.-3:45 p.m. Key Ballroom 1-6 (Main Building, 2nd Floor)

Policy Theme Keynote Lecture: An Update on FDA's

Comprehensive Plan on Tobacco and Nicotine Regulation

Session Chair: Mitch Zeller, JD

Scott Gottlieb, MD, Commissioner of Food and Drugs, United States Food and Drug Administration, Silver Spring, MD, USA

3:45 p.m.-4:00 p.m. Key Ballroom Foyer (Main Building, 2nd Floor)

Exhibit Time (Last Day - last scheduled time)

Refreshment Break

4:00 p.m.-5:30 p.m. Holiday Ballroom 4 (East Building, 2nd Floor)

Podium Presentation 4: Symposium 16

Can We Clear the Smoke in Patients with Mental Illness?

Audience: C

4:00 p.m.-5:30 p.m. Holiday Ballroom 1 (East Building, 2nd Floor)

Podium Presentation 4: Symposium 17

Menthol Cigarettes: What Do Bans Achieve?

Audience: P

4:00 p.m.-5:30 p.m. Peale ABC (East Building, 1st Floor)

Podium Presentation 4: Symposium 18

Emerging Evidence on the Toxicity of Non-Cigarette Tobacco Products

Audience: PC, PH/E

4:00 p.m.-5:30 p.m. Ruth (East Building, 1st Floor)

Podium Presentation 4: Symposium 19

Smokefree Multi-Unit Housing: The Next Frontier for Protecting Vulnerable Populations

Audience: PH/E, P

4:00 p.m.-5:30 p.m. Holiday Ballroom 2 (East Building, 2nd Floor)

Podium Presentation 4: Symposium 20

ENDS on Social Media: From Shaping ENDS Use to Quit-Smoking Intervention

Audience: PH/E

4:00 p.m.-5:30 p.m. Holiday Ballroom 3 (East Building, 2nd Floor)

Podium Presentation 4: Symposium 21

Transgenerational Effects of Parental Nicotine and Tobacco Exposure on Emotion, Cognition, and Reward

Audience: PC

4:00 p.m.-5:30 p.m. Holiday Ballroom 6 (East Building, 2nd Floor)

Podium Presentation 4: Symposium 22

Cytisine for Smoking Cessation: Filling in the Gaps

Audience: C

4:00 p.m.-5:30 p.m. Johnson A-B (East Building, 1st Floor)

Podium Presentation 4: Paper Session 16

Social Media Exposure and Intervention Research

Audience: PH/E, P, C

4:00 p.m.-5:30 p.m. Holiday Ballroom 5 (East Building, 2nd Floor)

Podium Presentation 4: Paper Session 17

Smoking and Mental Health: Epidemiology, Preclinical, and Clinical Insights

Audience: PH/E, PC, C

4:00 p.m.-5:30 p.m. Key Ballroom 1-6 (Main Building, 2nd Floor)

Podium Presentation 4: Paper Session 18

Electronic Nicotine Delivery Systems: E-Liquid Characteristics and Vaping Behavior

Audience: C, PC

5:30 p.m.-5:45 p.m.

Break

5:45 p.m.-7:00 p.m. Key Ballroom 7-12 (Main Building, 2nd Floor)

Poster Session 4: Epidemiology and Public Health (Session 2)

7:00 p.m.-7:15 p.m.

Break

7:15 p.m.-8:15 p.m. Key Ballroom 1-6 (Main Building, 2nd Floor)

Funding Sources Panel: The Role and Implications of the Funder of Tobacco and Nicotine Research

Session Chair: Thomas J. Glynn, PhD, Stanford University
Panel Speakers: A. Eden Evins, MD, MPH, Harvard Medical School and Massachusetts General Hospital; Joanna Cohen, PhD, Johns Hopkins University; Dave Dobbins, JD, Truth Initiative; Laurent Huber, MS, Executive Director, Action on Smoking or Health, US; and Saul Shiffman, PhD, University of Pittsburgh and Pinney Associates

Saturday, February 24, 2018

8:00 a.m.-12:30 p.m. Key Ballroom Foyer (Main Building, 2nd Floor)

Registration

8:00 a.m.-11:00 a.m. Mencken (East Building, 2nd Floor)

Speaker Ready Room

8:30 a.m.-10:00 a.m. Peale ABC (East Building, 1st Floor)

Podium Presentation 5: Symposium 23

Across the Spectrum: Diversity of Tobacco Product Use
Audience: PC

8:30 a.m.-10:00 a.m. Holiday Ballroom 2 (East Building, 2nd Floor)

Podium Presentation 5: Symposium 24

Deconstructing the Natural Cigarette Narrative—Analyzing
Current Evidence to Inform Future Policy
Audience: C

8:30 a.m.-10:00 a.m. Holiday Ballroom 3 (East Building, 2nd Floor)

Podium Presentation 5: Symposium 25

A Symposium on Cigars: Measurement Challenges,
Harmonization, and Statistical Techniques for Aggregating
Diverse Data Sets, and Indicators of Cigar Toxicity
Audience: PH/E

8:30 a.m.-10:00 a.m. Holiday Ballroom 4 (East Building, 2nd Floor)

Podium Presentation 5: Symposium 26

Using MHealth Interventions to Reach Vulnerable Populations
With Tobacco Cessation Resources
Audience: PH/E

8:30 a.m.-10:00 a.m. Johnson A-B (East Building, 1st Floor)

Podium Presentation 5: Symposium 27

Tobacco Perceptions in Vulnerable Populations
Audience: PH/E

8:30 a.m.-10:00 a.m. Holiday Ballroom 6 (East Building, 2nd Floor)

Podium Presentation 5: Paper Session 19

Addiction/Abuse Liability of Tobacco Products
Audience: PH/E, C, PC

8:30 a.m.-10:00 a.m. Ruth (East Building, 1st Floor)

Podium Presentation 5: Paper Session 20

Tobacco Use Among LGBT
Audience: P, PH/E, C

8:30 a.m.-10:00 a.m. Holiday Ballroom 5 (East Building, 2nd Floor)

Podium Presentation 5: Paper Session 21

Global Tobacco Control Policy Interventions
Audience: P

8:30 a.m.-10:00 a.m. Holiday Ballroom 1 (East Building, 2nd Floor)

Podium Presentation 5: Paper Session 22

Preclinical Studies to Inform Tobacco Use Treatment
Audience: PC, C

8:30 a.m.-10:00 a.m. Key Ballroom 1-6 (Main Building, 2nd Floor)

Podium Presentation 5: Paper Session 23

Toxicology of Alternative Nicotine Delivery Systems
Audience: PC, PH/E

10:00 a.m.-10:30 a.m. Key Ballroom Foyer (Main Building, 2nd Floor)

Refreshment Break

10:00 a.m.-10:30 a.m. Stone (Main Building, 3rd Floor)

Meet-the-Editor Session

Editor-in-Chief: Marcus Munafò, PhD, *Nicotine and Tobacco Research Journal*

10:30 a.m.-12:00 noon Holiday Ballroom 1 (East Building, 2nd Floor)

Podium Presentation 6: Symposium 28

Reaching Adolescents With Digital Smoking Cessation
Interventions
Audience: PH/E

10:30 a.m.-12:00 noon Holiday Ballroom 3 (East Building, 2nd Floor)

Podium Presentation 6: Symposium 29

Progress and Challenges Related to Eliminating Tobacco Related
Health Disparities in the United States
Audience: PH/E

10:30 a.m.-12:00 noon Peale ABC (East Building, 1st Floor)

Podium Presentation 6: Symposium 30

Demand Modeling to Inform Tobacco Regulatory Science:
Transdisciplinary and International Perspectives
Audience: P

10:30 a.m.-12:00 noon Key Ballroom 1-6 (Main Building, 2nd Floor)

Podium Presentation 6: Symposium 31

Eagles—The Second Generation: Comparing the Safety and
Efficacy of the 1st-Line Pharmacotherapies in Smokers With
Psychiatric Disorders
Audience: C

10:30 a.m.-12:00 noon Holiday Ballroom 2 (East Building, 2nd Floor)

Podium Presentation 6: Symposium 32

Tobacco Marketing and Vulnerable Populations
Audience: PH/E, P

10:30 a.m.-12:00 noon Holiday Ballroom 4 (East Building, 2nd Floor)

Podium Presentation 6: Paper Session 24

Impact of Point-of-Sale Exposure
Audience: PH/E, P

10:30 a.m.-12:00 noon Ruth (East Building, 1st Floor)

Podium Presentation 6: Paper Session 25

Addressing Tobacco-Related Risks in Indigenous Population
Audience: PH/E

10:30 a.m.-12:00 noon Johnson A-B (East Building, 1st Floor)

Podium Presentation 6: Paper Session 26

Tobacco-Control Campaigns: Research to Evaluation
Audience: PH/E, P

10:30 a.m.-12:00 noon Holiday Ballroom 6 (East Building, 2nd Floor)

Podium Presentation 6: Paper Session 27

Developments in Tobacco Use Exposure Assessment With
Biomarkers
Audience: PH/E, PC

10:30 a.m.-12:00 noon Holiday Ballroom 5 (East Building, 2nd Floor)

Podium Presentation 6: Paper Session 28

Pregnancy: Translational Research
Audience: PC, C

12:00 noon.-12:15 p.m.

Break

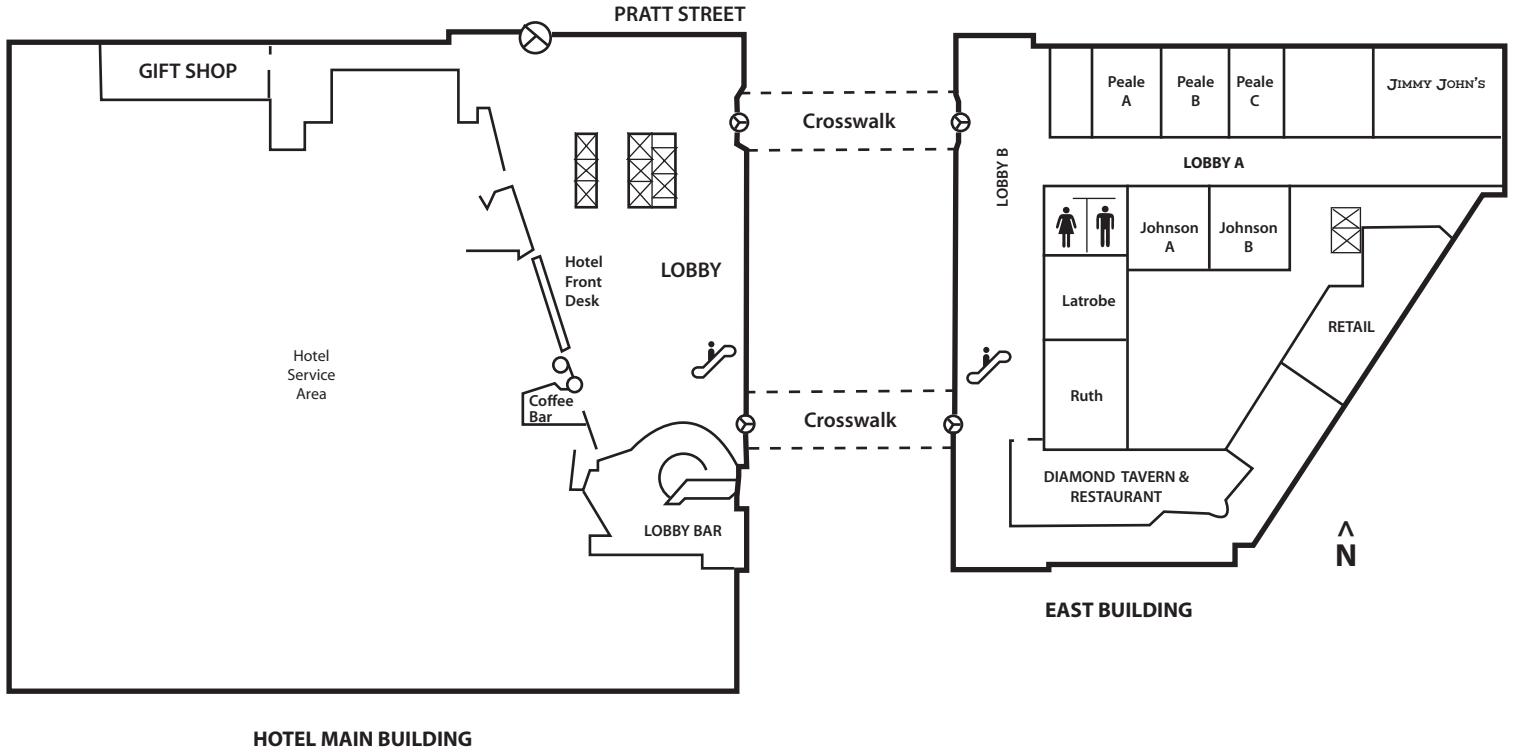
12:15 p.m.-1:30 p.m. Key Ballroom 7-12 (Main Building, 2nd Floor)

Poster Session 5: Rapid Response (Late-Breaking)

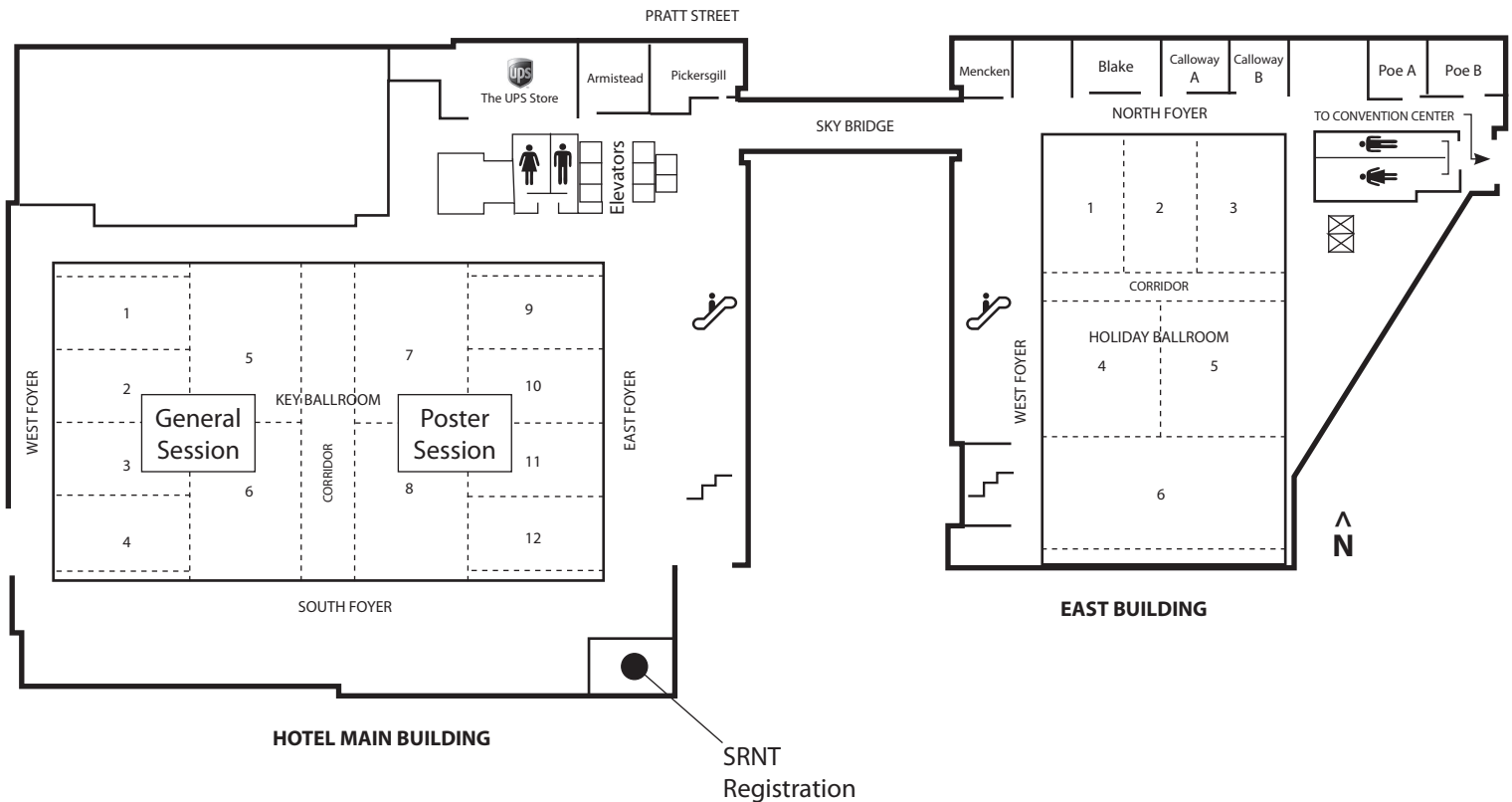
Audience Key:

PC: Pre-Clinical; C: Clinical; PH/E: Public Health/Epidemiology; P: Policy

Hilton Baltimore Hotel • First Floor



Hilton Baltimore Hotel • Second Floor



Hilton Baltimore Hotel • Third Floor

