





**PROFESSIONAL ETHICS**  
For Engineers

---

---

---

---

---

---

---

---




---

---

---

---

---

---

---


---

**Ethics Codes Are Dynamic**

- Reevaluated when ethical dilemmas arise
- Must be applicable
- Change over the years:

<p>Early Years</p> <ul style="list-style-type: none"> <li>• Advertising</li> <li>• Competitive bidding</li> <li>• Self promotion</li> </ul>	<p>Today</p> <ul style="list-style-type: none"> <li>• Signing and sealing work</li> <li>• Whistleblowing</li> <li>• Conflict of interests</li> </ul>
---	--

Obligation to protect PUBLIC HEALTH AND SAFETY




---

---

---

---

---

---

---

---



---

---

---

---

---

---

---

---



---

---

---

---

---

---

---

---



---

---

---

---

---

---

---

---



---

---

---

---

---

---

---

---



---

---

---

---

---

---

---

---



---

---

---

---

---

---


---

---

**Tests for Use**

**Consider:**

- The Golden Rule
- No special gains
- News headline



---

---

---

---

---

---

---

---



**We Can Ask Ourselves...**

- Long Term Impact?
- Right Thing to do?
- Reflection of My Organization's Values?

---

---

---

---

---

---

---

---

**For Advice:**

**Arthur Schwartz**, Legal Counsel  
National Society of Professional Engineers  
aschwatz@nspe.org

**Review Cases:**

- [www.nspe.org](http://www.nspe.org) - National Society of Professional Engineers
- [www.niee.org](http://www.niee.org) - National Institute of Engineering Ethics



---

---

---

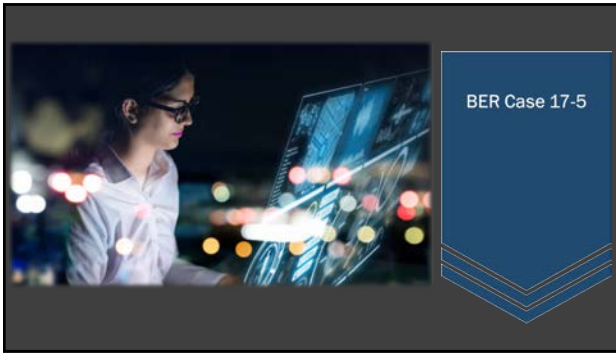
---

---

---

---

---



---

---

---

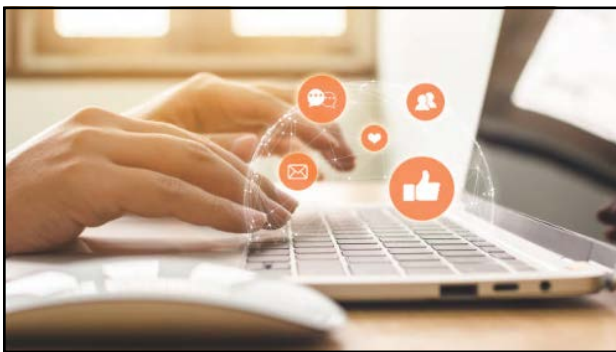
---

---

---

---

---



---

---

---

---

---

---

---

---



---

---

---

---

---

---

---

---

**BER Conclusions 17-5**

- It is ethical
- Must be accurate and complete, limit to areas of competence, conform with state licensing requirements
- May not reveal sensitive information without consent of client/employer
- Act with care and discretion – an extension of their own professional activities

**NSPE Code of Ethics  
References**

II.1.C	II.3.b	III.2.c
II.3	II.3.c	III.3.a
II.3.a	III.2.a	III.8.a

---

---

---

---

---

---

---

---



**BER Case 17-10**

---

---

---

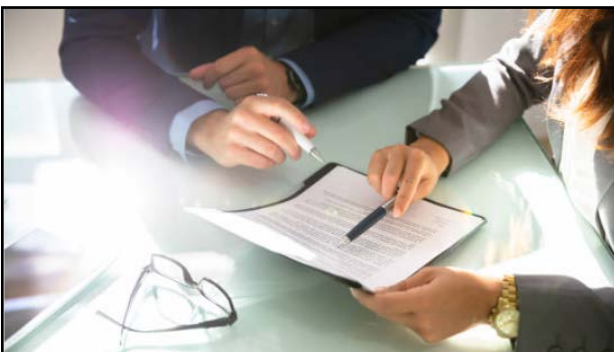
---

---

---

---

---



---

---

---

---

---

---

---

---



---

---

---

---

---

---

---

---



---

---

---

---

---

---

---

---

**BER Case 17-10**

Would it be ethical for Salomon to serve as an expert for both the insurance company and the deceased employee's estate?

---

---

---

---

---

---

---

---

<b>BER Conclusions 17-10</b>			
<ul style="list-style-type: none"><li>• Not ethical</li><li>• Representing multiple and adverse parties in litigation raises potential for a serious conflict of interest</li><li>• Could be breach of confidentiality</li></ul>			
<b>NSPE Code of Ethics References</b>	I.4	II.4.a	III.4.b
	II.1.C	II.4.b	
	II.4	III.4	

---

---

---

---

---

---

---

---



BER Case 17-2/12

---

---

---

---

---

---

---

---



---

---

---

---

---

---

---

---



---

---

---

---

---

---

---

---



---

---

---

---

---

---

---

---



---

---

---

---

---

---

---

---

**BER Conclusions 17-2/12**

- In the future, can he get back into services he performed at LPE?
- Can he contact his 15-year client, the relationship established while at LPE?
- Can he list his work on the new company's website?

<b>NSPE Code of Ethics References</b>	I.4	III.1.e
	I.6	III.9
	II.4	III.9.a, b, d

---

---

---

---

---

---

---

---

**BER Conclusions 17-2/12**

- Must not engage in any misleading or deceptive actions
- Website must make clear that the work was performed under the auspices of LPE
- Must not to use any proprietary information, intellectual property, etc. from LPE

<b>NSPE Code of Ethics References</b>	I.4	III.1.e
	I.6	III.9
	II.4	III.9.a, b, d

---

---

---

---

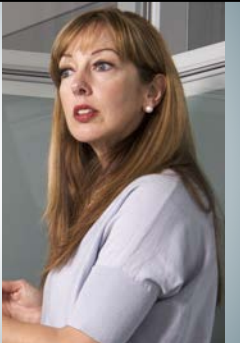
---

---

---

---

Case 16-8



---

---

---

---

---

---

---

---



---

---

---

---

---

---

---

---



---

---

---

---

---

---

---

---



---

---

---

---

---

---

---

---



---

---

---

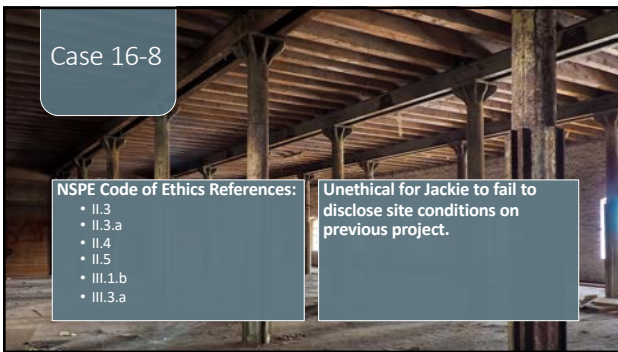
---

---

---

---

---



---

---

---

---

---

---

---

---



---

---

---

---

---

---

---

---