

Presiding Over Pioneering Partnerships

Collaboration and Community

Texas General Land Office • Commissioner Dawn Buckingham, M.D.
Community Development & Revitalization





Shonda Mace
Manager | Studies, Research, & Development



Molly Ross, EIT, CFM
H&H Engineer | USACE Galveston District



Stephanie Castillo, PE, PMP, CFM
Project Manager | WSP



Agenda

- Texas General Land Office
- River Basin Flood Studies (RBFS)
- Collaboration and Community
- Join us!

Texas General Land Office
Commissioner Dawn Buckingham, M.D.



Texas General Land Office

Community Development & Revitalization (CDR)

- Veteran Benefits
 - Manage State Lands
 - Operate the Alamo
 - Fund Texas Public Education
-
- **Help Texans recovering from natural disasters**

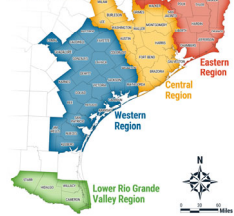


Texas General Land Office
Commissioner Dawn Buckingham, M.D.



4

FLOOD STUDY REGIONS



Planning Mission

Mission Statement:

GLO-CDR Planning team designs and oversees planning studies to collect, analyze, and communicate disaster-related data to assist decision makers to better protect Texans from future disasters.

GLO-CDR Planning team empowers decision makers with the information they want.

Texas General Land Office
Commissioner Dawn Buckingham, M.D.



5

RBFS Focus



FUNDING

How can we bring more mitigation funds to the state?



MODELING

Is it possible to create models that benefits the entire region, but can also be upgraded for high-risk communities?



PARTNERING

How do we complement current H&H efforts from partner agencies and create scalable regional models?

Texas General Land Office
Commissioner Dawn Buckingham, M.D.



6

Phase 3: Engineering Modeling

Technical Services and Products

- Baseline Modeling
 - Use H&H Modeling to evaluate potential mitigation projects
- Alternative Analysis SOP
 - Use H&H Modeling to evaluate potential mitigation projects
- Hot Spot SOP
 - High level economic analysis
 - Refine previous risk assessment performed in Phase 1 and Phas2



Texas General Land Office
Commissioner Dawn Buckingham, M.D.



7



8



9

Partners





USACE & GLO Coordination



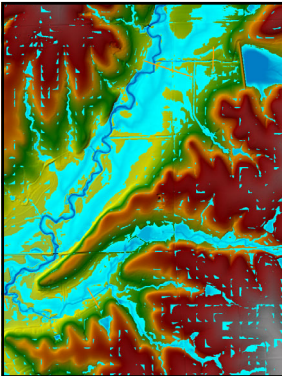
USACE, GLO, and engineering firms saw value in:



- Navigating coastal research and developments
- Centers of Expertise and lessons learned from National Studies

Texas General Land Office
Commissioner Dawn Buckingham, M.D.





USACE & GLO Coordination

USACE, GLO, and engineering firms worked together to:




- Create standard operating procedures for RBFS H&H models
- Ideate and synthesize modeling enhancements to make advanced modeling features more affordable to communities

Texas General Land Office
Commissioner Dawn Buckingham, M.D.





Outreach & Governance Leveling Up




 Texas General Land Office
 @glotx
 @txglo

Texas General Land Office • Commissioner Dawn Buckingham, M.D.



QUESTIONS?

cdi@recovery.texas.gov
1-844-893-8937

 Texas General Land Office
 @glotx
 @txglo

Texas General Land Office • Commissioner Dawn Buckingham, M.D.
