

Constraints and design challenges for runoff storage mitigation on TxDOT project

March 2025

Florian Baltoi P.E.



Contents

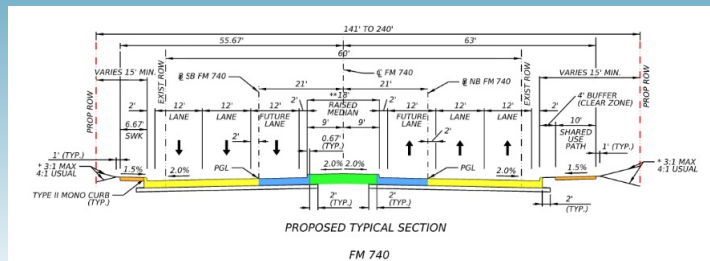
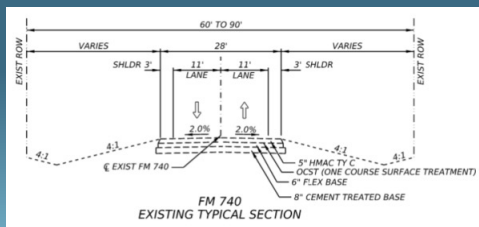
1. Project Location
2. Proposed Project
3. Existing Drainage Conditions
4. Constraints for Proposed Drainage Design
5. Project Impact on Existing Drainage Conditions
6. Challenges for Proposed Drainage Design
7. Proposed Drainage Design Solution
8. Next Steps
9. Questions



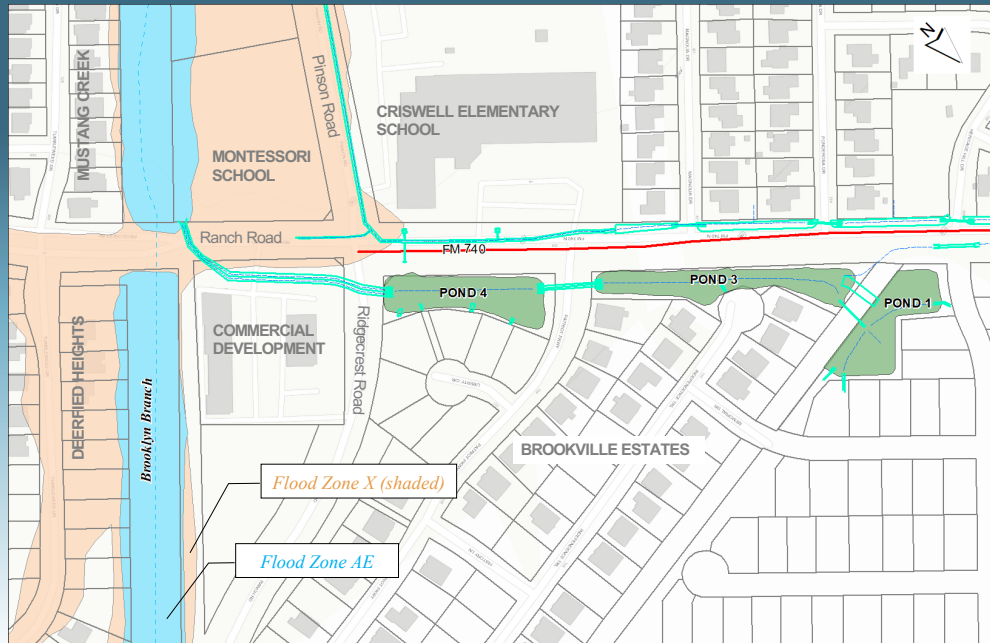
1. Project Location



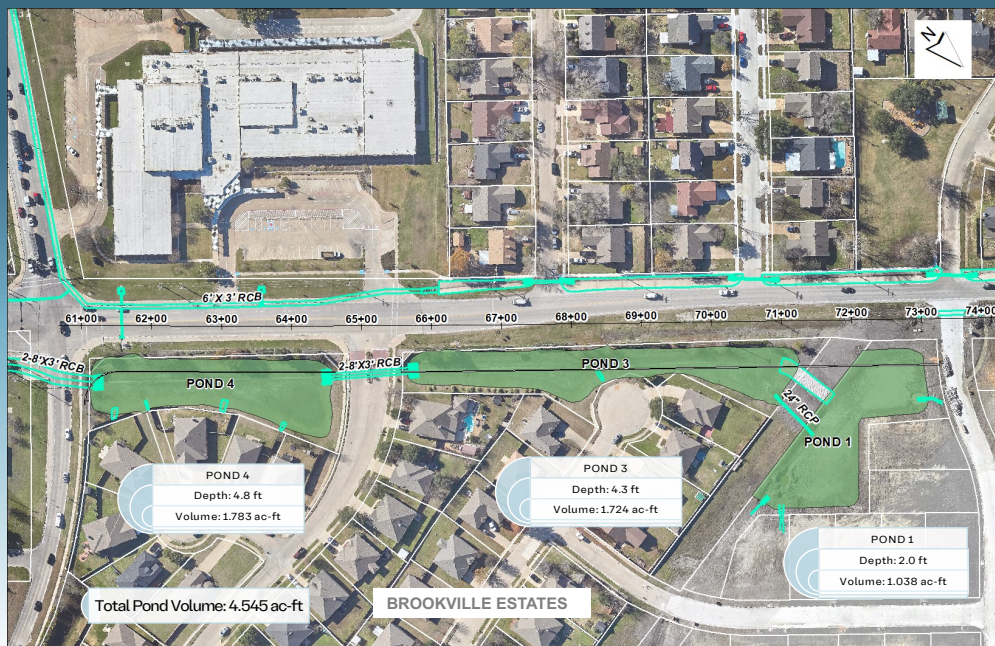
2. Proposed Project



3. Existing Drainage Conditions



3. Existing Drainage Conditions



3. Existing Drainage Conditions



3. Existing Drainage Conditions

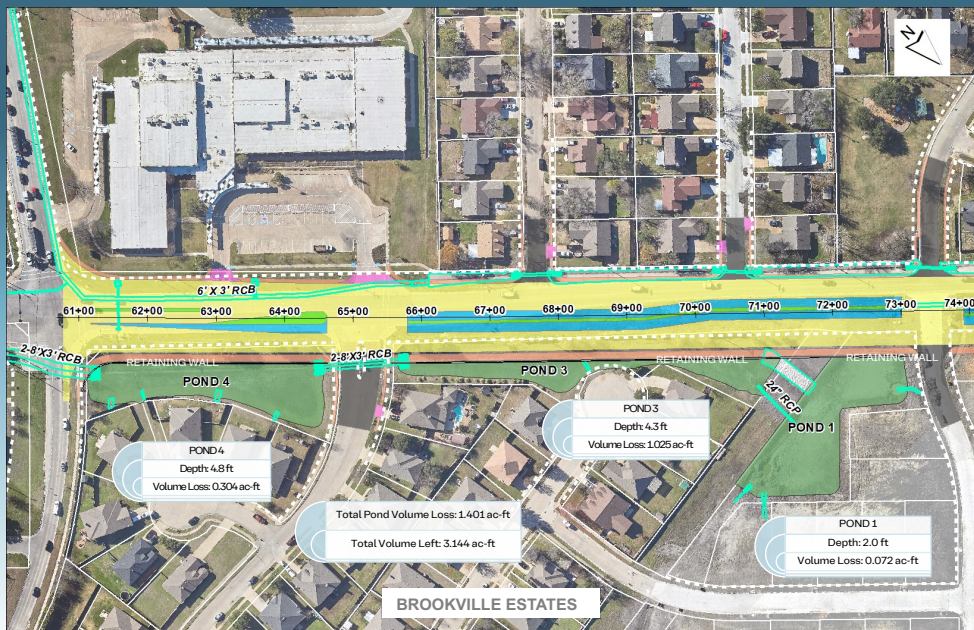


4. Constraints for Proposed Drainage Design

- a. Roadway Design
- b. HOA Access Easements
- c. Private Properties
- d. Detention Ponds for the Brookville Estates
- e. Runoff Discharge Rates from Detention Ponds
- f. Subsurface Utilities



5. Project Impact on Existing Drainage Conditions

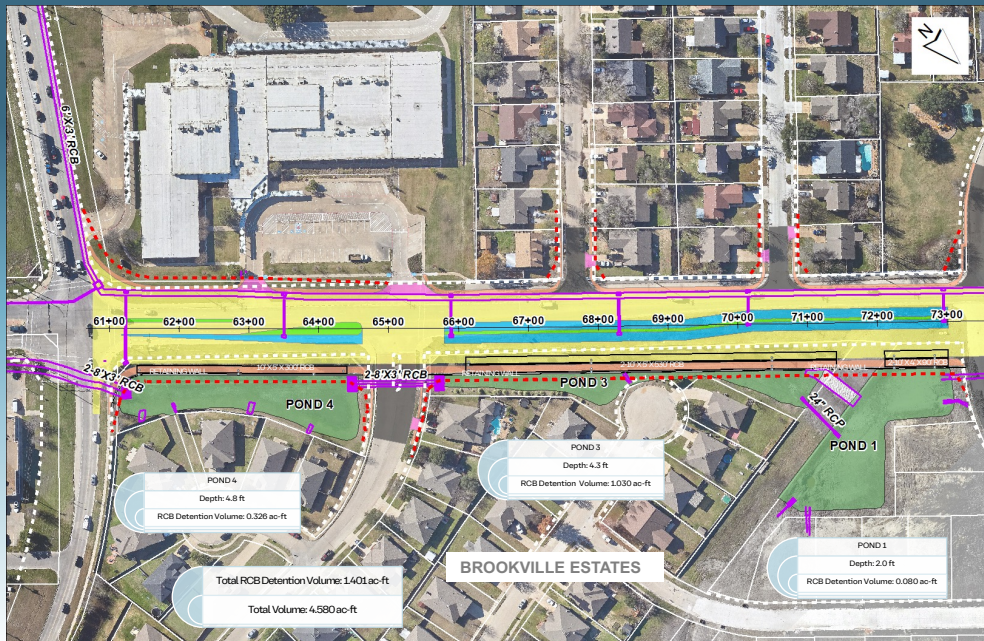


6. Challenges for Proposed Drainage Design

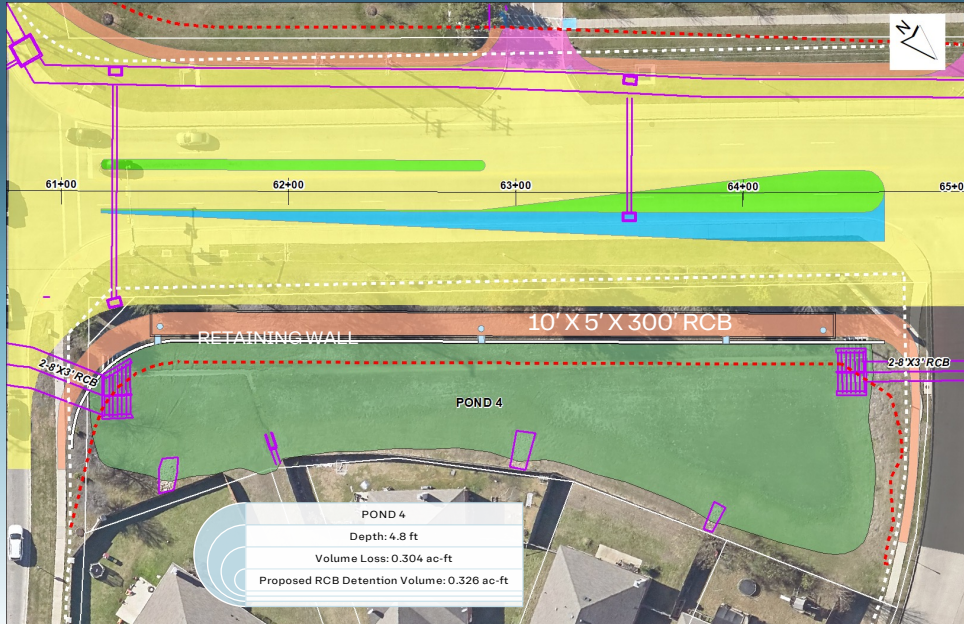
- a. Significant Encroachment into Detention Ponds
- b. Proposed Storm Drain Design
- c. Proposed Roadway Vertical and Horizontal Geometric Design
- d. Location of Subsurface Utilities



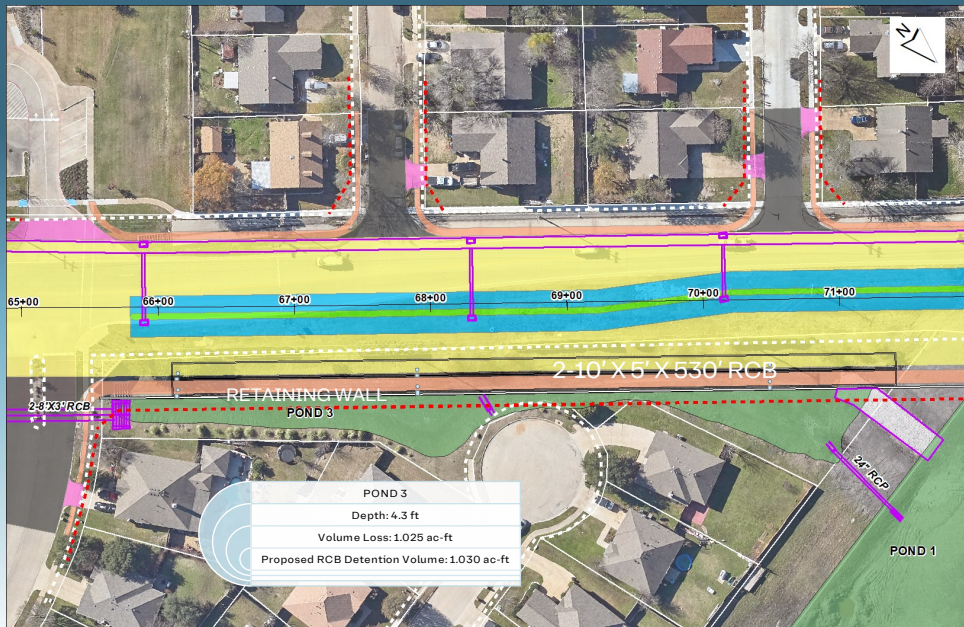
7. Proposed Drainage Design Solution



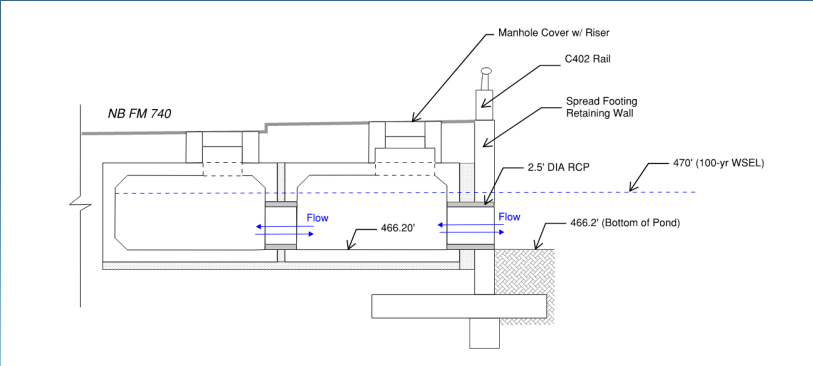
7. Proposed Drainage Design Solution



7. Proposed Drainage Design Solution



7. Proposed Drainage Design Solution



Detail for Underground Detention Storage Structure for POND 3



8. Next Steps



9. Questions ?



or