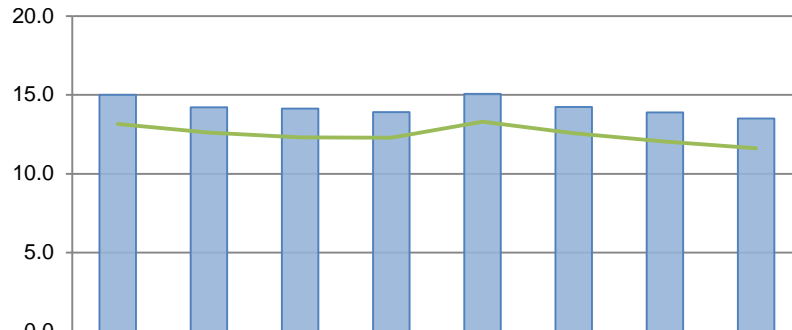


Statewide Safe Transitions Measures

Massachusetts

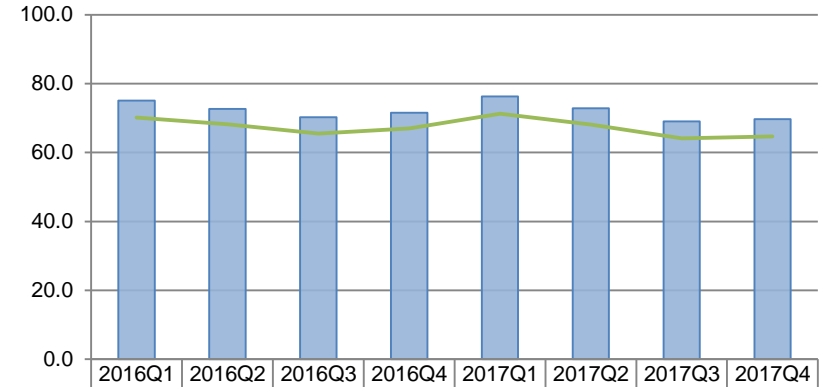
30 Day All Cause Readmissions per 1,000 Medicare FFS Beneficiaries



# Readmissions	14,567	13,865	13,863	13,692	14,695	13,929	13,650	13,330
# Beneficiaries	970,278	975,713	981,527	984,972	975,024	978,539	983,718	987,466

Data encompasses 30 day readmissions to any hospital for all Medicare FFS beneficiaries residing in the state

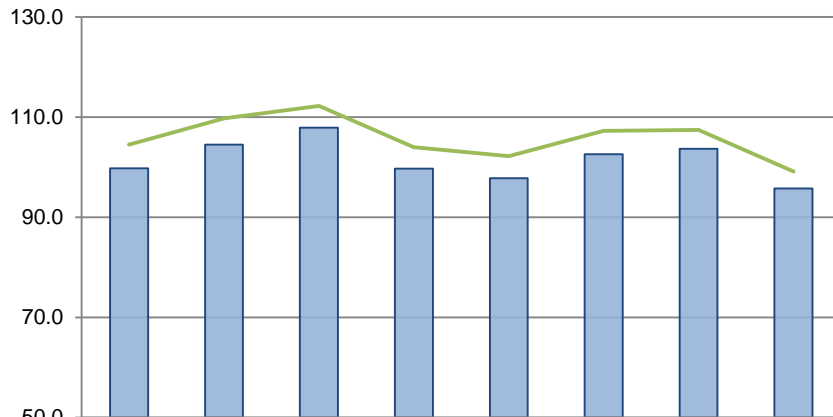
30 Day All Cause Admissions per 1,000 Medicare FFS Beneficiaries



# Admissions	72,813	70,888	68,970	70,446	74,339	71,305	67,948	68,815
# Beneficiaries	970,278	975,713	981,527	984,972	975,024	978,539	983,718	987,466

Data encompasses admissions to any hospital for all Medicare FFS beneficiaries residing in the state

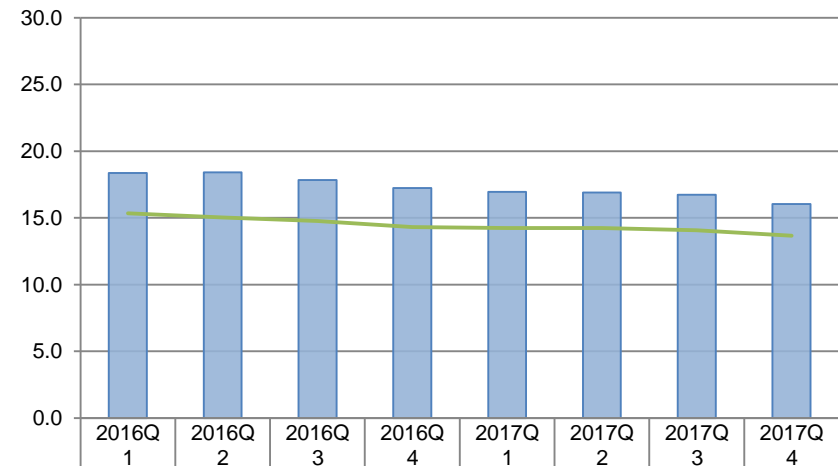
Community ED Visits per 1,000 Medicare FFS Beneficiaries



# ED Visits	10,000	10,000	10,000	10,000	10,000	10,000	10,000	10,000
# Beneficiaries	970,278	975,713	981,527	984,972	975,024	978,539	983,718	987,466

Data reflects ED visits at any hospital for all Medicare FFS beneficiaries residing in the state

Community Observations per 1,000 Medicare FFS Beneficiaries



# Observations	18,000	18,000	17,800	17,200	17,000	16,900	16,700	16,000
# Beneficiaries	970,278	975,713	981,527	984,972	975,024	978,539	983,718	987,466

Data reflects observation stays at any hospital for all Medicare FFS beneficiaries residing in the state

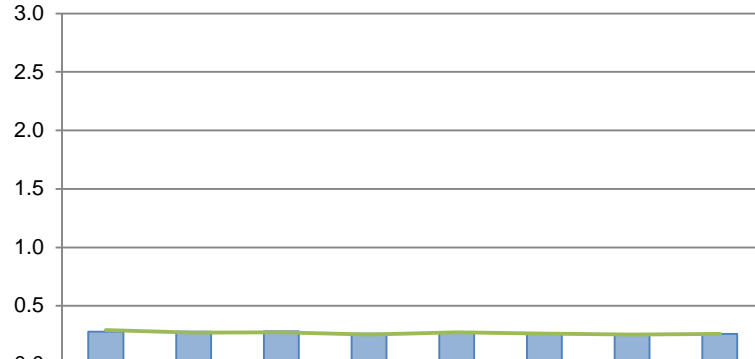
Contact Information:

Dawn Hobill, MHA: 781.287.9163 dhobill@healthcentricadvisors.org

Statewide Safe Transitions Measures

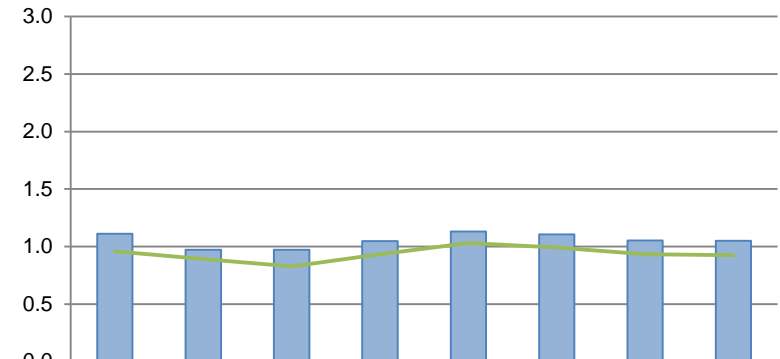
Massachusetts

30 Day Acute Myocardial Infarction Readmissions per 1,000 Medicare FFS Beneficiaries



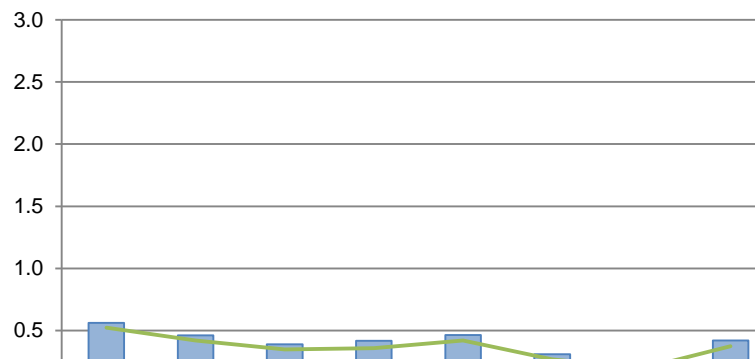
	2016 Q1	2016 Q2	2016 Q3	2016 Q4	2017 Q1	2017 Q2	2017 Q3	2017 Q4
State	0.28	0.28	0.28	0.26	0.27	0.26	0.26	0.26
NE Region	0.29	0.27	0.27	0.25	0.27	0.26	0.25	0.26
# Readmissions	271	274	277	258	267	258	254	256
# Beneficiaries	970,278	975,713	981,527	984,972	975,024	978,539	983,718	987,466

30 Day Congestive Heart Failure Readmissions per 1,000 Medicare FFS Beneficiaries



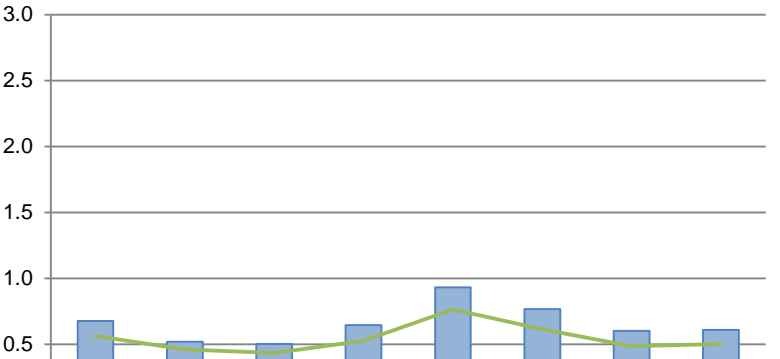
	2016 Q1	2016 Q2	2016 Q3	2016 Q4	2017 Q1	2017 Q2	2017 Q3	2017 Q4
State	1.11	0.97	0.97	1.05	1.13	1.11	1.05	1.05
NE Region	0.96	0.89	0.83	0.93	1.03	0.99	0.93	0.92
# Readmissions	1,079	949	955	1,032	1,104	1,083	1,037	1,038
# Beneficiaries	970,278	975,713	981,527	984,972	975,024	978,539	983,718	987,466

30 Day Pneumonia Readmissions per 1,000 Medicare FFS Beneficiaries



	2016 Q1	2016 Q2	2016 Q3	2016 Q4	2017 Q1	2017 Q2	2017 Q3	2017 Q4
State	0.56	0.46	0.39	0.42	0.46	0.31	0.24	0.42
NE Region	0.52	0.42	0.35	0.36	0.42	0.27	0.19	0.37
# Readmissions	545	451	382	411	453	304	232	416
# Beneficiaries	970,278	975,713	981,527	984,972	975,024	978,539	983,718	987,466

30 Day COPD & Bronchiectasis Readmissions per 1,000 Medicare FFS Beneficiaries



	2016Q1	2016Q2	2016Q3	2016Q4	2017Q1	2017Q2	2017Q3	2017Q4
State	0.68	0.52	0.50	0.64	0.93	0.77	0.60	0.61
NE Region	0.56	0.46	0.43	0.53	0.76	0.61	0.48	0.50
# Readmissions	656	507	493	634	907	750	592	600
# Beneficiaries	970,278	975,713	981,527	984,972	975,024	978,539	983,718	987,466

Contact Information:

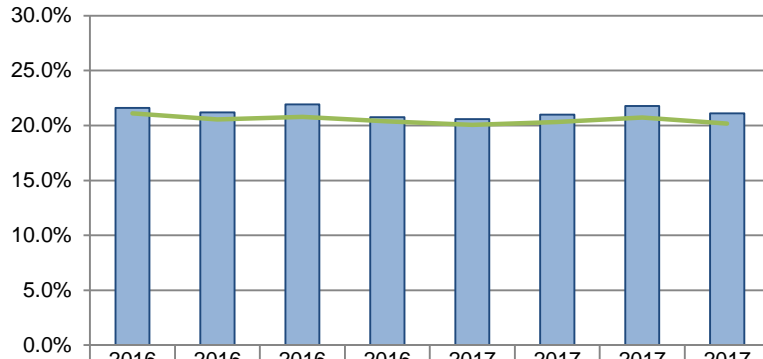
Dawn Hobill, MHA: 781.287.9163 dhobill@healthcentricadvisors.org

Note: Missing data for a given quarter indicates there were no admissions for that diagnosis.

Statewide Safe Transitions Measures

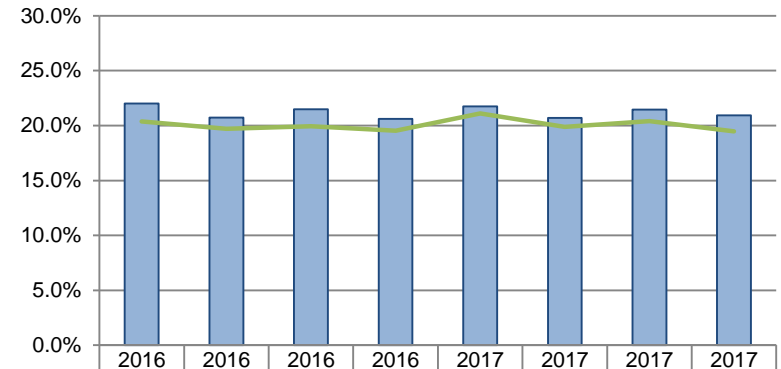
Massachusetts

Percent of Statewide Discharges to Home Health that were Readmitted



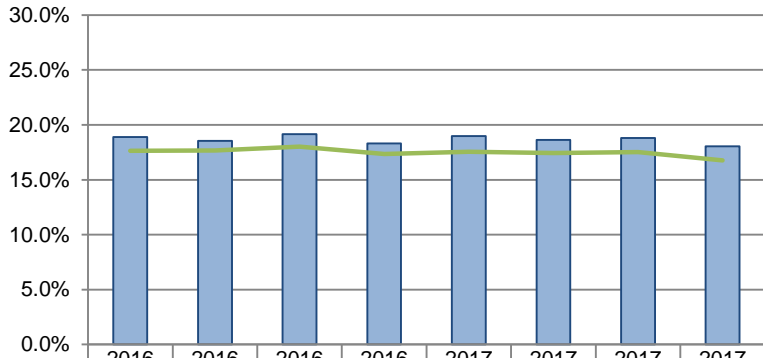
	2016 Q1	2016 Q2	2016 Q3	2016 Q4	2017 Q1	2017 Q2	2017 Q3	2017 Q4
State	21.6%	21.2%	21.9%	20.8%	20.6%	21.0%	21.8%	21.1%
NE Region	21.1%	20.6%	20.8%	20.4%	20.1%	20.3%	20.7%	20.2%
Readmissions	4110	3990	3897	3920	4083	4147	4094	4122
Live Discharges	19016	18827	17768	18877	19824	19752	18798	19527

Percent of Statewide Discharges to SNF that were Readmitted



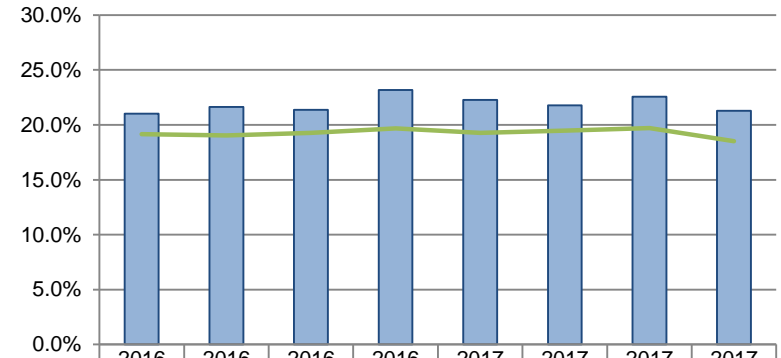
	2016 Q1	2016 Q2	2016 Q3	2016 Q4	2017 Q1	2017 Q2	2017 Q3	2017 Q4
State	22.0%	20.7%	21.5%	20.6%	21.8%	20.7%	21.5%	20.9%
NE Region	20.4%	19.7%	19.9%	19.5%	21.1%	19.9%	20.4%	19.5%
Readmissions	3871	3385	3396	3392	3877	3371	3295	3284
Live Discharges	17587	16319	15812	16465	17821	16287	15355	15696

Percent of Statewide Discharges to Home that were Readmitted



	2016 Q1	2016 Q2	2016 Q3	2016 Q4	2017 Q1	2017 Q2	2017 Q3	2017 Q4
State	18.9%	18.5%	19.2%	18.3%	19.0%	18.6%	18.8%	18.1%
NE Region	17.7%	17.7%	18.0%	17.3%	17.6%	17.4%	17.5%	16.8%
Readmissions	5049	4948	5091	4783	5110	4922	4796	4431
Live Discharges	26710	26674	26571	26134	26908	26404	25490	24548

Percent of Community Discharges to Other Settings* that were Readmitted



	2016 Q1	2016 Q2	2016 Q3	2016 Q4	2017 Q1	2017 Q2	2017 Q3	2017 Q4
State	21.0%	21.6%	21.4%	23.2%	22.3%	21.8%	22.6%	21.3%
NE Region	19.1%	19.0%	19.3%	19.7%	19.3%	19.5%	19.7%	18.5%
Readmissions	1537	1542	1479	1597	1625	1489	1465	1493
Live Discharges	7314	7131	6922	6893	7296	6838	6490	7012

*All remaining settings other than Home, Home Health and SNF

Contact Information:

Dawn Hobill, MHA: 781.287.9163 dhobill@healthcentricadvisors.org

Note: Missing data for a given quarter indicates there were no admissions for that diagnosis.