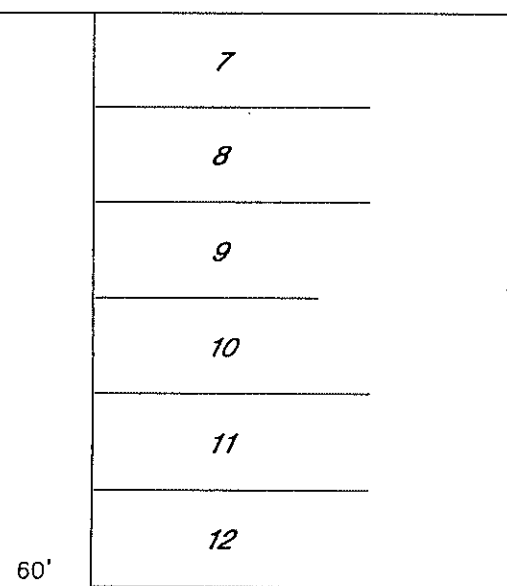
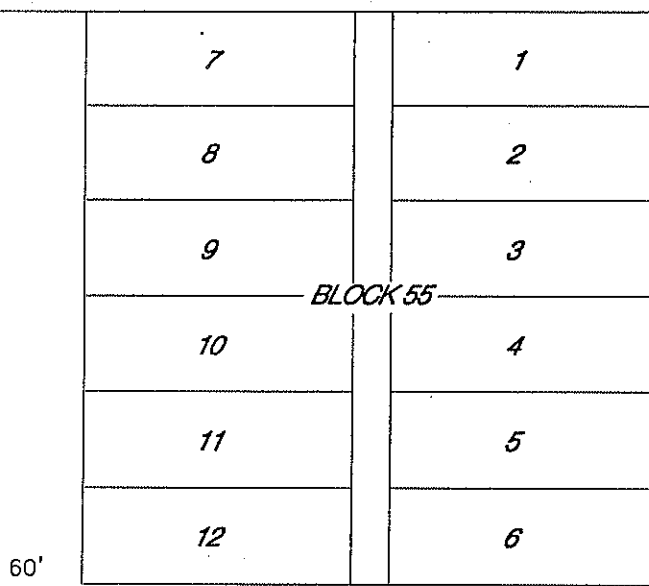
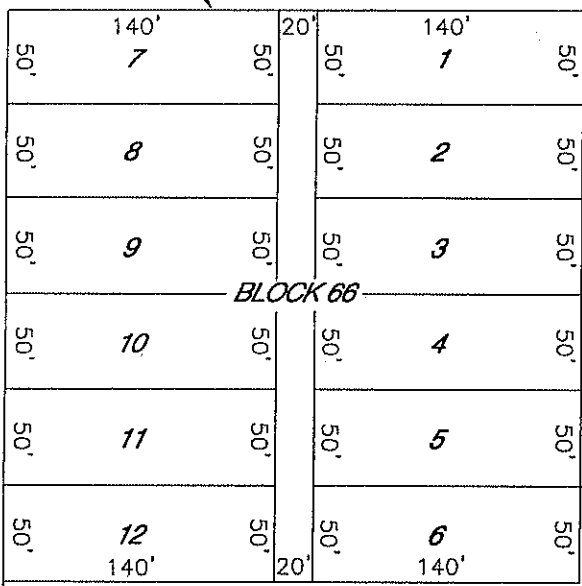

Only three corners were found of the original corners set. Blocks 67-69 and blocks 55-58 are undeveloped land out of the existing subdivision. Recorded in 1930. All streets and alleys were dedicated to the public per the recorded plat. Utilizing this information please address the following:

1. You have been hired to stake out lots 3 & 4, block 68 and lots 9&10, block 57 and provide a plat showing all lot dimensions.
2. Make a sketch to show the width of orient avenue, the distance to control corner found on block 69, and the distance to ~~mesquite-street~~.
oak

TYPICAL BLOCK DIMENSIONS



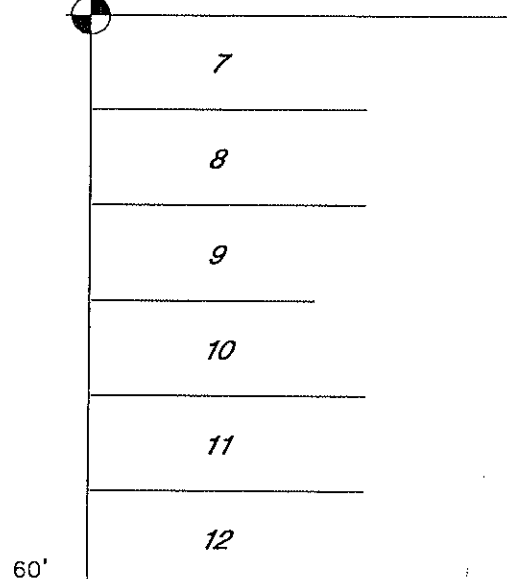
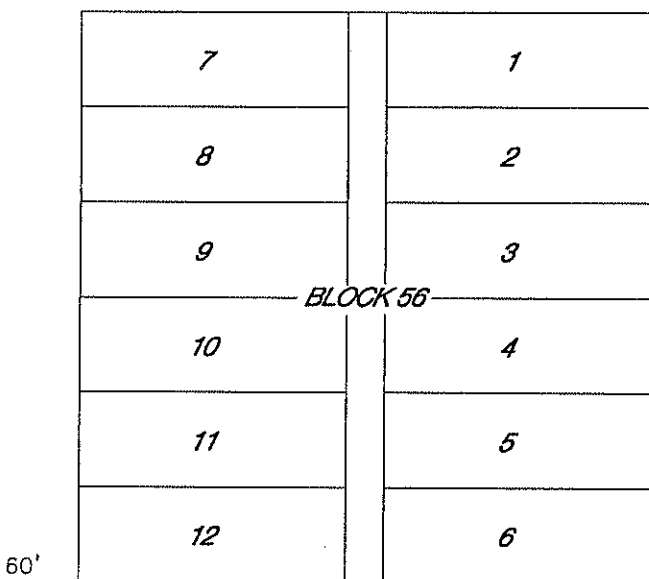
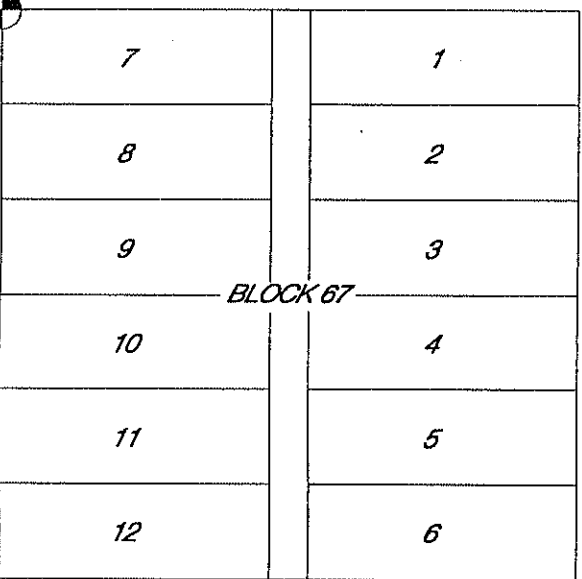
OAK STREET

60'

60'

3,101,572.613
383,621.802

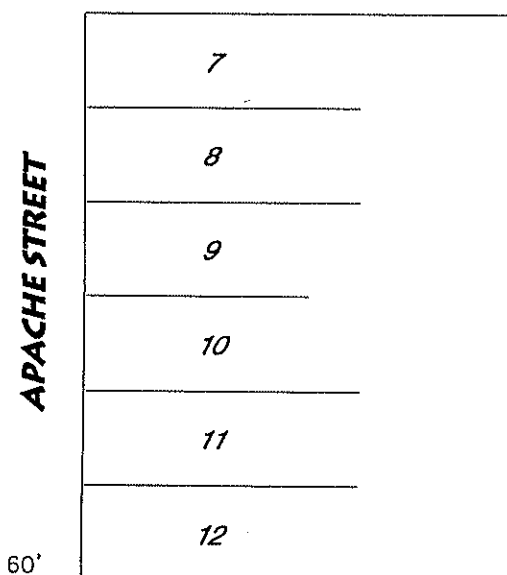
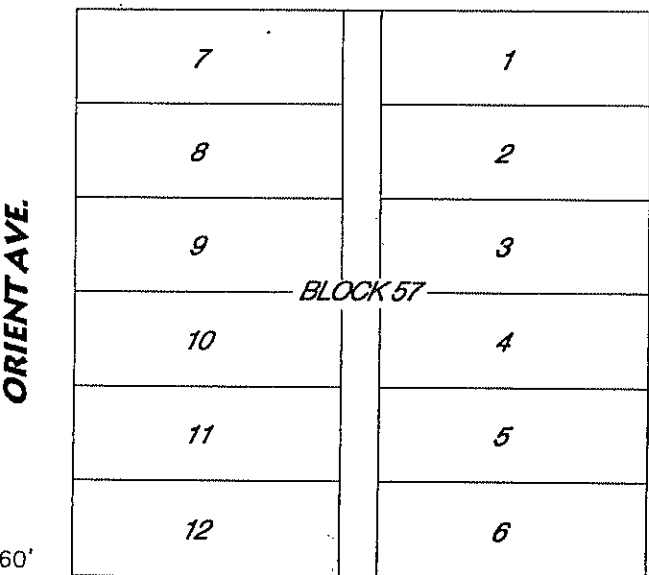
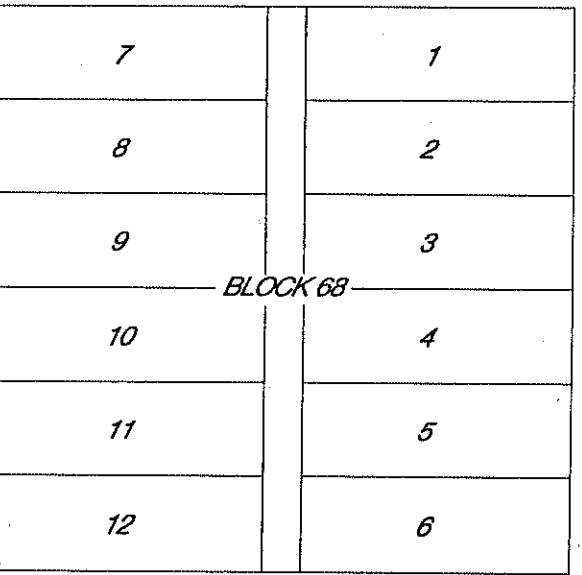
X=3,102,195.285
Y=383,981.302



MESQUITE STREET

60'

60'



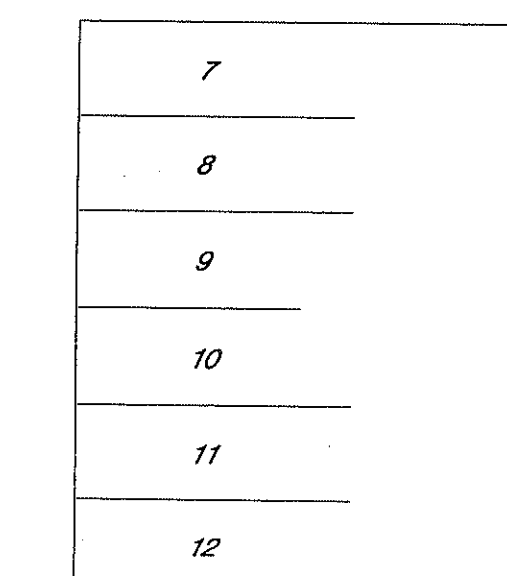
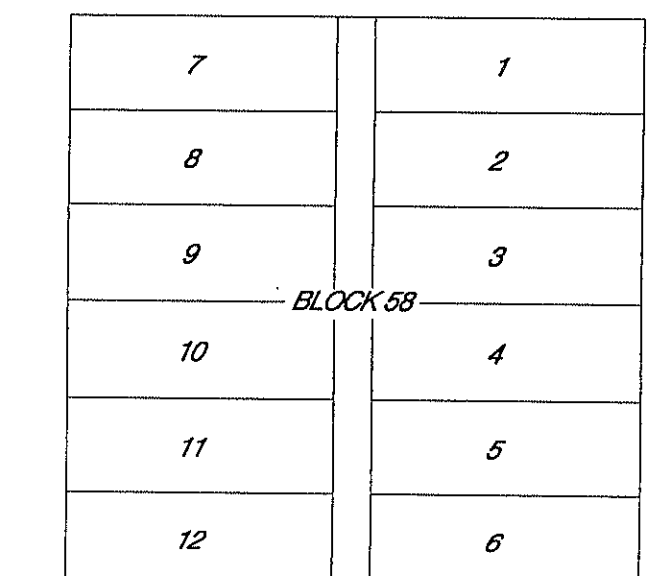
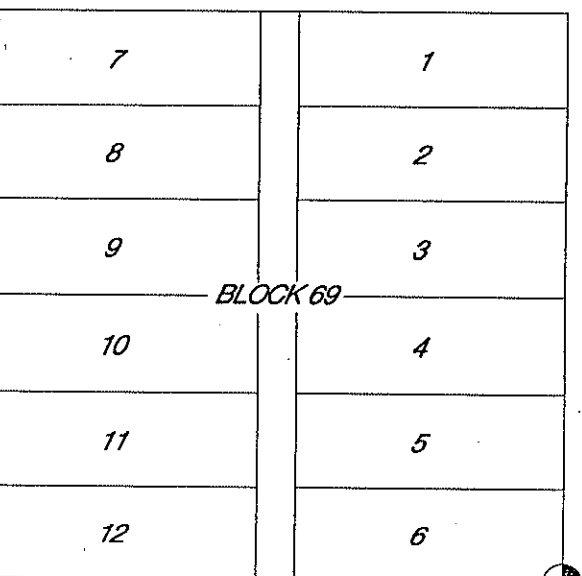
ORIENT AVE.

APACHE STREET

PINE STREET

60'

60'



PECAN STREET

60'

X=3,102,344.111
Y=382,885.529