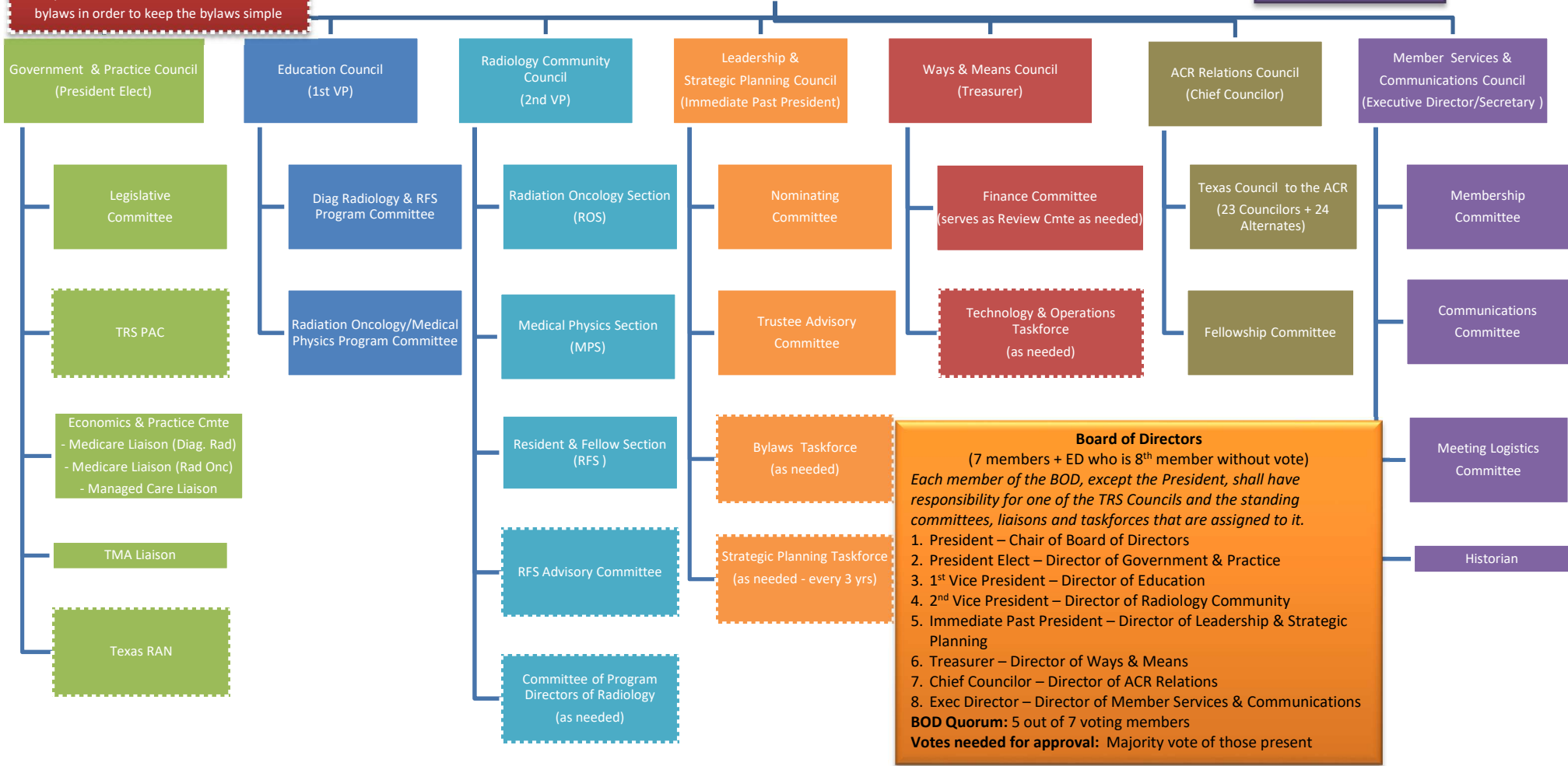


## TRS Board of Directors (Replaces Exec Cmte) - Chair: TRS President

The Board is the decision-making and policy-making entity of the TRS and has the ultimate responsibility for the activities and direction of the association. The board governs, develops policy, and sets a course of direction for the TRS, while maintaining focus on the mission and strategic goals of the TRS.



Note: Committees in boxes with dashed borders, are committees which though important, have been excluded from the bylaws in order to keep the bylaws simple



**Board of Advisors (BOA) = BOD + Advisory Committee Members**  
*The BOA includes the 8 person BOD plus key committee chairs and TRS members*

9. Legislative Committee Chair (*Leg Chair is also Texas RAN chair, TRS PAC Chair is V. Chair of RAN*)
10. Economics & Practice Committee Chair
11. Medicare Liaison (Diagnostic Radiology)
12. Medicare Liaison (Radiation Oncology)
13. Managed Care Liaison
14. Diagnostic Radiology & RFS Program Cmte Chair
15. Radiation Oncology Section Chair
16. Medical Physics Section Chair

**Board of Advisors (BOA) = BOD + Advisory Committee Members**

17. Resident & Fellow Section Chair
18. 2nd Past President
19. 3rd Past President
20. Vice Chief Councilor
21. Membership Committee Chair
22. Historian
23. TRS PAC Chair (invited guest)

+ Other guests invited by the President as needed