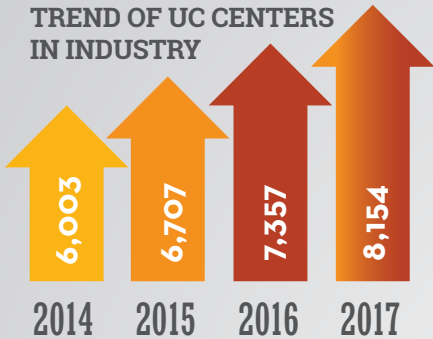


2017 BENCHMARKING REPORT SUMMARY

Headlines on Growth

In 2016:

TREND OF UC CENTERS IN INDUSTRY



90% OF URGENT CARE CENTERS ANTICIPATED GROWTH IN 2016

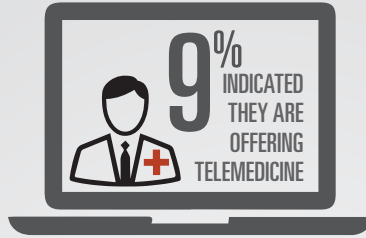
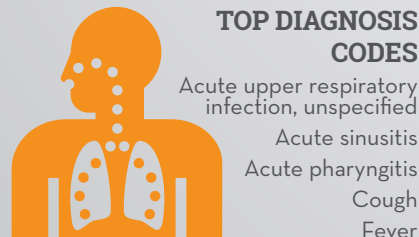
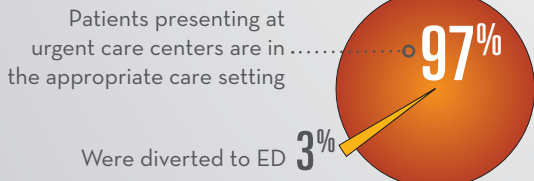
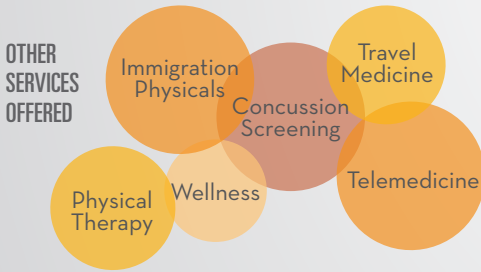
73% ACQUIRED OR BUILT A NEW LOCATION

94%

COMMUNICATE A SUMMARY OF TREATMENT TO EXTERNAL PHYSICIANS

96%

SAY THE NUMBER OF PATIENT VISITS INCREASED



URGENT CARE CENTERS WAIT:



30 MINUTES OR LESS TO SEE A PROVIDER



60 MINUTES OR LESS TOTAL PATIENT VISIT



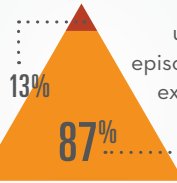
Urgent care centers report an average of over 15,000 patient care visits for the 2016 Fiscal Year. They handle an average of THREE patient care visits per hour and 50 visits per day.



indicated their target market area was within a 5 mile radius from the center.

URGENT CARE CENTERS PROVIDE:

Either urgent and ongoing primary care or specialty urgent care



urgent or episodic care exclusively

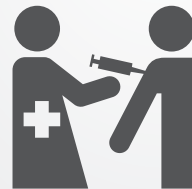
67% COMMERCIAL

17% MEDICARE OR MEDICAID

12% FULLY CASH PAY

4% OTHER (TRICARE, WORK COMP, DIRECT BILL EMPLOYER SERVICES)

% OF TOTAL PATIENT VISITS BY PAYER



TOP PROCEDURE CODES

- Injections/infusions
- Strep Test
- Flu Test
- Urinalysis

OWNERSHIP:

- 15% Hospital-owned
 - 14% Two or more physicians
 - 39% Corporate entity
 - 10% Single physician
 - 16% Joint venture with a hospital
 - 3% Non-physician investors
 - 2% Physician investors
 - 1% Other
- (I.E. INSURANCE COMPANY, PRIVATE EQUITY OR SHAREHOLDER OWNED)

TOP 5 STATES WITH URGENT CARE CENTERS



TOP REPORTED STAFFING MODELS

- 1 Physician, 1 Physician Assistant (PA), 2 Medical Assistants (MA), 1 Radiologic Technician (RT), 1 Center Manager, 2 Receptionists
- 1 Physician, 1 Nurse Practitioner, 1 MA, 1 Licensed Practical Nurse, 1 RT, 1 Center Manager, 1 Receptionist
- 1 Physician, 1 MA, 1 RT, 1 Receptionist