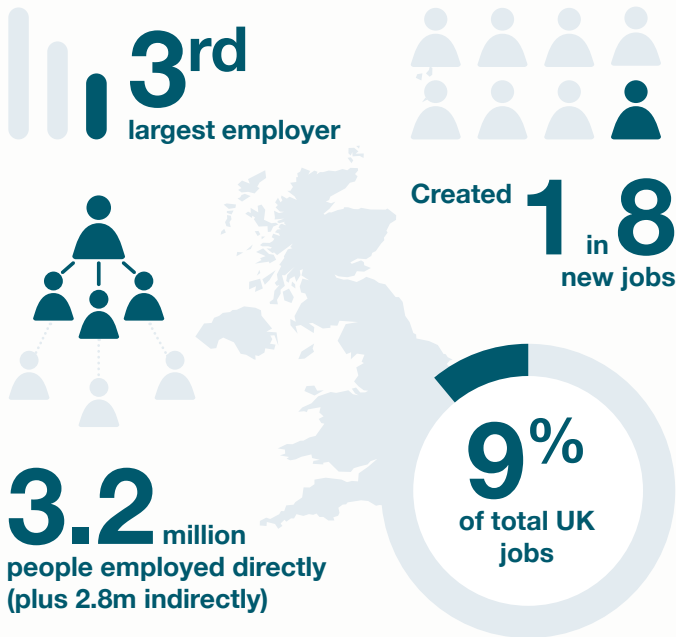


# UK Hospitality Industry Statistics

## UK EMPLOYMENT



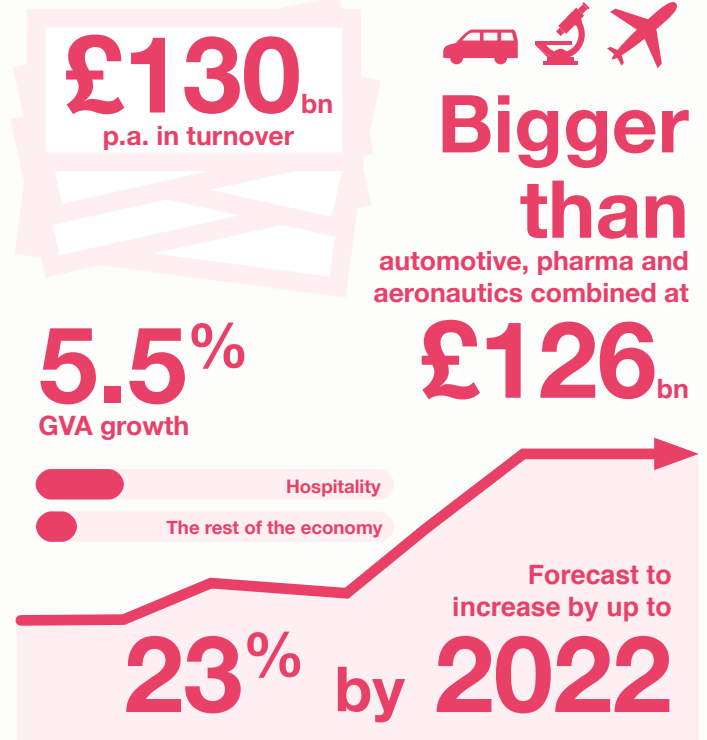
Over **2.5x** greater than motor manufacturing and other transport combined

**3x** greater than the Oil and Natural Gas Sector

**2x** greater than financial services

Forecast to grow by up to **10%** by **2020**

## ECONOMIC CONTRIBUTION



**Bigger than** automotive, pharma and aeronautics combined at

## TAX RECEIPTS

c. **£39** bn in direct gross tax receipts

## EXPORTS & INVESTMENT

**£18** bn in exports via tourism

**£10** bn business investment

## TOURISM

**£24.3** bn worth of visitor spend

c. **73%** total in-bound spend

## REGIONALITY

**Top 7** employer in every region

**11%** of the regional workforce

## SMEs

**99%** of hospitality business are SMEs

**50%** total turnover + GVA

## PRODUCTIVITY

**2.9%** growth since 2009

**50%** above economy as a whole