

A hand holding a blue globe of the Earth, with the continents visible in a darker shade of blue.

YOUR INDEPENDENT HP SOFTWARE COMMUNITY

HP LoadRunner and Performance Center 11.52 - What is new?

June 26, 2013

Brought to you by



Housekeeping

- Prize Drawings!



- This “LIVE” session is being recorded
- Q&A

Speakers



Silvia Siqueira

WW Senior Product Marketing Manager
HP Software



Shane Evans

WW Product Manager
HP Software

Pool question #1

What product(s) are you currently utilizing to execute performance tests?

1. HP LoadRunner
2. HP Performance Center
3. HP LoadRunner and HP Performance Center
4. Non-HP solutions



Pool question #2

- What version are you currently using?
 1. Version 11.52
 2. Version 11.51
 3. Version 11.50
 4. Version 11
 5. Version 9 or under



How long do you wait for your mobile app to respond?

**Application performance is
ESSENTIAL for Business
success**



Introducing HP LoadRunner 11.52

Aligned with market trends and customer experience

Application Performance testing

Increase business via Mobile



Ensure that mobile apps perform well and do not disrupt non-mobile application's performance

Deliver application faster



Enabling performance testing in early stages of development
Performance enhancements

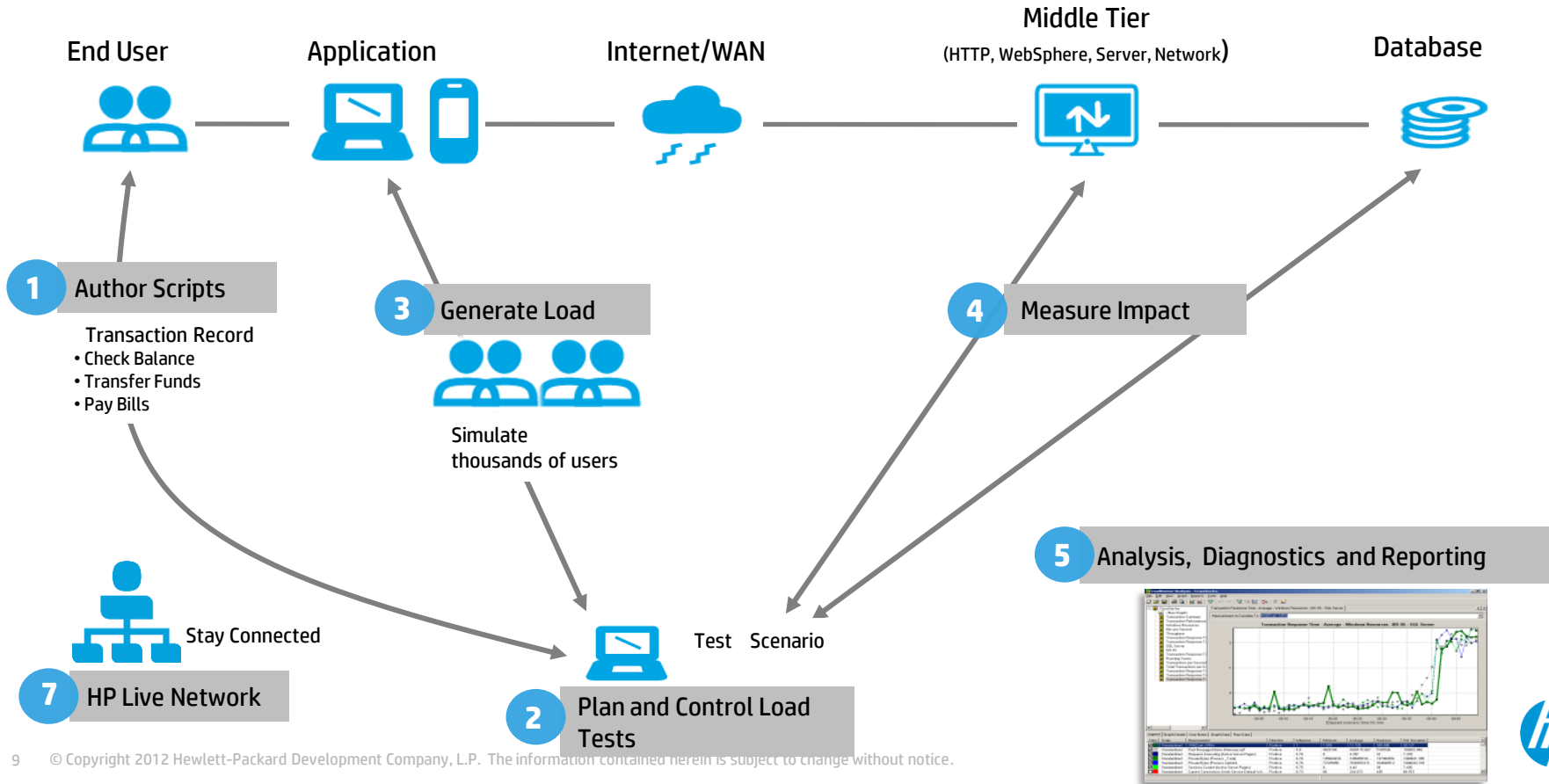
Share and learn faster



Seamless integration With HP Live Network

Expanding performance test footprint to modern platforms

HP LoadRunner Components



More about 11.52



Deliver applications faster

Performance, usability and functionality

- **Performance gains** across various features of HP Virtual User Generator (VUGen) and Analysis
 - Including the overall scripting, step navigator, web snapshot, report generation, and calculation capabilities.
- The **Replay Summary Report** now displays detailed statistics
- The **run-time settings** user interface has been improved.
- HP LoadRunner and Performance Center can be configured to use a **round-robin method** to ramp up the groups between all of the load generators.



Deliver applications faster

Enable Agile performance Delivery

Build Load Test scripts during Dev

- Integration with Microsoft Visual Studio and Eclipse

Run Unit Tests in Load Test Scenarios

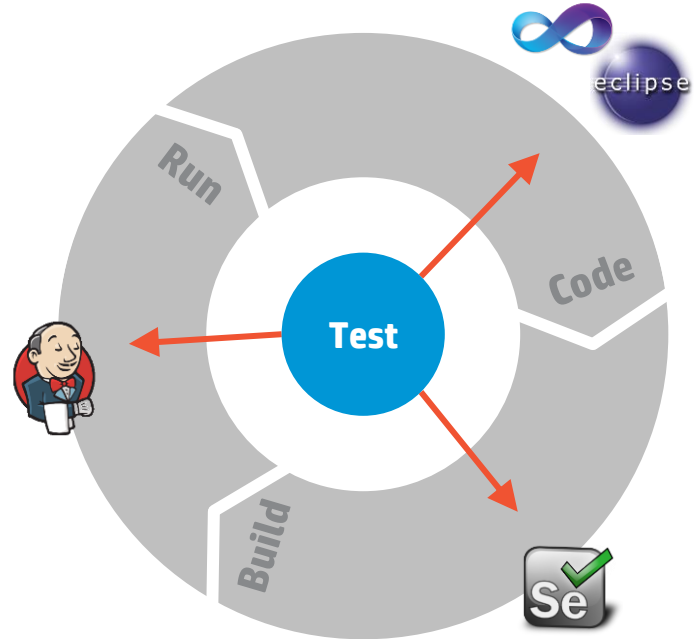
- Support for JUnit, nUnit and Selenium tests as part of LoadRunner scenarios
- Load Scenarios as part of Unit Testing

Add Performance Tests as build steps in Jenkins

- For automated test scheduling and execution
- Report pass/failure by defined SLA

*available on LoadRunner only

Performance Testing for
Continuous Delivery

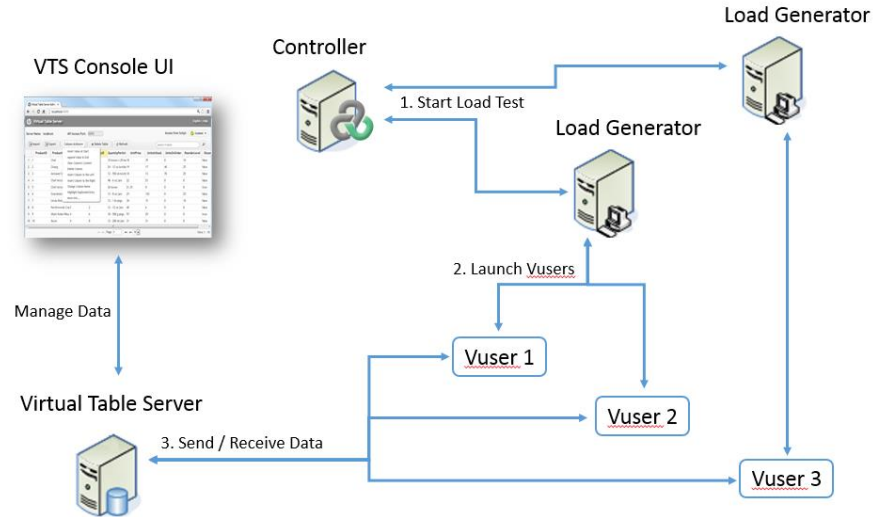


New Virtual Table Server (VTS)

Build Complex Scenarios to match your Complex Business

All-new VTS provides centralized storage and access of your Load Testing data for unmatched Business Process flexibility.

- Fast NoSQL Database for sharing data between virtual users
- Web Console for simplified admin
- Easy Import/Export of test data
- Integrated scripting APIs



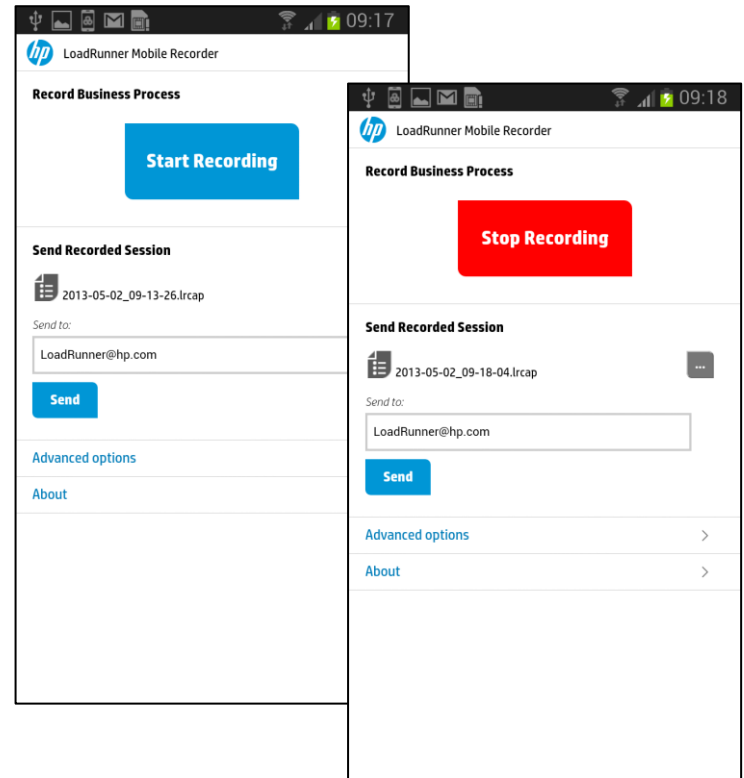
Increase business via mobile

Deliver applications that perform on mobile devices

Mobile traffic recording has been enhanced:

- NEW HP Mobile Recorder applications for Android platform
- NEW Proxy recording feature
- NEW documentation guide describes how to select a recording method for mobile applications

The latest Shunra™ network virtualization enhancements

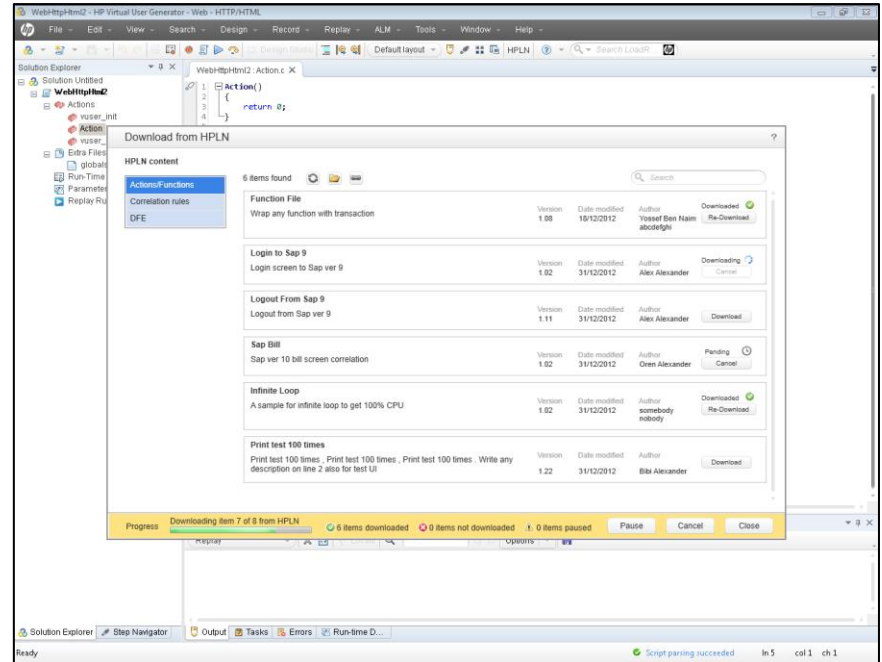


Share and learn faster

Extending the performance community

HP Live Network seamless integrated to VUGen

- Downloading function/action files, data format extension files, and correlation rules and directly integrating them into VUGen
- Uploading function/action files, data format extension files, and correlation rules



Expanding the performance test footprint to modern platforms

- Additional support to IPv6
- Added Linux distributions (LG)
- Protocol enhancements
- Browser support enhancements

Linux Distribution	Version supported	Architecture	Supported from
Red Hat Enterprise Linux	5.0/6.0	x86	9.x onwards
Red Hat Enterprise Linux	5.0/6.0	x64	11.52
Oracle Enterprise Linux 32-bit	5.0 RH / 6.0 RH	x86	11.52
Oracle Enterprise Linux 64-bit	5.0 RH 6.0 RH / 6.0 UEK	x64	11.52
Ubuntu Server	10.04 LTS / 12.04 LTS	x86/x64	11.52
Amazon Linux Image	2012.03 or later	x86/x64	11.52



Demo



Pool question #3

Based on this presentation, what features are the most important to your day job

1. Accelerate your test execution
2. Integration with developer's tools
3. Mobile
4. HP Live Network
5. None of the above



Q&A



Thank you

www.hp.com/go/loadrunner

