

WEDNESDAY, SEPTEMBER 16

3:00 - 5:00 p.m. PRE-CONFERENCE WORKSHOPS

1. School Finance and the Implications of the Biennial Budget on School Leaders - Wisconsin Ballroom

This pre-conference workshop will provide a state school finance overview and include the many changes from the 2015-17 biennial budget that affect school districts throughout the state
Brian Pahnke, Assistant State Superintendent, Division for Finance & Management, DPI

2. Be WISE - Leverage Technology, Data and Digital Resources in Your District - University Ballroom

DPI and CESA staff will share the current and planned status of the various WISE tools and systems - WISEdash, WISExplore, WISEdata and WISE Learn. Information on the latest dashboards and reports released in WISEdash for Districts and the WISEdash Public Portal will be shared in addition to planned releases. The WISExplore data inquiry team will share the valuable resources available for doing data inquiry and school improvement planning. The WISEdata team will share their progress on the multi-vendor open data collection tool designed to replace many current data collections including WSLs, ISES, and CWCS. The WISELearn team will highlight the development of the educator resource portal for sharing digital content, accessing online professional learning, connecting with social networks, and its connection with the Wisconsin Digital Learning Collaborative.
Kurt Kiefer, Melissa Straw, Janice Mertes, and Jim Anderson, DPI; Jim Lee, CESA 12, and Kaye Hendrickson, CESA 4

3. A New Balance: Wisconsin's Strategic Assessment System – What School Leaders Need to Know in 2015-16 Madison Ballroom

The shifting landscape of our statewide summative assessments has been front and center for the last year, and more change is expected over the coming year. Meanwhile, schools and districts are working hard to develop and maintain strategic assessment systems that purposefully and powerfully use an effective and efficient repertoire of formative, interim, and summative assessments in order to measure and understand student progress in a meaningful way. This session will focus broadly on what we know about our statewide assessments as we launch into the 2015-16 school year, and various resources and materials from DPI to support a strategic assessment system.

*Troy Couillard, Director–Office of Student Assessment; and
Melissa K. Passehl, Consultant–Office of Student Assessment,
DPI*

5:30 - 6:30 p.m. OPEN HOUSE - Hosted by John Ashley, WASB Executive Director and WASB Staff WASB Offices - 122 West Washington Avenue, Suite 400 One block off the capitol square

6:30 p.m. REGISTRATION

Wellness Activities - Rise and Shine! WASDA Supts Leading the Way!

During the early morning hours on Thursday, Sept. 17, and Friday, Sept. 18, from 5:30-7 a.m. there will be facilitated activities for anyone interested. Walking, Running, Yoga, or other activities will be led by WASDA Supts. Stay tuned for details and where to meet! You don't have to be an exercise warrior to participate! Just show up for some fellowship and wellness to start your day at whatever activity you feel most comfortable.

7:00 - 8:30 p.m. GENERAL SESSION - Wisconsin/Capitol AB



THE FUTURE OF EDUCATION POLICY DEVELOPMENT

This session will focus on the education policy environment in Wisconsin and the implications it has for the current and future landscape for public education.

JEFF PERTL, Senior Policy Advisor, DPI

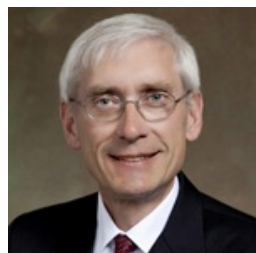
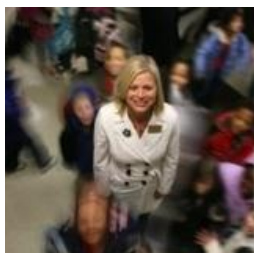
**8:30 - 10 p.m. WELCOME RECEPTION
Madison Ballroom**

THURSDAY, SEPTEMBER 17

7:00 a.m. BREAKFAST/REGISTRATION
Breakfast Sponsored by



8:00 - 8:30 a.m. GENERAL SESSION - Wisconsin/Capitol



CHAIR: *WASDA President Deb Kerr, Supt., Brown Deer*
WELCOME ADDRESS: *State Superintendent Tony Evers*

8:30 - 9:45 a.m. 7 TECHNOLOGICAL CHANGES THAT ARE RESHAPING TEACHING AND LEARNING



New media technologies are reshaping how people interact and learn in and out of schools. In this talk, Rich Halverson will discuss how technologies such as social media, digital media production communities, fantasy sports, massively open online games and courses, learning management systems and mobile devices are changing teaching and learning, and how such tools and practices might be directed toward creating the kinds of learning environments we want.

DR. RICHARD HALVERSON, Professor, Educational Leadership & Policy Analysis, UW-Madison

9:45 - 10:00 a.m. BREAK

10:00 - 11:15 a.m. EXPERT PANEL ON TECHNOLOGY INTEGRATION IN TEACHING AND LEARNING

Facilitator: Dr. Richard Halverson, Professor, Educational Leadership & Policy Analysis, UW-Madison

Panel: Kris Gilmore, Supt., D.C. Everest; Tim Schigur, Supt., Milton and Chris Patritto, Supt., Hurley

11:15 - 12:00 p.m. LUNCH - Madison Ballroom
(Box lunches)

12:00 - 1:00 p.m. STATE SUPERINTENDENT'S ANNUAL STATE OF EDUCATION ADDRESS, FRIENDS OF EDUCATION ADDRESS & TEACHERS OF THE YEAR RECOGNITION - State Capitol Rotunda
State Superintendent Tony Evers

**1:15 - 2:30 p.m. EVIDENCE AS THE CENTRAL DRIVER
FOR CONTINUOUS IMPROVEMENT AND
EFFECTIVE LEADERSHIP**



Evidence-based leadership in aligned systems will be crucial to achieve continuous improvement in teaching and learning. Systems Thinking is central to the work of today's superintendents and will be the emphasis in this address by JoAnn Sternke.

JOANN STERNKE, Supt., Pewaukee

2:30 - 2:45 p.m. BREAK

2:45 - 3:45 p.m. EXPERT PANEL

Facilitator: JoAnn Sternke, Supt., Pewaukee

Panel: Pat Greco, Supt., Menomonee Falls; Brad Saron, Supt., Sun Prairie; and Keith Hiltz, Ashland

**4:00 - 5:00 p.m. INTERNATIONAL PARTNERSHIPS
Conference Room V**

Do you have an interest in developing international partnerships? Or, are you just curious about some of the initiatives happening statewide? Join school districts to share information about current and developing initiatives in an open forum discussion. This discussion is open to everyone.

Facilitated by Susan Borden, Supt., DeForest, and Karen Schulte, Supt., Janesville

4:00 - 5:00 p.m. COMMITTEE MEETINGS

**5:00 - 6:15 p.m. RECEPTION
Co-Sponsored by**



FRIDAY, SEPTEMBER 18:

**7:00 a.m. BREAKFAST - University Ballroom
Co-sponsored by Viterbo University**

8:15 - 9:45 a.m. GENERAL SESSION - Wisconsin/Capitol AB

MAJOR SHIFTS IN EDUCATIONAL THINKING



This interactive talk examines ten areas in which educational thinking has done a 180 in recent years. Here are some of the old beliefs that have been overturned by evidence and effective practices: intelligence and talent are fixed at birth; poverty is destiny; principals can't be more than managers; great teachers are born, not made; teacher evaluation is inevitably a weak lever for change; K-12 students are too young to be part of the teacher-evaluation process; tests are test; and test data can be used to evaluate teachers.

KIM MARSHALL, Author and Publisher of the weekly, *The Marshall Memo*

9:45 - 10:00 a.m. BREAK

**10:00 - 10:45 a.m. AN UPDATE ON KEY FEDERAL POLICY
ISSUES FOR SCHOOL LEADERS**



Sasha Pudelski has the privilege of representing school superintendents on Capitol Hill and will provide an update on a variety of issues that AASA actively lobbies: Title I and IDEA funding, ESEA reauthorization, IDEA reauthorization, the Child Nutrition Reauthorization, the Perkins CTE reauthorization, and the Higher Education reauthorization.

SASHA PUDELSKI, Assistant Director, Policy & Advocacy, AASA

10:45 - 11:00 a.m. BREAK

**11:00 - 12:00 p.m. NEW ASSEMBLY INITIATIVES IN
EDUCATION POLICY DEVELOPMENT**

A panel of Leading Wisconsin Assembly Representatives from three newly established Assembly Taskforce and Work Committees will provide Superintendents with an overview of the anticipated focus and scope of each of the committee's tasks and potential areas for policy recommendations. School leaders will have an opportunity to understand the implications of the work and where they might most effectively add support or input to the process.

Moderator: John Forester, SAA Government Relations Director

Panel Members - Chairperson or Designee for:

Assembly Speakers Taskforce on Urban Education

Assembly Speakers Taskforce on Youth Workforce Readiness

Assembly Workgroup on Education Reform

**12:00 p.m. CLOSING COMMENTS/ADJOURN
Jon Bales, WASDA Executive Director**

12:00 p.m. LARGE DISTRICT CAUCUS

WASDA COMMITTEE MEETINGS

**Thursday, September 17
4 - 5 p.m.**

**WASDA Legislative Committee
University Ballroom AB**

**WASDA Effective Governance & Superintendent/
Board Relations Committee
Conference Room I**

**K-8 Schools Committee
Conference Room II**

**WASDA Professional Development Committee
Conference Room III**

**WASDA Small Schools Committee
Conference Room IV**

Please attend your committee meeting!

**SPECIAL THANK YOU TO THE FOLLOWING
WASDA BUSINESS PARTNERS
FOR SUPPORTING THE
FALL SUPERINTENDENTS CONFERENCE**

Ameresco, Inc.
CG Schmidt, Inc.
Corporate Contractors, Inc.
Discovery Education
Dreambox Learning, Inc.
Eppstein Uhen Architects
Forecast5 Analytics
Goalbook
J.H. Findorff & Son, Inc.
JP Cullen
Lifetouch
Lincoln Learning Solutions
Miron Construction Co., Inc.
MSOE Rader School of Business
National Insurance Services
Neola of Wisconsin
Nexus Solutions
Northwest Evaluation Association
Patina Solutions
Pearson Education
PMA Securities, Inc.
Renaissance Learning
Robert W. Baird Co., Inc.
Schneider Electric
Security Health Plan
Skyward
Somerville Architects & Engineers
UW-Madison
Viterbo University
WASB Insurance Plan
WEA Member Benefits
WEA Trust

MARK YOUR CALENDAR!

**FALL SUPERINTENDENTS
CONFERENCE
Presented by WASDA**

*In cooperation with the
State Superintendent of Public Instruction
Tony Evers*

**September 14-16, 2016
Madison Concourse Hotel**

PLAN TO ATTEND A WASDA REGIONAL!

October 20

Northwoods Supper Club - Fifiield

October 21

Holiday Inn Eau Claire South

October 28

Mequon Campus - MATC

October 29

Holiday Inn American Center - Madison

November 5

Holiday Inn - Stevens Point

November 6

KI Convention Center - Green Bay

Register at www.wasda.org!