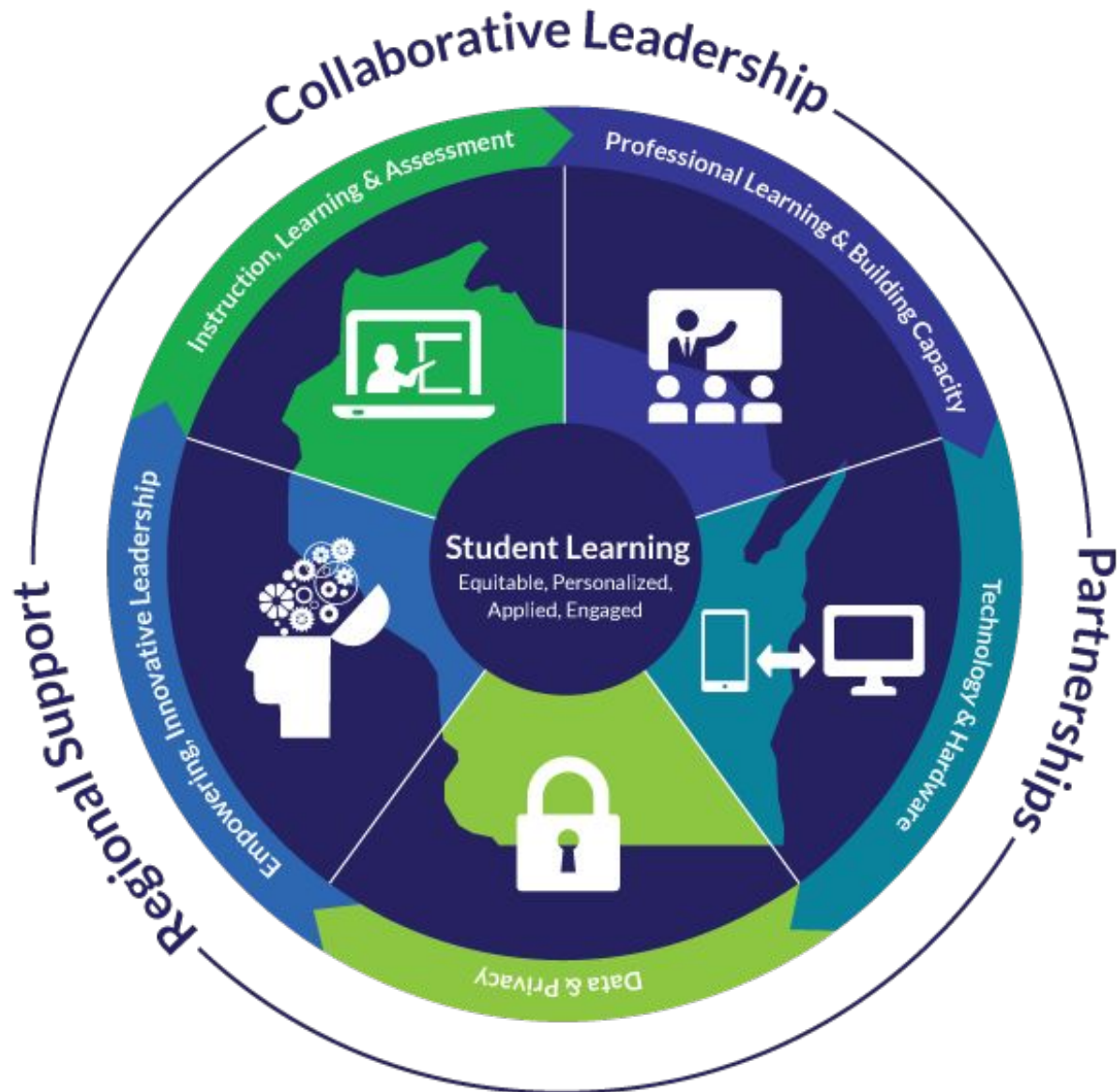


# Data and Technology Initiatives

WISEdata, WISEdash, WISExplore, WISELearn, WISEgrants  
2017

Gabrielle Tallman  
WI Department of Public Instruction

# Wisconsin Digital Learning Plan



<http://dpi.wi.gov/digital-learning>

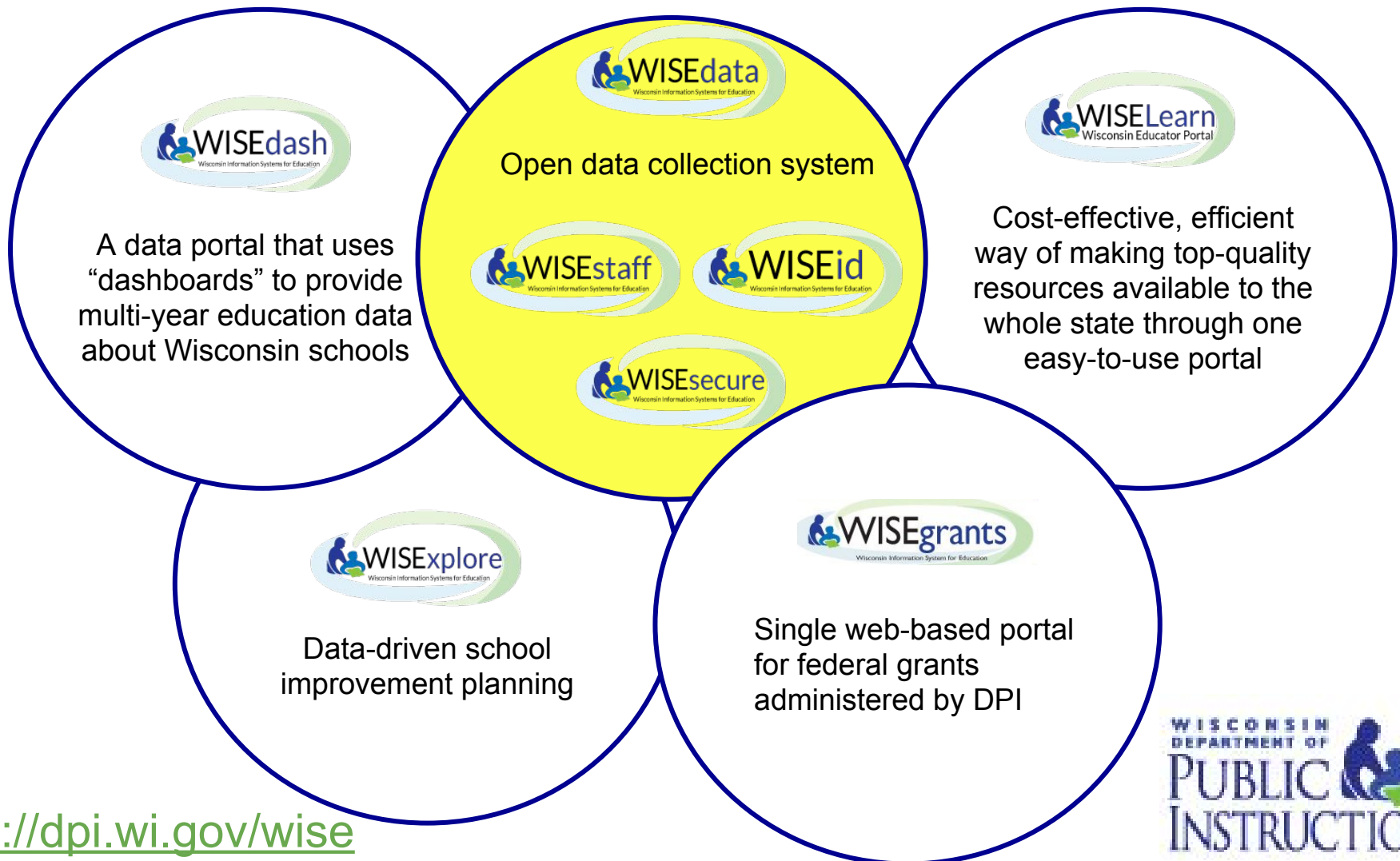


# Introduction to WISE



# WISE:

## Wisconsin Information Systems for Education



# How WISEdata Works

1. Staff and students are set up in WISEid.
2. Schools enter info into their SIS.
3. Data from the SIS is pushed to WISEdata.
4. Validations run in WISEdata.
5. Users modify and update data continuously.



WISCONSIN DEPARTMENT OF  
PUBLIC INSTRUCTION

Tony Evers, PhD, State Superintendent

# WISEdash: 3 Tools

## WISEdash Public Portal

Data Tool for School Boards and the Public



NO student-level data is shown; data is summarized and redacted.

## WISEdash for Districts

**Secure** Data  
Analytic Tool for Districts and Schools



Districts only see their students.

## WISEdash Local

District data **not** reported to DPI

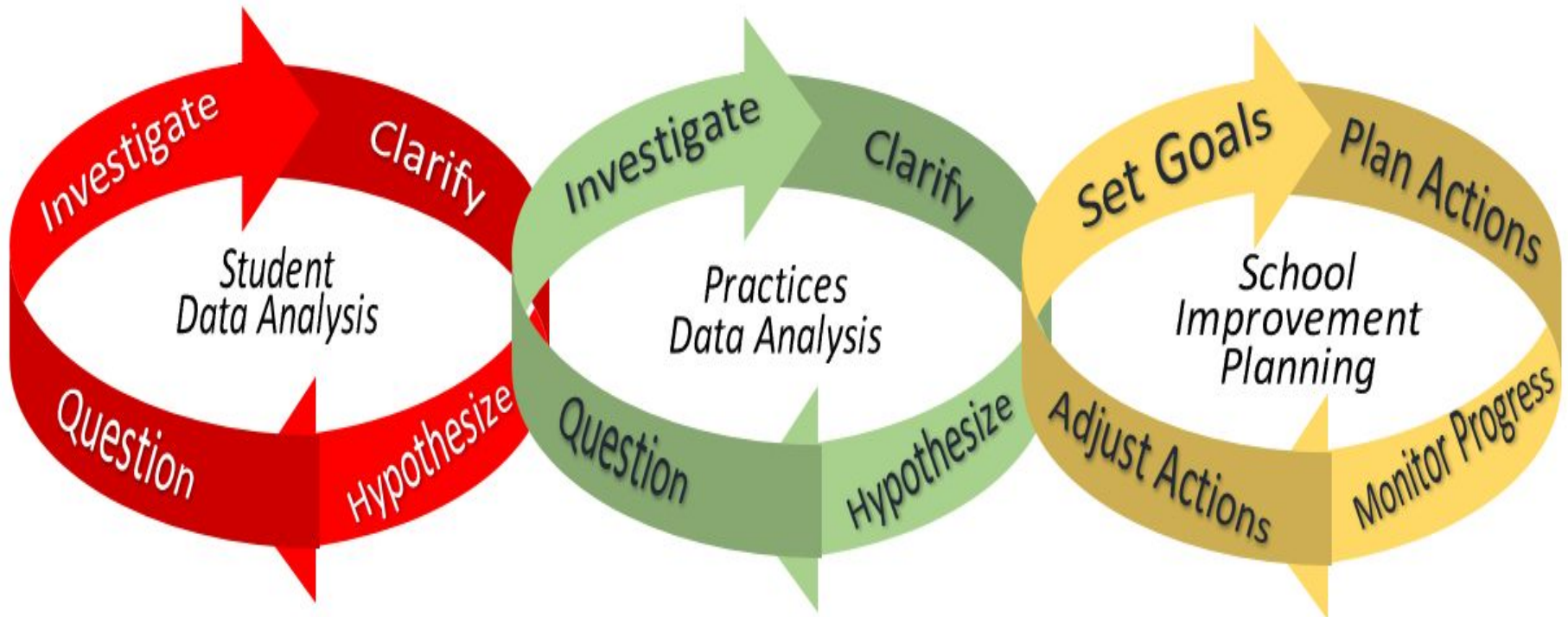


Districts only see their students.

# WISExplore



## WISExplore Data Inquiry Process



<http://dpi.wi.gov/wisexplore>

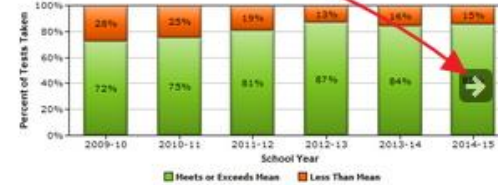
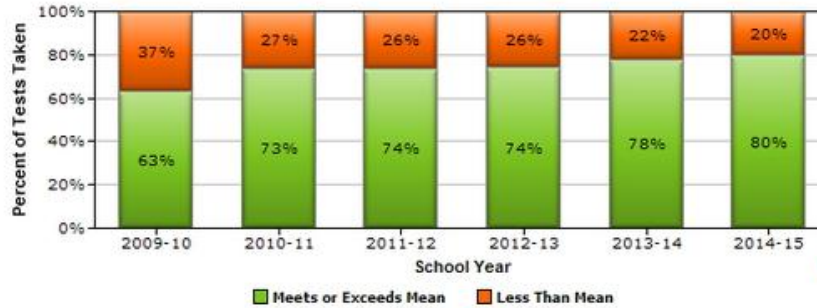
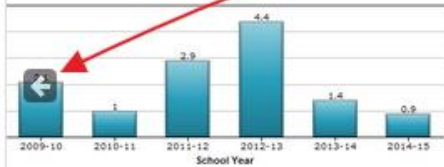
Question or Statement

Are our students keeping up?

Investigate

Refresh

Scrollable graph images



MAP FALL TERM PERCENT EXCEEDING NATIONAL MEAN (TREND)

Zoom selected image

Actions Clarify Hypothesize

Enter findings and root causes while viewing any image

Export

Finding

Action

Persist

Priority

+ Add New

In general, good % exceeding mean

Inform

5 Years

Medium



Select action...

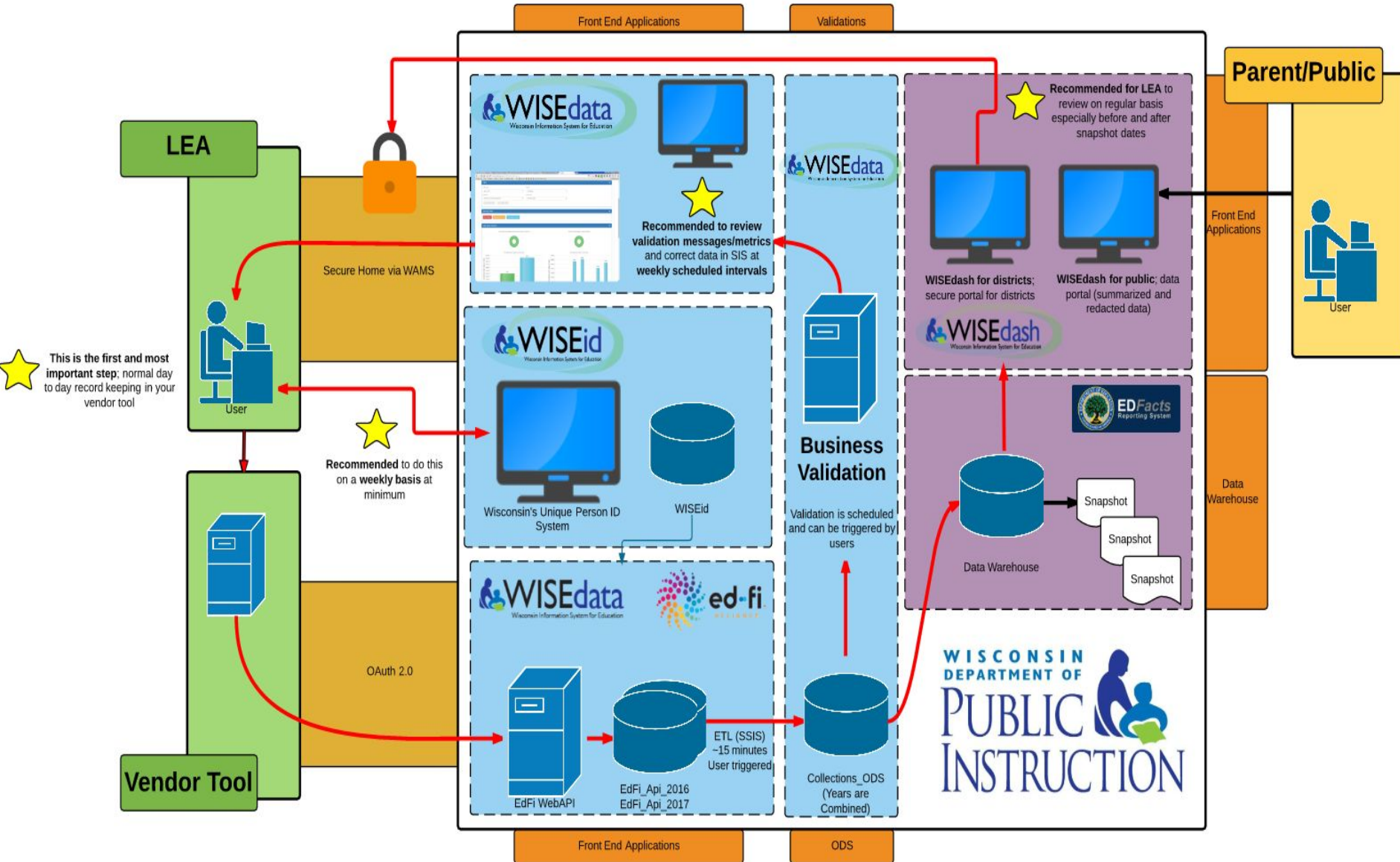
Select persist...

Select priority...





# WISEdata Flow



Welcome  
to WISELearn!

The Wisconsin Educator Portal

[Click here to start exploring](#)



## What is WISELearn?

WISELearn is the Wisconsin Educator Portal, your one-stop spot to find the best of Wisconsin [education resources](#) and [communities](#).

[More info](#)

## Search Our Resources

Search or browse high quality resources (learning objects, instructional materials, and more), chosen for and by Wisconsin educators, for use in the classroom.



[Advanced Search](#)



## Popular Resources

View the most popular teacher resources.

Professional Development Collection

Primary Search

Maximizing Profits: Selling Boomerangs



## Recently Added

Newest resources from Wisconsin educators

Close Reading, Grade 10

LearningExpress Library  
High School Equivalency Center

Ciencias en Español



## News

Important updates that are happening with WISELearn.

New Resources Curated for Wisconsin

College and Career Ready Students

Promoting Excellence for [All](#)

- Single web-based portal for federal grants administered by DPI
- Provides better opportunities for coordination of programs and funding
- Increases the level of accountability and transparency

# Data Privacy

- Privacy is a top priority.
- DPI manages a privacy webpage.
  - Select “Data Privacy” from <http://wise.dpi.wi.gov> or go to
  - [http://wise.dpi.wi.gov/wise\\_studentdataprivacy](http://wise.dpi.wi.gov/wise_studentdataprivacy)

**Please use these resources in your districts!**

<https://dpi.wi.gov/wise>

# Data and Technology Initiatives: WISE Overview

2017

Gabrielle Tallman  
WI Dept of Public Instruction