



February 28, 2013

Women In Bio *Welcome*

---

**Register Now for the Women In Bio Annual Celebration at BIO 2013:**

**Connecting Women, Growing Leaders, Eliminating Boundaries**

Join Women In Bio for an exciting evening at the Women In Bio Annual Celebration Reception on April 22, 2013. You will have the opportunity to network with fellow and prospective Women In Bio members from around the world and hear the amazing success story of our keynote speaker, Jill Milne, PhD, CEO of Catabasis Pharmaceuticals. She will discuss her scientific background, success as a business woman and the advice for the up-and-coming women leaders. [Click here](#) to register and for more information.

The poster features a portrait of Jill C. Milne, Ph.D., on the left. To her right is a green graphic with a hexagonal pattern and the text 'CONNECTING WOMEN, GROWING LEADERS, ELIMINATING BOUNDARIES'. At the top left, it says 'Women In Bio 2013 ANNUAL CELEBRATION'. At the top right is the WIB logo with the tagline 'Actively supporting career growth for women in the life sciences.' Below the graphic, it says 'Featuring Keynote Speaker: Jill C. Milne, Ph.D. CEO, Catabasis Pharmaceuticals, Inc.'

Women In Bio  
2013 ANNUAL CELEBRATION

WIB  
Women In Bio  
Actively supporting career growth  
for women in the life sciences.

CONNECTING WOMEN, GROWING LEADERS,  
ELIMINATING BOUNDARIES

Featuring Keynote Speaker:  
Jill C. Milne, Ph.D.  
CEO, Catabasis Pharmaceuticals, Inc.

**April 22, 2013 • 4:00 pm - 6:30 pm**  
**Metropolitan Club • Chicago, IL**  
Oak Room, 66th Floor • Willis Tower (f/k/a Sears Tower)

---

[Click here](#) to see a video of Lily Rin-Laures, M.D., previous president of the Chicago chapter of Women in Bio, discusses the biotech industry in Illinois and the upcoming [2013 BIO International Convention](#).



Interested in getting exposure for your company?

Sponsor Women In Bio's Annual Celebration! For more information, click [here](#) or contact [info@womeninbio.org](mailto:info@womeninbio.org).

---

## **Interview with a WIB Member Series Continues with Dr. Dottie Clower, Chapter lead of Pittsburgh WIB**

This continuing series showcases WIB members as they describe the navigational tactics of climbing their own professional ladder to success. We continue with this series by interviewing Dr. Dottie Clower from the Pittsburgh Chapter. Below are a few selections from the interview and a link to continue reading.



### **How did you get involved with WIB?**

The idea for WIB group here in Pittsburgh came from Lidiya Orlichenko, a researcher at University of Pittsburgh. She had been exposed to this group in another context and felt that it had a lot to offer. She approached Babs Carryer, who was at CMU in entrepreneurship group, with the idea of launching this chapter...

### **How has WIB helped you personally?**

The organization is very new in Pittsburgh; it was just launched in fall of 2012. Already I have met and developed relationships with women that I would otherwise have not had an opportunity to work with....

To read the entire interview with Dottie, please [click here](#).

---

## Join Us in Chicago and Kick Off to BIO 2013 with Women In Bio

This year WIB has a stellar line-up of events at BIO 2013. We start off with our first planned Meet-Up session "Women In Bio-Chicago Area Professionals and Executives in the Life Science Industry" on Tuesday, April 23, 2013 from 3:00 p.m. to 4:00 p.m. at **booth #4800**. The informal gathering is open to all BIO attendees, although is designed especially for the Chicago area attendees and will provide an informal setting for current and prospective WIB-Chicago chapter members to meet industry peers and discuss professional interests. Coffee and sweet treats will be provided.



We then have a second meet-up session "Speed Networking Session for Existing and Prospective WIB Members" on Wednesday, April 24, 2013 from 2:00 p.m. to 3:00 p.m. at **booth #4800**. Current and prospective WIB members will have the opportunity to speed network with industry peers and discuss professional interests. The Meet-Up is open to all BIO attendees.

WIB will be located in the Exhibit Hall at booth #4184. Be sure to stop by, say hello and learn more about our rapidly growing organization. If you are not yet registered for BIO yet and are a WIB member, [register for BIO 2013](#) and save big by using the registration codes below.

### Education, Exhibition, Networking & WIB Events

Education & Exhibition Access registration for \$295 (\$995 value)

>> Use code **PFWB295** to save \$700 by March 14

### Exhibition Access Registration & WIB Events

Exhibition Access Registration, Tues and Wed WIB events for FREE

>> Use code **PFWB** to save \$199 by March 14

**You must be a WIB member to take advantage of these discounts.** Not a member? [Sign up today!](#)

---



Over the past year our WIB Chapters have created their own LinkedIn groups highlighting their unique events and accomplishments. Click on any of the Chapter names (or WIB-National) to check out and join the groups that are most relevant to you!

- [WIB-National](#)
- [Atlanta](#)
- [Greater Boston](#)
- [Chicago](#)
- [Greater Montréal](#)
- [Pittsburgh](#)
- [Research Triangle Park \(RTP\)](#)
- [Seattle Metro](#)
- [San Francisco Bay Area](#)
- [Washington DC/Baltimore](#)



### **With Social Media Staying Connected to WIB is Easier than Ever!**

Facebook and Twitter are also easy ways to stay on top of the ever-expanding WIB chapter line-up, upcoming activities and job postings. To follow us on Facebook, [click here](#) and select the "Like" box at the top of the screen, and [click here](#) and select "follow" on Twitter. We just launched our YouTube page and will be adding videos in the upcoming weeks and months. [Click here](#) and please make sure to bookmark and subscribe today! If you have a twitter account, people tweet about WIB (@WomenInBio) events you're attending or just about WIB in general!

## **CHAPTER EVENTS**

### **Greater-Montreal Area Events**

#### **Joignez-vous à la section régionale du Grand Montréal de Femmes en bio pour le deuxième évènement de notre série déjeuner-exécutif**

La section régionale du Grand Montréal de Femmes en bio vous convie, mercredi 6 mars 2013, chez Bereskin & Parr, de 7 h 30 à 9 h, pour assister à la présentation de la Dre Mirela Baranci, Directrice principale et experte en leadership, sur les dirigeants de l'avenir : « The leaders that we need : Transforming leaders ».

#### **WIB-Greater Montreal for Our Second Executive Breakfast Series Event.**

WIB-Greater Montreal is pleased to invite you on Wednesday March 6, 2013 at Bereskin and Parr 7:30 a.m. - 9:00 a.m. when Executive Director and leadership expert Dr Mirela Baranci will present on the topic of "The leaders that we need: Transforming leaders". [Please click here](#) for more information and to register.

(Prière de noter que cette présentation sera donnée en anglais seulement.) [Cliquez ici pour](#) plus d'information et pour vous inscrire.

### **Premier événement de la série Petits-déjeuners exécutifs de la section régionale du Grand Montréal de Femmes en bio : Les paradoxes du changement**

Le 12 février dernier, la section régionale du Grand Montréal de Femmes en bio a tenu son premier événement de sa série de huit Petits-déjeuners exécutifs au siège social d'un des commanditaires de cette série, Corealis Pharma. Notre invité, Jean-Pierre Lemaitre, nous a entretenu de manière interactive et avec doigté sur les paradoxes du changement - le changement existe tout autour de nous et ses avantages sont évidents, toutefois nous sommes parfois portées à y résister, et ce, à tout prix.

[Cliquez ici pour lire un résumé complet de l'événement.](#)

### **WIB-Greater Montreal's First Executive Breakfast Series: The Paradoxes of Change**

On February 12, 2013 WIB-Greater Montreal held the first in its series of eight Executive Breakfast seminars at the headquarters of one of the series sponsors, Corealis Pharma. Our speaker Jean-Pierre Lemaitre lead a very entertaining and interactive discussion on the paradoxes of change - change is all around us and the benefits are clear, yet we tend to resist change at all costs.

[Click here to read the entire event review.](#)

## **RTP Chapter Events**

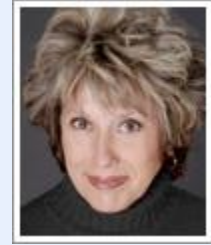
### **WIB-RTP to Host a Spring Networking Event**

Please join us at the WIB-RTP Spring Networking event at Serena's on March 7, 2013 from 6:00 p.m. - 8:00 p.m. EST. Jump-start the new year, share ideas, fuel your passion and expand your professional network with current and prospective WIB members. Space is limited, so please register early. [Click here](#) to register and for more information.

## **San Francisco Bay Area Events**

### **Pathway to Success: Be Smart Out Loud - Everywhere**

Join us on March 12, 2013, 6:00 p.m. - 8:30 p.m. PST at Genentech Hall, UCSF. There award-winning, executive coach and leadership expert, Fran Zone will share tools on how to present yourself in a memorable and impactful way. Enjoy food, drinks and networking with fellow WIB members and Women in Life Sciences (WILS) at UCSF. [Click here](#) for more information and to register.



### **Young Women In Bio at Genomic Health Inc.**

WIB and Genomic Health Inc. (GHI) in Redwood City, CA invites SF Bay area middle and high school girls for an afternoon discovering the fun and challenge of science careers. The event will be held on Thursday, March 28, 2013 from 4:30 p.m. to 7:30 p.m. PST. It includes female speakers from GHI, a lab tour, a hands-on science exercise and an informal discussion with women working in science. The discussions and activities will be followed by a pizza dinner. [Click here](#) to register and for more information.

## **Chicago Chapter Events**

### **CEO Conversations: A Joint Discussion Between Women In Bio and Springboard Enterprises**

Join WIB-Chicago on March 21, 2013 from 8:30 a.m. - 10:00 a.m. CST at McDonnell Boehnen Hulbert & Berghoff LLP in Chicago for breakfast, networking, and to view an interview of Amy Millman, President of Springboard Enterprises. Ms. Millman was interviewed about the history of Springboard, what the organization offers current and potential women CEOs, and how Springboard and WIB goals are aligned. [Click here](#) for more information and to register.

### **Save the Date - WIB-Chicago Annual Book Club Details Coming Soon!**

Please join WIB-Chicago members and friends for a discussion of "Nice Girls Just Don't Get It: 99 Ways to Win the Respect You Deserve, the Success You've Earned, and the Life You Want" by Lois P. Frankel and Carol Frohlinger, on May 16, 5:30 p.m. CST at The Rhythm Room in Evanston. Bring a copy of the book and your ideas, and we'll facilitate the conversation. Stay tuned for registration details!

### **WIB-Chicago Clinical Trials Panel A Great Success!**

On February 19, 2013 over 90 people attended Women In Bio's esteemed panel "If Only I'd Known: Lessons Learned in Later Stage Clinical Trial" held at Astellas. Distinguished panelists from

pharmaceutical and device backgrounds shared lessons learned from the trenches on patient recruitment (including social media) and retention, pros and cons of outsourcing clinical trials, supporting promotion claims through publication data, and data analysis. It was a great event with lively question and answer period. WIB-Chicago thanks Acurian and Astellas Pharma US for sponsoring the program.



The panelists entertain questions from the attendees.

### **Young Women In Bio Committee Seeks Your Input**

YWIB is a special initiative of WIB designed to introduce school-age girls to careers in science, technology, engineering and math. WIB-Chicago's YWIB committee seeks your input on programming. Please take a few minutes to respond to a survey to help us design programs of interest to you: <http://www.surveymonkey.com/s/SDNXYWJ>.

### **VOLUNTEERS NEEDED!**

WIB-Chicago's sponsorship committee is looking for dynamic women with great ideas to join the committee. Email [Chicago@womeninbio.org](mailto:Chicago@womeninbio.org) for more information.

## **Greater Boston Chapter Events**

### **Build Even Stronger Relationships with Women In Bio by Volunteering with WIB-Greater Boston**

Do you want to deepen your involvement in the biotech industry in Boston? Then help us grow Women In Bio's Greater Boston chapter by creating and executing high value programs and networking events. We're looking for enthusiastic volunteers to participate in all aspects of our

chapter - from joining our committees to helping staff our events.

We have openings on our program, membership, sponsorship and communications committees, so whatever your interest, we have a place for you to get involved and contribute. If you are unsure of which committee you would like to join, don't worry! Each committee will share their roles in WIB and how you can help shape our networking and education programs going forward. If you'd like to participate in making it happen, please email us at [Boston@womeninbio.org](mailto:Boston@womeninbio.org).

## Atlanta Chapter Events

### Help Build the new WIB-Atlanta Chapter by Volunteering

WIB-Atlanta is looking for new volunteers to help us grow and develop our chapter. Increase your leadership skills and volunteer with one of our committees! Please email us at [Atlanta@womeninbio.org](mailto:Atlanta@womeninbio.org) and get involved today!

## Other Interests

### Girls 4 Science Women's History Month Reception

Join Girls 4 Science for an evening of networking and celebration of Women's History Month. The featured guest speaker is Erin Inman, Senior Vice President, Primera, Power Division Manager. The reception will take place on March 14, 2013 from 5:30 p.m. - 7:30 p.m. CST, at the Union League Club of Chicago (65 West Jackson, Chicago). Tickets are available for purchase at [www.girls4science.org](http://www.girls4science.org).



### WIB is partially funded by our National Sponsors



Women In Bio **Welcome**

February 28, 2013  
[www.WomenInBio.org](http://www.WomenInBio.org)