

WSPA Annual Meeting

Great Wolf Lodge | Centralia, WA

November 7th – 8th, 2025

The Washington State Pharmacy Association is accredited by the Accreditation Council for Pharmacy Education as a Provider of continuing pharmacy education.



Meeting Information:

Welcome to the WSPA Annual Meeting! Events such as these build our social connections, which in turn makes each of us more resilient to stress and burnout. Networking and connecting are powerful, and we have designed this meeting with longer breaks, interactive sessions and inspiring topics to rekindle your inner flames and build back your resilience. If you are a first time attendee, please reach out to the WSPA staff and board members to help you connect with peers and navigate the meeting. We are thrilled you are back meeting with us!

Annual Meeting Online CE Platform and Presentation Materials

The WSPA uses an online CE platform, Lecture Panda (LP) for the WSPA Annual Meeting. Meeting participants can use LP for each session to access full accreditation information, download and view presentation slides and handouts, claim CE credit, and evaluate sessions.

As always, your NABP# and date of birth is required for pharmacists and technicians to register and claim CE credit. Once you create your profile, you will receive an email from "LecturePanda". Please keep this email as this will be how you access your profile again. The email contains a link to view CE session objectives and full accreditation information, upload CE credit and download presentation materials. Presentation slides and handouts can be accessed through the "Materials" section in LP. Use this tab to download and print presentations before the meeting. Printed handouts or presentations will not be provided at the meeting. Also, the CE sessions will have Wi-Fi available so you may bring a laptop, phone or tablet to log your CEs and take notes.

CE Requirement – Secret Codes and Online Evaluation

In order to receive credit, participants must go into LP to submit the secret codes and evaluations for each CE activity attended. At the end of each CE presentation, participants will be provided with a secret code. Participants can document the code on the Activity Description and CE Tracking Form available at the registration desk. To receive credit for the activity, participants must follow the **LP Registration and Upload Instructions** provided on the website and at the meeting. WSPA staff will be available throughout the meeting to assist you with the CE upload. Participants will only have **60 days** from the activity date to upload CE credits in order to receive credit. The CE credit will then be uploaded to the CPE Monitor and attendance of CE can be tracked through that system. ***It is your responsibility to check the CPE Monitor within the 60 days' timeframe to confirm that all of your CEs have been uploaded.***

In order to process CE credits, participants must provide the correct NABP e-Profile ID number along with their birth month and day (MMDD format). The NABP e-Profile ID number is a six to eight-digit number, and it is NOT your license number, NPI number or store NABP#. If you need to verify your number or have not yet registered for one, please visit www.MyCPEMonitor.net.

Technician or Pharmacist Accredited CE

The CPE activities accredited for pharmacists will have a designation of "P" next to the ACPE number. CPE activities accredited for technicians will have a "T". For example, "ACPE # 0130-0000-25-001-L04-P&T" is accredited for both pharmacists and technicians. **The agenda at a glance will also have an ** next to the title that is only pharmacist accredited.**

How to Understand CE Subject Classification

ACPE # 0130-0000-25-001-L04-P&T; this ACPE number has L04 which means it's a live event and classified as pharmacy administration. A list of definitions is below:

L01 – Disease State/Drug Therapy
L02 – HIV/AIDS Therapy
L03 – Law Related to Pharmacy Practice

L04 – Pharmacy Administration
L05 – Patient Safety
L06 – Immunizations

L07 – Compounding
L08 – Pain Management/Opioid/SUD
L99 – Additional Topic Areas

Meeting Agenda

Speaker & Activity Descriptions

Friday, November 7th, 2025



****What's New in Urinary Tract Infections?**

8:30 AM – 10:00 AM | 1.5 hour CPE | Activity Type: Knowledge | Room: Salon D

ACPE UAN: 0130-0000-25-612-L01-P | Target Audience: Pharmacist & Student

Faculty: Jessica Zering, PharmD, BCIDP, BCPS, CAPM | Conflict of Interest: None

Dr. Jessica Zering is an antimicrobial stewardship pharmacist working for the Washington State Department of Health. She is board-certified in infectious diseases and pharmacotherapy and has worked in pharmacy in different roles and settings for over a decade. Her work at the Department of Health involves creating antibiotic usage guidance and educational resources for providers working in outpatient, acute care, and long-term care settings. She is passionate about protecting patients from the unwanted effects of antibiotics.

At the completion of this activity, the pharmacist will be able to:

- Describe the role and supporting evidence for 2 antibiotics newly approved for the treatment of urinary tract infections.
- Discuss new guidance addressing the role of urine polymerase chain reaction tests in the long-term care setting.
- List relevant updates from the new Infectious Diseases Society of America's complicated urinary tract infection guideline.

This session examines the roles and supporting evidence for 2 newly-approved PO antibiotics for UTI – gepotidacin and pivmecillinam. Additional topics covered include the Infectious Diseases Society of America's new guidelines for complicated urinary tract infections, as well as a molecular test that is being marketed to outpatient facilities. Brief updates on the Washington State Department of Health Antimicrobial Stewardship Team's activities will also be shared.



Plaque to the Future: 2025 Update of Lipid Guidelines & Therapeutics

8:30 AM – 10:00 AM | 1.5 hour CPE | Activity Type: Knowledge | Room: Salon E

ACPE UAN: 0130-0000-25-613-L01-P&T | Target Audience: Pharmacist, Technician, & Student

Faculty: Matthew Slagle, PharmD | Conflict of Interest: Stockholder with Pfizer, Gilead Sciences, & Crispr Therapeutics AG – All financial relationships have been mitigated

Matt is a born and raised Washingtonian, hailing from Republic, but now based in Wenatchee. He was inspired to become a pharmacist given his family's long history in the profession. He graduated from the University of Montana Skaggs School of Pharmacy in 2016 before completing his residency at Confluence Health Central Washington Hospital. Outside of Pharmacy, Matt is an avid trail runner, hiker, fly fisherman, and skier who enjoys spending time in the outdoors with his family.

At the completion of this activity, the pharmacist will be able to:

- Describe guideline recommendations which can be implemented into their pharmacy practice.
- Describe mechanisms of action for newer and future lipid lowering therapies.
- Describe cardiovascular benefits of various lipid lowering therapies.
- Explain the side effects of various lipid lowering therapies.

At the completion of this activity, the pharmacy technician will be able to:

- Review guideline recommendations that are used in pharmacy practice.
- Describe cardiovascular benefits of various lipid lowering therapies.
- Recognize the side effects of various lipid lowering therapies.

Get up to date on emerging lipid therapies and the most recent clinical recommendations to improve your practice.



Keynote | From Surviving to Thriving: The Compassionate Path to Fulfillment and Success in Pharmacy
A transformative strategy to combat the outs (checking out, burning out, getting out) and reconnect with your mental and physical wellbeing

10:20 AM – 11:50 AM | 1.5 hour CPE | Activity Type: Application | Room: Salon E & F
ACPE UAN: 0130-0000-25-614-L99-P&T | Target Audience: Pharmacist, Technician, & Student
Faculty: Skye McKennon, PharmD, BCPS, ACSM-GEI | Conflict of Interest: None

Dr. Skye McKennon, PharmD, BCPS, ACSM-GEI is a nationally recognized educator, pharmacist, and wellbeing ambassador dedicated to transforming healthcare through compassion. As Associate Professor and Thread Director of Pharmacology and Interprofessional Education at Washington State University's Elson S. Floyd

College of Medicine, she leads innovative curriculum design that integrates wellbeing, emotional resilience, and team-based care. Dr. McKennon is a certified Mindful Self-Compassion teacher, trained by co-founder Christopher Germer, and co-author of the first scoping review on wellbeing interventions for rural healthcare professionals and trainees. With over a decade of experience and a passion for empowering healthcare professionals, she has delivered impactful presentations to regional, national, and international audiences, equipping them with evidence-based tools to thrive personally and professionally.

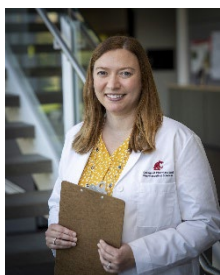
At the completion of this activity, the pharmacist and pharmacy technician will be able to:

- Define self-compassion.
- Explain the relevance of self-compassion to pharmacy professionals, including how it differs from self-indulgence and self-pity.
- Describe the evidence-based benefits of self-compassion on emotional regulation, resilience, and overall wellbeing, particularly in high-stress healthcare environments.
- Identify and challenge common misconceptions about self-compassion that may hinder its practice among healthcare professionals.
- Apply practical self-compassion strategies that can be used in daily life to reduce burnout, enhance fulfillment, and improve professional performance.

Compassion is at the heart of healthcare—pharmacy professionals dedicate their lives to caring for patients, colleagues, communities, and loved ones. But what if you included yourself in the circle of compassion? This dynamic and engaging keynote explores how self-compassion—a teachable, evidence-based skill—can be a powerful catalyst for personal and professional fulfillment. Grounded in rigorous research, this session reveals how self-compassion enhances emotional regulation, resilience, and life satisfaction, while reducing stress, burnout, anxiety, and shame. We will explore common misgivings about self-compassion and discover how it strengthens rather than weakens, promotes health over self-indulgence, and enhances motivation while enabling you to care more effectively for others. Through interactive experiences and practical tools, attendees will learn how to integrate self-compassion into daily life—anytime, anywhere. This keynote offers a transformative path forward for pharmacy professionals facing the “outs” (checking out, burning out, getting out), empowering them to nurture themselves, rediscover meaning in their work, and thrive in both life and practice.

2025 Immunization Updates

1:30 PM - 2:30 PM | 1 hour CPE | Activity Type: Knowledge | Room: Salon D
ACPE UAN: 0130-0000-25-615-L06-P&T | Target Audience: Pharmacist, Technician, & Student
Faculty: Kimberly McKeirnan, PharmD, BCACP | Conflict of Interest: Grant Funding from Merck & CSL Seqirus / Royalties from American Pharmacists Association & WSU / Investigator & Owner of PharmVRI – All financial relationships have been mitigated



Kimberly C. McKeirnan is a Professor of Pharmacotherapy and Director of the Center for Pharmacy Practice Research at the Washington State University. She is also a PhD student at Nelson Mandela University studying the pharmacist's role in immunization administration in Africa. Dr. McKeirnan is passionate about research involving pharmacy practice and public health.

At the completion of this activity, the pharmacist will be able to:

- Discuss recent changes to the composition of the Advisory Committee on Immunization Practices (ACIP).
- Describe the recent vaccine updates from the Advisory Committee on Immunization Practices (ACIP).
- Indicate how ACIP recommendations may impact pharmacy practice.

At the completion of this activity, the pharmacy technician will be able to:

- Discuss recent changes to the composition of the Advisory Committee on Immunization Practices (ACIP).
- Describe the recent vaccine updates from the Advisory Committee on Immunization Practices (ACIP).
- Discuss how ACIP recommendations may impact pharmacy practice.

Immunizations are a cornerstone of community pharmacy practice for pharmacists and technicians. This session will include a review of recent changes and recommendations from the Advisory Committee on Immunization Practices.



Inflation Reduction Act Updates

1:30 PM - 2:30 PM | 1 hour CPE | Activity Type: Knowledge | Room: Salon E

ACPE UAN: 0130-0000-25-616-L03-P&T | Target Audience: Pharmacist, Technician, & Student

Faculty: Lisa Nelson, PharmD, 340B ACE | Conflict of Interest: None

Lisa Nelson is the Chief Pharmacy Officer at Unity Care Northwest in Bellingham, WA. She received her Doctor of Pharmacy from Washington State University in Pullman/Spokane, WA where she also earned her Bachelor of Science in Biology. After graduating, Dr. Nelson began practicing in community pharmacy before finding her calling in community health. Dr. Nelson is an active member of the National Association of Community Health Centers serving as co-chair of NACHC's 340B Workgroup, a member of NACHC's Pharmacy Policy & Operations Subcommittee, Clinical Practice, Legislative, and Health Policy Committees; a 340B Apexus Certified Expert (ACE), serves as a member of Apexus 340B FQHC Council and peer faculty for Apexus 340B University; 2024 NACHC Grassroots Advocacy award recipient; Community Voices for 340B 2024 340B Defender of the Year; and president of Washington State Pharmacy Association. In her free time, she enjoys reading and spending time with her family enjoying all the scenery and activity the Pacific Northwest has to offer.

At the completion of this activity, the pharmacist and pharmacy technician will be able to:

- Describe how pharmacies will access the Maximum Fair Price for drugs subject to negotiation.
- Discuss the role of the Medicare Transaction Facilitator in implementing the Inflation Reduction Act Medicare Drug Price Negotiation program.
- Explain why pharmacy enrollment in the Medicare Transaction Facilitator and the potential operational and financial impacts of non-enrollment.

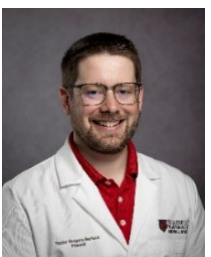
The Inflation Reduction Act (IRA) marks a historic shift in Medicare drug pricing policy, with far-reaching implications for pharmacies, patients, and the healthcare system. This session will provide a comprehensive overview of the IRA's drug pricing provisions, focusing on the Medicare Drug Price Negotiation Program and its rollout. Attendees will gain insight into key components of the IRA related to drug pricing and negotiation, the drugs selected for negotiation in 2026 and 2027, how the Maximum Fair Price (MFP) will be implemented and its impact on pharmacy operations, and the role of the Medicare Transaction Facilitator (MTF) and how to enroll.

Why Didn't They See That Coming? Coaching Situational Awareness in Learners

1:30 PM - 2:30 PM | 1 hour CPE | Activity Type: Application | Room: Salon F

ACPE UAN: 0130-0000-25-617-L99-P&T | Target Audience: Pharmacist, Technician, & Student

Faculty: Taylor Bertsch, PharmD & Rachel Allen, PharmD, BCACP | Conflict of Interest: None



Taylor Bertsch is a Scholarly Associate Professor at Washington State University College of Pharmacy and Pharmaceutical Sciences, where he also serves as an Experiential Services Faculty Liaison. He earned his Doctor of Pharmacy degree from WSU and completed an academic fellowship focused on teaching. His research and scholarship focus on pharmacy technician training, immunization delivery, and innovations in pharmacy education.

Rachel Allen is a pharmacist and Associate Teaching Professor at the University of Washington School of Pharmacy. Rachel has 10 years of experience in Experiential Education and is Assistant Dean for Professional Affairs and Practice.



At the completion of this activity, the pharmacist and pharmacy technician will be able to:

- Define situation monitoring and explain its relevance to pharmacy learners in clinical practice.
- Identify key indicators that signal a breakdown in situational awareness among learners at different stages of development.
- Analyze a sample scenario to identify missed cues and gaps in situational awareness.
- Apply targeted coaching strategies to support a learner in improving their situational monitoring skills.

Missed cues can lead to major consequences. Help your learners see what they're missing. This session empowers preceptors to recognize situational awareness gaps, coach effectively based on learner level, and support meaningful development in the skills of situational monitoring.



Utilizing Data for Clinical Decisions & Program Interventions

2:45 PM - 3:45 PM | 1 hour CPE | Activity Type: Application | Room: Salon D

ACPE UAN: 0130-0000-25-618-L99-P&T | Target Audience: Pharmacist, Technician, & Student

Faculty: JT Lew, PharmD, BCPS | Conflict of Interest: Bayer – Research Grant – All conflicts of interest have been mitigated

JT Lew has been a Managed Care Pharmacist with the MultiCare Health System in Washington State since 2021. In this role, he collaborates with payors, who have risk-based agreements with the health system, on drug utilization management, clinical program, and other managed care-related opportunities to improve the value of care the shared patient populations receive. Prior to joining MultiCare, he completed the PGY1 Managed Care Residency Program at Kaiser Permanente Washington and graduated from the University of Washington School of Pharmacy in 2020.

At the completion of this activity, the pharmacist and pharmacy technician will be able to:

- Apply Excel tools and functions to build, manage, and visualize datasets.
- Analyze collected data to identify trends.
- Examine data-driven population-level interventions for improved outcomes.
- Evaluate the application of publicly available resources to support exploring an opportunity for a target patient population.

Ever have a great idea, but wonder where to start using data to investigate in the ambulatory setting? You've come to the right place! In Excel Applications for Pharmacists, we will walk through ways to turn your observations into evidence-based proposals.

Educating Pharmacy Professionals for Rural Communities in Washington

2:45 PM - 3:45 PM | 1 hour CPE | Activity Type: Knowledge | Room: Salon E

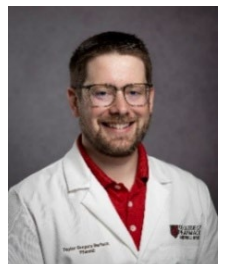
ACPE UAN: 0130-0000-25-619-L99-P&T | Target Audience: Pharmacist, Technician, & Student

Faculty: Angela Stewart, PharmD, BCPS, FWSPA & Taylor Bertsch, PharmD | Conflict of Interest: None



Dr. Stewart received her BS in Pharmacy from the University of Washington and PharmD from the University of Texas. She completed a general residency at St. Joseph Hospital in Tacoma, WA and a specialty residency in Internal Medicine at the UTHSCSA and Bexar County Hospital in San Antonio, TX. She has more than 20 years of experience leading clinical pharmacy services, patient care, and directing a pharmacy residency program. Dr. Stewart joined the WSU College of Pharmacy & Pharmaceutical Sciences in 2013 and is a Professor in the Department of Pharmacotherapy. She directs the Yakima extension program and serves as Associate Dean for Rural Health.

Taylor Bertsch is a Scholarly Associate Professor at Washington State University College of Pharmacy and Pharmaceutical Sciences, where he also serves as an Experiential Services Faculty Liaison. He earned his Doctor of Pharmacy degree from WSU and completed an academic fellowship focused on teaching. His research and scholarship focus on pharmacy technician training, immunization delivery, and innovations in pharmacy education.



At the completion of this activity, the pharmacist will be able to:

- Recognize the role of pharmacists in improving access to primary care in rural communities.
- Describe the objectives, strategies, and outcomes of the WSU CPPS Rural Health Initiative.
- Discuss the benefits and challenges of providing rural clinical rotations for student pharmacists.
- Identify strategies for creating an impactful rural clinical learning experience.

At the completion of this activity, the pharmacy technician will be able to:

- Recognize the role of technicians in improving access to primary care in rural communities.
- Describe the objectives, strategies, and outcomes of the WSU CPPS Rural Health Initiative.
- Identify strategies for creating an impactful rural clinical learning experience.

Pharmacist-provided services are vital to bridge the gaps in access to primary care, especially in our rural communities. This session will provide details on how the WSU College of Pharmacy and Pharmaceutical Sciences' Rural Health Initiative is impacting access to pharmacy care through education and training of future rural pharmacists. Presenters will share strategies that preceptors can implement to overcome common barriers to preferencing rural learning experiences and to develop learning experiences that inspire students and residents to choose a future in rural pharmacy practice.

Community Pharmacy Academy Networking Session

Equipping Patients to Lock Up Opioids: Washington's Pharmacy Safe Storage Program

2:45 PM - 3:45 PM | 1 hour CPE | Activity Type: Knowledge | Room: Salon F

ACPE UAN: 0130-0000-25-620-L08-P&T | Target Audience: Pharmacist, Technician, & Student

Faculty: Esther Brown & Julie Hanna, PharmD | Conflict of Interest: None



Julie is a dedicated, passionate, and trusted community pharmacist. She earned her Doctor of Pharmacy degree from the University of Washington in 2013. She has spent her entire pharmacy career at Fred Meyer, working her way up the ranks from a pharmacy assistant to her current position as pharmacy manager. Julie is committed to building lasting and trusting relationships with her patients while promoting safe medication management and optimal health care for the community she serves.

Esther manages and has worked deeply on various social impact campaigns and equity-centered communication programs at DH, driving positive change in communities across Washington. She has experience combining marketing and prevention strategies for the Health Care Authority's opioid misuse prevention campaign, developing research-based strategies to create effective behavior change. Esther is committed to building healthier and more inclusive communities, leveraging social change to create meaningful and long-term impact, especially in communities that have been historically underserved.



At the completion of this activity, the pharmacist will be able to:

- Describe behavior change in science and how pharmacists can employ behavior change strategies to encourage safe medication storage.
- Restate three key prevention conversations pharmacists can integrate into their workflow to educate patients about responsible opioid use.

At the completion of this activity, the pharmacy technician will be able to:

- Describe behavior change in science and how pharmacy technicians can employ behavior change strategies to encourage safe medication storage.
- Restate three key prevention conversations pharmacy technicians can integrate into their workflow to educate patients about responsible opioid use.

Nearly half of people misusing pain relievers, including prescription opioids, get the from a friend or family member. Locking up medication is a simple, effective way to prevent misuse, and pharmacists are uniquely positioned to lead the way in promoting safe storage and responsible use. In this session, you'll learn how the Washington State Health Care Authority's Pharmacy Safe Storage Program – part of the Starts with One opioid misuse prevention campaign – partners with pharmacies statewide to provide free medication locking bags and equip teams with resources for impactful patient conversations. Participants will see

data demonstrating the program's success and community impact, hear testimonials from peers who have implemented these approaches, and explore practical strategies grounded in behavior change science that can be integrated into everyday workflow.

Student Academy Networking Session

4:00 PM – 5:00 PM | 1 hour | Room: Fallen Timbers | [No CE Offered](#)

Faculty: James Abend, Sr. Liaison Student Director, WSU PharmD Candidate & Heather Kleven, Jr. Liaison Student Director, WSU PharmD Candidate & Dakota Fletcher, Sr. Liaison Student Director, UW PharmD Candidate & Danika Woo, Jr. Liaison Student Director, UW PharmD Candidate

Join the Student Academy Session to network with your peers and discover the world beyond traditional pharmacy roles. Our student representatives have curated a lineup of guest speakers to shed light on unique pharmacy opportunities. Don't miss out on expanding your horizons and forging new connections!

Saturday, November 8th, 2025



The Neurodiverse Universe

8:30 AM – 9:30 AM | 1 hour CPE | Activity Type: Application | Room: Salon D

ACPE UAN: 0130-0000-25-621-L99-P&T | Target Audience: Pharmacist, Technician, & Student

Faculty: Cris DuVall, PharmD, SUDP, FWSPA | Conflict of Interest: None

Dr. DuVall received her BA in Communication Disorders from Eastern Washington University, an MS in Education of the Hearing Impaired from Idaho State University and her PharmD from Washington State University. She completed a residency at Central Washington Hospital in Wenatchee, pursued a clinical research fellowship in geriatrics with Washington State University in Spokane, and obtained credentialing as a Substance Use Disorder Professional (SUDP) - the first pharmacist to do so in Washington State. A resident of Washington, she has served as the Director of Continuing Professional Development for the Washington State Pharmacy Association (WSPA), Pharmacist Supervisor of the Washington State Penitentiary pharmacy in Walla Walla, Chemical Dependency Professional for Cowlitz Family Health Center in Kelso, Clinical Pharmacist Counselor at Choice Wellness Centers in Vancouver, WA plus Clinical Pharmacist at Island Drug on Whidbey Island. She works currently as a Clinical Pharmacist at Ray's Pharmacy on Orcas Island and Case Manager for the Recovery Navigator Program with Compass Health for the San Juan Islands.

At the completion of this activity, the pharmacist and pharmacy technician will be able to:

- Define neurodiversity.
- Discuss conditions often associated with neurodivergence.
- Apply at least three practical strategies to promote inclusive environments that support and celebrate patients with variations in human brain development and function.

Neurodiversity encompasses a wide range of neurological and developmental variations, including Autism Spectrum Disorder (ASD), Attention Deficit Hyperactivity Disorder (ADHD), dyslexia, and more. In this session we will explore measures that advocate acceptance, accommodation, and the creation of inclusive environments that support and celebrate neurodivergent patients.



Washington Recovery & Monitoring Program Updates

8:30 AM – 9:30 AM | 1 hour CPE | Activity Type: Knowledge | Room: Salon E

ACPE UAN: 0130-0000-25-622-L08-P&T | Target Audience: Pharmacist, Technician, & Student

Faculty: William Rhodes, MSW, SUDP, SWAIC | Conflict of Interest: None

William Rhodes is the Program Manager for the Washington Recovery Assistance Program for Pharmacy. He is responsible for the day-to-day management of the WRAPP program. Primary duties include providing resources and referrals for WRAPP participants with substance abuse detoxification, assessment, and

treatment. Additionally, William oversees Participant Monitoring/Compliance, coordination with Department of Health reporting, UA monitoring, Employment Resources, guest speaking and Community Outreach.

At the completion of this activity, the pharmacist and pharmacy technician will be able to:

- Discuss the function of and need for WRAPP.
- Explain what Substance Use Disorder (SUD) is and the risk factors associated with SUDs.
- Review both the legal and ethical responsibility regarding suspected drug diversion and impairment.
- Identify the role for individuals and actions needed to promote awareness of WRAPP.

WRAPP assists Pharmacy Professionals with Substance Use Disorder and Drug diversion in the workplace. WRAPP assistance most often occurs to support a substance use disorder and assists Pharmacy Professionals with assessment, treatment, monitoring and compliance. From workplace monitoring and testing to in-home testing, WRAPP uses current technology to promote health and safety for Pharmacy Professionals in the workplace, since 1983.

Health-Systems & Ambulatory Care Networking Session

IRA's Impact on 340B & Academy Updates

8:30 AM – 9:30 AM | 1 hour CPE | Activity Type: Application | Room: Salon F

ACPE UAN: 0130-0000-25-623-L03-P&T | Target Audience: Pharmacist, Technician, & Student

Moderator: Lisa Nelson, PharmD, 340B ACE | Conflict of Interest: None

Faculty: Jeannette Quimby, PharmD & Michael Wong, PharmD, MHA, BCPS & Stanley Tan, PharmD | Conflict of Interest: None



Jeannette Quimby, PharmD, is a Clinical Pharmacist with MultiCare's Primary Care Clinic in Gig Harbor, where she leads innovative ambulatory care services that advance patient-centered pharmacy practice. A proud graduate of the University of Washington School of Pharmacy, she completed her PGY-1 residency at Tacoma General Hospital and has since become a passionate advocate for expanding pharmacist-led care. Jeannette's leadership and vision earned her recognition as the Distinguished Young Pharmacist of the Year, and she is honored to be elected to serve on the Washington State Pharmacy Association Board of Directors, where she will continue to champion collaboration, innovation, and the future of the profession.

Michael Wong is currently the Inpatient Pharmacy Operations Manager at UWMC Montlake. He moved to Washington after finishing pharmacy school in California. After finishing the UW HSPAL residency in 2020, he became the operation manager at UWMC Northwest campus and moved into his current role. He is also currently the advisor for the UW ASHP Student Chapter and working with the amazing student leaders to promote health systems pharmacy.



Stan is a seasoned pharmacist with a decade of experience at UW Medicine, where he excels in identifying and resolving inefficiencies within pharmacy operations. His daily routine is characterized by a proactive approach to problem-solving, consistently leading to innovative and impactful solutions. Among his notable accomplishments are the implementation of a system-wide inventory management system, a significant overhaul of the enterprise's digital presence, and the automation of numerous routine tasks. Stan's professional journey is marked by a steadfast dedication to enhancing healthcare delivery through strategic advancements and technological integration.

At the completion of this activity, the pharmacist and pharmacy technician will be able to:

- List out relevant updates to WSPA members from the Ambulatory Care Academy and Health Systems Academy.
- Discuss the impacts of 340B changes to pharmacy practice.
- Review the impacts of the Inflation Reduction Act within the health-systems and clinic-based settings.
- Discover technological changes in promoting efficiency in pharmacy practice.

This session will be for all WSPA members practicing in Ambulatory Care and in the Health Systems. We will have topics to discuss including 340B and the Inflation Reduction Act. The academy chairs will also provide updates from the academy.

General Session: Current Issues in Pharmacy Practice

9:45 AM – 11:15 AM | 1.5 hour CPE | Activity Type: Knowledge | Room: Salon B & C

ACPE UAN: 0130-0000-25-624-L04-P&T | Target Audience: Pharmacist, Technician, & Student

Faculty: Lisa Nelson, PharmD, 340B ACE & Jenny Arnold, PharmD, BCPS | Conflict of Interest: None



Dr. Jenny Arnold is the CEO of the Washington State Pharmacy Association, where she has worked since 2009. Jenny received her Doctor of Pharmacy Degree from the University of Washington School of Pharmacy in 2006 and completed her Pharmacy Practice Residency the next year at Swedish Medical Center in Seattle, WA. Dr. Arnold works to advance the practice of pharmacy in Washington through advocacy, education, and connections between the profession. She has worked with local, state, and national organizations to increase pharmacist reimbursement for patient care as billing providers. She is particularly passionate about pharmacist provided patient care to improve outcomes, public health, and immunizations. Dr. Arnold is a Board-Certified Pharmacotherapy Specialist and is a Clinical Assistant Professor with the University of Washington School of Pharmacy and a Clinical Affiliate with Washington State University College of Pharmacy and Pharmaceutical Sciences.

Lisa Nelson is the Chief Pharmacy Officer at Unity Care Northwest in Bellingham, WA. She received her Doctor of Pharmacy from Washington State University in Pullman/Spokane, WA where she also earned her Bachelor of Science in Biology. After graduating, Dr. Nelson began practicing in community pharmacy before finding her calling in community health. Dr. Nelson is an active member of the National Association of Community Health Centers serving as co-chair of NACHC's 340B Workgroup, a member of NACHC's Pharmacy Policy & Operations Subcommittee, Clinical Practice, Legislative, and Health Policy Committees; a 340B Apexus Certified Expert (ACE), serves as a member of Apexus 340B FQHC Council and peer faculty for Apexus 340B University; 2024 NACHC Grassroots Advocacy award recipient; Community Voices for 340B 2024 340B Defender of the Year; and president of Washington State Pharmacy Association. In her free time, she enjoys reading and spending time with her family enjoying all the scenery and activity the Pacific Northwest has to offer.



At the completion of this activity, the pharmacist and pharmacy technician will be able to:

- Discuss WSPA's state legislative priorities for the upcoming session.
- Identify regulatory issues pertaining to pharmacy practice in Washington State.
- Describe current trends in pharmacy practice.
- Describe the successes, challenges and priorities of the Washington State Pharmacy Association.

This session serves as an advocacy and membership update annually for the Washington State Pharmacy Association. Member prioritized initiatives are discussed and the leadership of WSPA seeks active feedback from WSPA members on pressing issues for the pharmacy professions. The WSPA President also gives their final address during this important session. Members are encouraged to voice their opinions and hear those of others in this interactive session.



****Updates in Infectious Diseases: New Antibiotics and New Approaches with Old Antibiotics**

11:30 AM – 12:30 PM | 1 hour CPE | Activity Type: Knowledge | Room: Salon D

ACPE UAN: 0130-0000-25-625-L01-P | Target Audience: Pharmacist & Student

Faculty: Zahra Escobar, PharmD | Conflict of Interest: None

Zahra Kassamali Escobar is a clinical pharmacist at the University of Washington and Fred Hutchinson Cancer Center in Seattle Washington and serves as Co-Medical Director at the Center for Stewardship in Medicine. She completed her PharmD at the University of California San Francisco, a pharmacy practice residency at the VA in Tucson, Arizona; and an infectious diseases fellowship at the University of Illinois in Chicago. Over the last 10 years she has practiced in inpatient and outpatient settings in academic, community, and rural health institutions. Zahra has a strong interest in fostering data-driven, innovative approaches that not only improve patient care but also strengthen professional networks and local communities.

At the completion of this activity, the pharmacist will be able to:

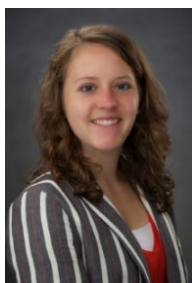
- Identify 3 new antibiotics available on the US market since 2024.
- List clinical similarities and differences between ceftazidime/avibactam and ceftolozane/tazobactam.

- Discuss the use of long-acting injectable antibiotics in the management of *S. aureus* bacteremia.
- Identify key updates from the 2025 American Thoracic Society clinical practice guideline for community acquired pneumonia.

This session will review the latest updates in infectious disease management, from newly approved antimicrobials to novel data with the older antimicrobial agents. We'll cap it off with a review of the American Thoracic Society's updated July 2025 guidelines on the diagnosis and treatment of community-acquired pneumonia.

World of Insulin Pumps

11:30 AM – 12:30 PM | 1 hour CPE | Activity Type: Knowledge | Room: Salon E
 ACPE UAN: 0130-0000-25-626-L01-P&T | Target Audience: Pharmacist, Technician, & Student
 Faculty: KyAnn Wisse, PharmD, BCACP & Nancy Lee, PharmD, BCPS, CDCES | Conflict of Interest: None



Dr. Wisse is a clinical pharmacy practitioner at Swedish Medical Group at the West Seattle primary care and internal medicine clinics. A graduate of the University of Michigan School of Pharmacy, she has been practicing at Swedish for over 10 years. Her areas of interest include diabetes, hypertension, cardiology, and polypharmacy, as well as teaching – with frequent precepting of both students and residents. Outside of work she's cheering for the Wolverines or enjoying the PNW mountains.



Nancy graduated from UW School of Pharmacy in 2004 and completed two pharmacy residencies and a 2-year fellowship. She's been at Swedish for 10+ years and provides direct patient care in the Issaquah primary care clinic. She is also a preceptor for pharmacy residents and students.

At the completion of this activity, the pharmacist will be able to:

- Identify the range of available insulin pumps.
- Explain the key features and technologies.
- Discuss patient selection and suitability.
- Review practical considerations, training needs, and billing opportunities.

At the completion of this activity, the pharmacy technician will be able to:

- Identify the range of available insulin pumps.
- Explain the key features and technologies.
- Review practical considerations, training needs, and billing opportunities.

Insulin pumps are no longer just for type 1 diabetes. With advancing technology and growing evidence, they're becoming an important option for people with type 2 diabetes seeking greater flexibility and precision in their care. This session will explore the latest pumps available in the U.S., review supporting clinical data, and discuss patient selection and real-world considerations. Attendees will walk away with practical strategies to optimize therapy and improve outcomes for patients with type 2 diabetes.

Technician Association Networking Session

The Dual Role: Expanding Pharmacy Technician Careers by Bridging Clinical Care and Community Needs

11:30 AM – 12:30 PM | 1 hour CPE | Activity Type: Knowledge | Room: Salon F
 ACPE UAN: 0130-0000-25-627-L99-P&T | Target Audience: Pharmacist, Technician, & Student
 Moderators: Carrie Stephens, CPhT & Wyatt True | Conflict of Interest: None
 Faculty: Edgar Lopez-Baez, CHW Specialist | Conflict of Interest: None



Wyatt is a Pharmacy Billing Coordinator at Fred Hutchinson Cancer Center in Seattle, WA. My focus leans towards operational support, financial wellbeing, and general compliance. I am very interested in how data can be leveraged to provide new insights into business and guide future decisions. I also serve as co-chair of the Washington State Pharmacy Technician Association, working to build support and outreach opportunities for pharmacy technicians in Washington State. When not working I like to engage in outdoor activities with my dog Niku or tinker and listen to music.

Carrie began working at Hoagland Pharmacy in 2004 in billing. She completed the Hoagland Pharmacy Technician on the job training program in 2016 and became a Pharmacy Technician January of 2017. January 1, 2019, Carrie became one of the owners of Hoagland Pharmacy and has taken an active role in advocacy for Pharmacy at the State and National Level. She has been on the Hi-School Pharmacy Advisory Board since its inception in 2019 and serves as the only Pharmacy Technician on the Board along with five Pharmacists. Carrie has been vocal in advocating for Pharmacy Technicians where her goal is advocating for Technician's to practice at the top of their license.



Edgar has been a lifelong advocate for whole-person care and has worked to develop linguistic and cultural curriculums that address inequities in the social determinants of health and subsequent health disparities in the Latino and other underserved communities. He has extensive experience working closely with community-based organizations, government entities, and educational institutions with a focus on establishing/developing and optimizing quality and culturally informed health and social services for historically and currently underserved members of the community.

At the completion of this activity, the pharmacist and pharmacy technician will be able to:

- Discuss the latest WA State Pharmacy Technician Association initiatives in professional and workforce development.
- Define the core responsibilities and competencies of a Community Health Worker.
- Identify at least three common Social Determinants of Health (SDOH) – such as housing insecurity, food access, or transportation and their direct impact on patient adherence to chronic disease management.

Pharmacy technicians are the core operational engine of the pharmacy, and their role is rapidly expanding into direct patient care support. This session highlights the growing importance of the pharmacy technician cross-trained as a Community Health Worker (CHW). We will explore CHW competencies—including social service navigation, resource referral, and patient advocacy—not only expands the technician's professional scope but also delivers measurable health equity within the community. Our guest speaker, a CHW specialist, will share how this dual role helps technicians connect patients to vital resources (like housing and food assistance), transforming the pharmacy into a critical access point for addressing Social Determinants of Health (SDoH) on top of receiving their medication needs.



Chronic Kidney Disease in Primary Care

2:15 PM – 3:15 PM | 1 hour CPE | Activity Type: Knowledge | Room: Salon D

ACPE UAN: 0130-0000-25-628-L01-P&T | Target Audience: Pharmacist & Student

Faculty: Celena Wilson, PharmD | Conflict of Interest: None

Celena is currently a second-year ambulatory care pharmacy resident at Providence St Peter Family Medicine. She earned her Bachelor of Science in Biochemistry from Western Washington University in Bellingham, WA, then her Doctor of Pharmacy from Washington State University in Spokane WA. She completed her first year of residency at Providence St Peter Hospital with a focus in ambulatory care. Her clinical interests include diabetes management, interprofessional communication, and health literacy.

At the completion of this activity, the pharmacist will be able to:

- Identify risk factors and signs/symptoms of Chronic Kidney Disease (CKD).
- Recognize how co-morbidities contribute to CKD and how pharmacists can help manage them.
- Describe ways pharmacists can be involved in screening, prevention, risk mitigation, and complication management of CKD.

At the completion of this activity, the pharmacy technician will be able to:

- Identify risk factors and signs/symptoms of Chronic Kidney Disease (CKD).
- Recognize how co-morbidities contribute to CKD.

Chronic Kidney Disease (CKD) is a silent epidemic, often undiagnosed until advanced stages, yet it profoundly impacts patient health, medication safety, and overall quality of life. We will review patients who are at high risk with underlying co-morbidities like diabetes and hypertension—and recognize the subtle signs and symptoms of declining kidney function. This session will highlight how pharmacists are well-positioned to help with screening, prevention, and management of CKD patients.



AI in Health Equity

2:15 PM – 3:15 PM | 1 hour CPE | Activity Type: Application | Room: Salon E
 ACPE UAN: 0130-0000-25-629-L99-P&T | Target Audience: Pharmacist, Technician, & Student
 Faculty: Joshua Villarreal, PharmD | Conflict of Interest: None

Joshua Villarreal received his PharmD degree from the University of Arizona, a Master’s in Public Administration degree from the University of Washington and completed his PGY1 Residency at the Hospital of the University of Pennsylvania and has pursued a variety of interests in pharmacy practice including ambulatory care, administrative and community care as a Tribal Medicine specialist with the Muckleshoot Indian Tribe, and critical care as an emergency medicine pharmacist at the University of Washington Medical Center. Joshua is currently in a combined role with the University of Washington Medicine’s Department of Pharmacy and the School of Pharmacy as Lead Clinical Educator to coordinate the efforts of pharmacy preceptors and faculty in developing our future pharmacists and exploring the resources they will require for tomorrow's health care environment.

At the completion of this activity, the pharmacist and pharmacy technician will be able to:

- Identify equitable practices maximizing the use of artificial intelligence in health care.
- Demonstrate the risk of bias found within artificial intelligence platforms.
- Use critical thinking to recognize risk of inequity in the use of AI.

Artificial Intelligence is a powerful resource in healthcare including pharmacy practice. This session will focus on the use of AI as a tool, while demonstrating the risks of bias found within these platforms. Learners will go through some critical thinking cases to recognize the inherent inequities and develop equitable practices to ensure all patients benefit from technological advancement.



Independent Academy Networking Session

Independent Pharmacy Practice & Regulatory Updates

2:15 PM – 3:15 PM | 1 hour CPE | Activity Type: Knowledge | Room: Salon F
 ACPE UAN: 0130-0000-25-630-L03-P&T | Target Audience: Pharmacist, Technician, & Student
 Faculty: Jacqueline Eide, PharmD | Conflict of Interest: None

Jacqueline Eide is the owner and pharmacist of Goldendale Pharmacy, in Goldendale, Washington, and Horizon Pharmacy in Wapato, Washington, an affiliate of Cascadia Pharmacy Group. She is the current chair of Washington State Pharmacy Association Independent Practice Academy. She is passionate about independent community pharmacy and its role especially in rural communities. She has partnered with the local county health department to address care gaps for patients with mental illness and implemented minor medical care and OTC prescribing in the pharmacy to help reduce the need for ER visits.

At the completion of this activity, the pharmacist and pharmacy technician will be able to:

- Discuss specific issues and needs pertaining to Independent Pharmacy Practice.
- Define state and federal legislative/regulatory issues pertaining to pharmacy.

This CE activity is designed to support independent pharmacy owners with discussion and tools to support them. We will discuss opportunities to expand clinical services in community practice, error reporting systems, employee and personal wellbeing, and adopting medical billing software into practice. Participants should bring their experiences and questions to this interactive session.

Pharmacy Quality Assurance: Building Trust Through Standards

3:30 PM – 4:30 PM | 1 hour CPE | Activity Type: Knowledge | Room: Salon B & C

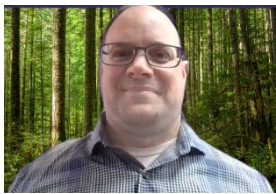
ACPE UAN: 0130-0000-25-631-L04-P&T | Target Audience: Pharmacist, Technician, & Student

Faculty: Marlee O'Neill, JD, Executive Director of Washington State PQAC, Lindsay Trant-Sinclair, MPP, Deputy Director of Washington State PQAC & Scott Craig, Pharmacist Inspector of Washington State PQAC | Conflict of Interest: None



Marlee has been the Executive Director for the Washington State Pharmacy Quality Assurance Commission since 2022. She previously served as the Deputy Director for the Office of Investigative and Legal Services at the Department of Health where she assisted the Commission with its disciplinary matters. Prior to joining DOH, she worked at the Attorney General's Office litigating disciplinary cases for various health care professions. Marlee earned her bachelor's degree from the University of Washington and her law degree from Seattle University. Marlee enjoys using her law degree to assist the Commission in promoting public health and the pharmacy profession. In her free time, Marlee enjoys attending and watching sporting events with her family.

Lindsay has been the Deputy Director for the Washington State Pharmacy Quality Assurance Commission since 2021. She previously served as the commission's Rules and Legislative. Before coming to the commission, she worked as a community organizer at a nonprofit organization and as a nonpartisan staffer in both the Oregon and Washington state legislatures giving her an in-depth look at the state policy process. She earned her undergraduate degree in Sociology (BA) at Willamette University and her Master of Public Policy degree (MPP) from Oregon State University.



Scott Craig has been a Pharmacist Inspector with the Washington State Pharmacy Commission for a little over three years. Prior to this, Scott worked fifteen years as a Certified Nuclear Pharmacist with experience in sterile compounding and pharmaceutical manufacturing. During those fifteen years, he took on roles as a pharmacy manager, quality safety officer, and was directly involved with external audits by multiple governing organizations including the FDA, DOH, DOT, and CMO partners. When not working for the State, Scott enjoys hiking, camping, and traveling with his family and friends.

At the completion of this activity, the pharmacist & pharmacy technician will be able to:

- Discuss the commission and staff makeup and how to engage with both.
- Identify new and updated areas of practice regulation and trending topics.
- Discuss the disciplinary process for pharmacy personnel.

Stay updated with pharmacy regulations and get your questions answered. Join an interactive session with the Pharmacy Quality Assurance Commission staff. This session will cover recent law and rule changes, ongoing rulemaking projects, and the inspection process. Learn how to prioritize patient safety while complying with pharmacy law and effectively engage with the commission.